







Axis Video Servers and Network Decoder

	1-port Video Servers			4-port Video Servers		
	AXIS 250S MPEG-2 Video Server	AXIS 241S Video Server	AXIS 241SA Video Server	AXIS 240Q Video Server	AXIS 241Q Video Server	AXIS 241QA Video Server
Product Portfolio Video Servers						
Video compression	MPEG-2	Motion JPEG MPEG-4	Motion JPEG MPEG-4	Motion JPEG	Motion JPEG MPEG-4	Motion JPEG MPEG-4
Max video resolution (pixels)	720x480 (NTSC) 720x576 (PAL)	704x480 (NTSC) 768x576 (PAL)	704x480 (NTSC) 768x576 (PAL)	704x480 (NTSC) 768x576 (PAL)	704x480 (NTSC) 768x576 (PAL)	704x480 (NTSC) 768x576 (PAL)
Frames per second per channel (NTSC/PAL)	<i>MPEG-2</i> 30/25 (4CIF)	<i>Motion JPEG</i> 30/25 (4CIF) <i>MPEG-4</i> 30/25 (2CIF)	<i>Motion JPEG</i> 30/25 (4CIF) <i>MPEG-4</i> 30/25 (2CIF)	<i>Motion JPEG</i> 6/5 (all resolutions) using all 4 channels	<i>Motion JPEG</i> 30/25 (CIF) using all 4 channels 30/25 (4CIF) using 1 channel <i>MPEG-4</i> 20/17 (CIF) using all 4 channels 30/25 (2CIF) using 1 channel	<i>Motion JPEG</i> 30/25 (CIF) using all 4 channels 30/25 (4CIF) using 1 channel <i>MPEG-4</i> 20/17 (CIF) using all 4 channels 30/25 (2CIF) using 1 channel
Video source	1 BNC composite or Y/C video input NTSC/ PAL Auto sensing	1 BNC composite or Y/C video input ¹⁾ NTSC/PAL Auto sensing	1 BNC composite or Y/C video input ¹⁾ NTSC/PAL Auto sensing	4 BNC composite input NTSC/PAL Auto sensing	4 BNC composite input NTSC/PAL Auto sensing	4 BNC composite input NTSC/PAL Auto sensing
Audio support	Simplex stereo		Full duplex			Full duplex
Alarm inputs/outputs	4/1	4/4	4/4	4/4	4/4	4/4
Motion detection		✓	✓	✓	✓	✓
Pan/Tilt/Zoom support	✓	✓	✓	✓	✓	✓
Security	Multi-level password IP address filtering	Multi-level password IP address filtering HTTPS	Multi-level password IP address filtering HTTPS	Multi-level password IP address filtering HTTPS	Multi-level password IP address filtering HTTPS	Multi-level password IP address filtering HTTPS
Ethernet networks	10/100BaseT	10/100BaseT	10/100BaseT	10/100BaseT	10/100BaseT	10/100BaseT
Serial connectors	RS-232, RS-485/422	RS-232, RS-485/422	RS-232, RS-485/422	RS-232, RS-485/422	RS-232, RS-485/422	RS-232, RS-485/422
Available in blade version	✓	✓		✓	✓	

1) Y/C video requires converter cable

For large installations

AXIS Video Rack Solution



AXIS Rack Solution combines the AXIS Video Server Rack, a 19" 3U rack mountable chassis (including built-in replaceable power supply) with up to 12 interchangeable and hot-swappable Blades. Supports AXIS 240Q, AXIS 241Q, AXIS 241S, AXIS 250S

Network Decoder

AXIS 292 Network Video Decoder



One channel audio and video decoder

Offers analog video and audio from any AXIS Motion JPEG or MPEG-2 based network camera or video server



Axis Software and Accessories

Axis Network Cameras



Smart, progressive video solutions that you can trust

Axis currently offers a broad range of network video solutions for a large number of applications, of which the most prominent are systems for security, remote surveillance and broadcasting. It is Axis' goal to enable complete solutions for IP-Surveillance installations, so you will find Network Cameras, Video Servers, Software and accessories are all included in our product range.

A complete range of video solutions

- For new video installations as well as for expanding and/or migrating existing analog installations to network video
- For indoor and outdoor, wired and wireless environments
- With advanced functions such as motion detection, alarm inputs/ outputs, power over Ethernet, and e-mail support
- With integrated web servers, image compressors and operating systems, so images can be viewed from standard Web browsers anywhere on the network, or even anywhere in the world if the Internet is used.

For a complete list of Axis video software and products, please visit www.axis.com/products/

Video management software

AXIS Camera Explorer



AXIS Camera Explorer software enables live viewing and short-term manual recording of video, directly in Microsoft Windows Explorer, as well as viewing on PDA's running MS Pocket PC

AXIS Camera Recorder



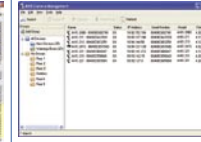
AXIS Camera Recorder software offers basic video recording and monitoring functionality for up to 16 video sources
Records continuously, on schedule, on alarm or when motion is detected

AXIS Camera Station



AXIS Camera Station software offers advanced video recording, monitoring and search functionality
Scalable to 25 video sources, the software offers recording continuously, on schedule, on alarm or when motion is detected
Remote viewing of video via web interface as well as remote viewing and administration from a PC client
Additional AXIS Image Enhancer component improves image quality in poor visibility conditions such as fog, smoke, rain and snow
4 or 10 camera base license, 5 camera add-on license and 1 camera add-on license

AXIS Camera Management



AXIS Camera Management offers powerful and efficient installation and management capabilities
Locates multiple Axis video products automatically on the local network using standard network protocols
Sets the IP addresses, shows connection status and manages firmware upgrades of multiple Axis video products sequentially or in parallel

Compatible with all Motion JPEG Axis cameras and video servers. AXIS Camera Station is also capable of MPEG-2 and MPEG-4 viewing with Axis video products

More software applications available via partners:
www.axis.com/adp_cd

Accessories

AXIS 2490 Serial Server



Access to serial devices over 10/100 Mbit Ethernet networks.
Equipped with 2 x RS232 and 1 x RS485/422 ports.

Power-over-LAN Midspans and Splitter



Provide power to fixed network cameras and video servers over existing Ethernet or Fast Ethernet infrastructure using standard Category 5 cabling
Midspans available in 1, 6 and 12 port versions and compatible with IEEE 802.3af
Splitters available in 12 V and 18 V DC versions. 18 V version compatible with IEEE 802.3af

Note: Not available for all Axis products.