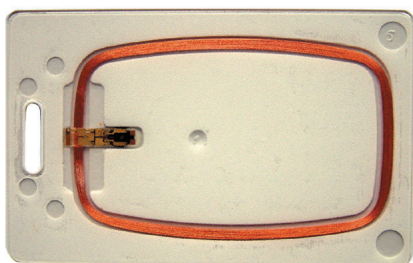




BOSCH
Invented for life

ACD-PROX II Cards 50/each



- ▶ Plastic card, PVC
- ▶ Dimensions: 86 mm x 54 mm x 1.9 mm
- ▶ Imprinted card number
- ▶ Slot Punch
- ▶ PROX II chip

Contactless credential with PROX chip

Functions

- PROX II cards are credentials that have an embedded antenna and PROX II chip.
- The card is recognized and read when held in front of the reader.
- The reading process is passive with frequency of 125 kHz.
- PROX II cards are static credentials with a unique chip number and a customer (or facility) number.

Installation/Configuration Notes

Contactless credentials with PROX II chip are ideal for installations with high-availability systems and where credentials may be exposed to abnormal conditions.

Reading ranges reach up to 12.5 cm depending on the readers used.

Technical Specifications

PROX II ISO card	
Dimensions	85.7 x 54 x 1.9 mm
Coding	Chip number, customer (or facility) code
Transmission frequency	125 kHz
Data preservation	10 years
Transaction times	< 100 ms

Ordering Information

ACD-PROX II Cards 50/each

Packing information: 50 cards/ each unit

ACD-PROXCARDII

Americas:
Bosch Security Systems, Inc.
130 Perinton Parkway
Fairport, New York, 14450, USA
Phone: +1 800 289 0096
Fax: +1 585 223 9180
security.sales@us.bosch.com
www.boschsecurity.us

Europe, Middle East, Africa:
Bosch Security Systems B.V.
P.O. Box 80002
5600 JB Eindhoven, The Netherlands
Phone: + 31 40 2577 284
Fax: +31 40 2577 330
emea.securitysystems@bosch.com
www.boschsecurity.com

Asia-Pacific:
Robert Bosch (SEA) Pte Ltd, Security Systems
11 Bishan Street 21
Singapore 573943
Phone: +65 6258 5511
Fax: +65 6571 2698
apr.securitysystems@bosch.com
www.boschsecurity.com

Represented by