

User manual

Installation and Configuration

PViewMobile



Copyright © Dallmeier electronic GmbH & Co.KG

All rights reserved. This document may not be copied, photocopied, reproduced, translated, transferred to an electronic medium or converted to a machine-readable form either whole or in part without first receiving written permission from Dallmeier electronic GmbH & Co.KG.

We reserve the right to make technical modifications.

The manufacturer accepts no liability for damage to property or pecuniary damages arising due to minor defects of the product or documentation, e.g. print or spelling errors, and for those not caused by intention or gross negligence of the manufacturer.

Dallmeier electronic GmbH & Co.KG
Cranachweg 1
D 93051 Regensburg

www.dallmeier-electronic.com
info@dallmeier-electronic.com

Table of contents

1	Introduction	5
1.1	Validity	5
1.2	Conventions	5
1.3	System requirements	6
1.4	Installation	6
1.5	Starting for the first time	7
2	Principles	9
2.1	User interface	9
2.2	Set language	10
2.3	Change password	11
2.4	Info dialog	11
3	Configuration	13
3.1	Recorder	13
3.1.1	Camera control	13
3.1.2	Relays	14
3.2	Edit recorder	15
3.3	Delete recorder	16
3.4	Recorder list	16
3.4.1	Export recorder list	16
3.4.2	Import recorder list	17
3.5	Video preferences	18
3.6	Video configuration	19
4	Recorder connection	21
4.1	Requirements on the recorder	21
4.2	Establish recorder connection	21
4.2.1	Check the connection	22
4.2.2	Multiple connections	23
4.3	Change the recorder connection	23
4.4	Disconnect recorder connection	23
5	Live connection	25
5.1	Sequencer mode	25
5.2	Live mode	26
5.2.1	Camera activation with dialog	26
5.2.2	Camera activation with fast switchover	27
5.3	Camera control	27
5.4	Camera control presets	28
5.4.1	Save preset	28
5.4.2	Edit preset	30
5.4.3	Use preset	30
5.5	Relay control	30
5.6	Multiple split view	31
5.7	Picture quality	33

5.8	Control with PDA keys	34
5.8.1	Fast switchover with PDA keys	35
5.8.2	Camera control with PDA keys	35
5.8.3	Split control with PDA keys	36
6	Track activation	37
6.1	Track mode	37
6.1.1	Activate track	37
6.1.2	Change track	38
6.2	Camera filter	38
6.3	Playback control	39
6.3.1	GUI playback control	39
6.3.2	PDA keys for playback control	40
6.4	Playback speed	40
6.5	Search by time	41
6.6	Exit track activation	42
7	Full picture view	43
7.1	Activate full picture display	43
7.2	Control in full picture view	44
7.2.1	Select function	44
7.2.2	Fast switchover	45
7.2.3	Camera control	45
7.2.4	Multiple split view	45
7.3	Exit full picture view	46
8	Exit program	47

1 Introduction

PViewMobile allows a PDA (Personal Digital Assistant) to be connected to a Dallmeier electronic DMS/DLS series recorder.

After the connection has been established, live pictures can be viewed from the cameras connected to the recorder. The PDA can also be used to control a dome camera or to switch the relays on the recorder. It is also possible to view more than one camera using various splits.

If a recorder track has been connected, the normal features for controlling playback are available in addition to a camera filter.

The picture quality can be adjusted to the current bandwidth (WLAN, UMTS, GPRS) by adjusting the picture and bit rate.

1.1 Validity

This document applies to the **PViewMobile** software. It has been written on the basis of version 1.3.3.

1.2 Conventions

Various symbols and formats are used to maintain the clarity of the document.



IMPORTANT

The word **IMPORTANT** denotes information for preventing damage, incorrect configurations or incorrect actions.



NOTE

A **NOTE** offers information on principles, special features and efficient procedure as well as general recommendations.

Expression

Expressions in **bold** and *italics* generally indicate a control element on the device (switches or labels) or on its user interface (buttons, menu entries)

1.3 System requirements

The PDA must meet the following requirements.

CPU	Intel XScale (PXA255 or higher) or StrongARM 1110
Operating system	Windows Mobile 2003 SE or Windows Mobile 5.0
Display	240 x 320 or 480 x 640
Available RAM	At least 32 MB



NOTE

Devices with an Intel 2700G chip (additional graphics acceleration) will only be supported if they also have Windows Mobile 5.0.

1.4 Installation

To install PViewMobile the PDA must be connected to the PC on which the installation file PViewMobile_Installer.exe is saved.



NOTE

Refer to the documentation for the PDA. Ensure that **Microsoft ActiveSync** is installed and running.

-
- Run the installation file PViewMobile_Installer.exe.

The installation starts automatically.

- Follow the instructions in the installation dialogs.

After the installation has ended, confirmation may be required on the PDA.

1.5 Starting for the first time

PViewMobile is installed as standard in **Programs/PViewMobile/**.

- Go to the above folder.

- Start the file **PViewMobile.exe**.

The login dialog will be displayed.



Fig. 1-1

The first time you start the program you do not have to enter a password.

- Click on **OK** to log into the system.



IMPORTANT

If you do not enter a password PViewMobile will not be protected from abuse. Set a password immediately after you start the program for the first time.

2 Principles

2.1 User interface

After it has been started, the user interface will be displayed in its default status.

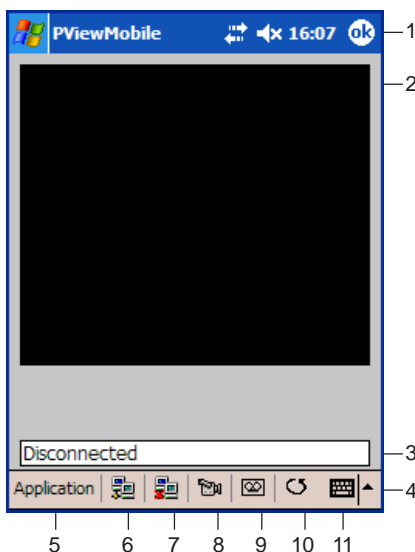
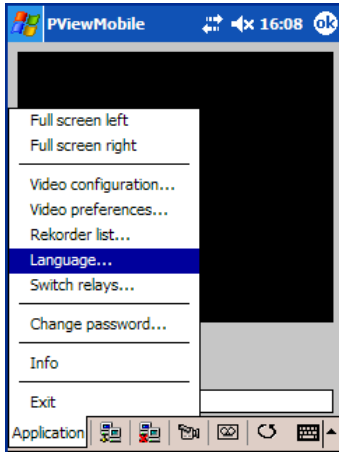


Fig. 2-1

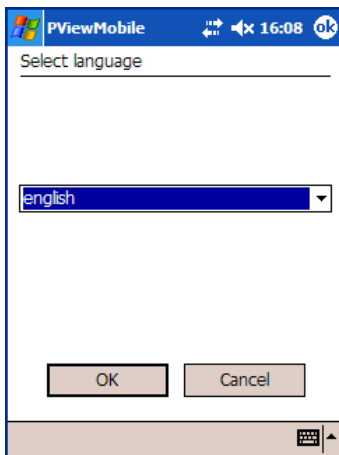
- 1 Windows task bar
- 2 Area for displaying the picture (split)
- 3 Status line
- 4 Menu and symbol bar
- 5 Main menu
- 6 Establishment of a recorder connection
- 7 Disconnection of a recorder connection
- 8 Activation of a camera (live)
- 9 Activation of a track
- 10 Activation of the sequencer
- 11 Display the virtual keyboard

2.2 Set language



- Open the **Select Language** dialog using **Application / Language...**

Fig. 2-2



- Select a language.
- Confirm by clicking on **OK**.

Fig. 2-3

2.3 Change password

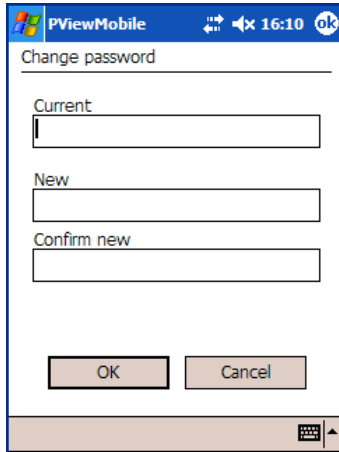


Fig. 2-4

- Open the **Change password** dialog using **Application / Change password....**

Current

- First enter the **Current** password.

New

- Enter the **New** password and confirm it by entering it a second time.

- Confirm by clicking on **OK**.

2.4 Info dialog

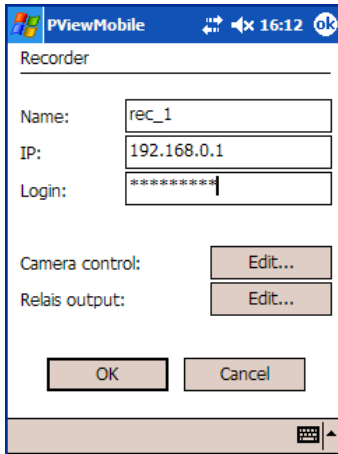
Information about the PViewMobile version can be called up using **Application / Info**.



Fig. 2-5

3 Configuration

3.1 Recorder



Recorder

Name:

IP:

Login:

Camera control:

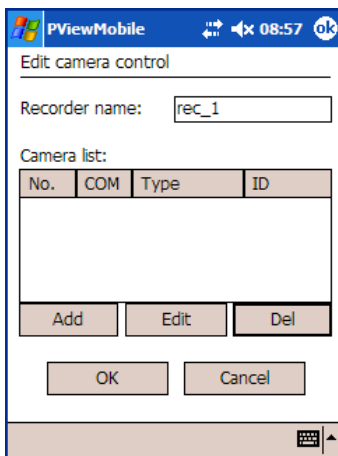
Relais output:

Fig. 3-01

- Open the **Recorder** dialog using **Application / Recorder list.../Add**.
- Enter the recorder **Name**, **IP** address and **Login** (recorder password).
- Confirm by clicking on **OK**.

3.1.1 Camera control

If a controllable PTZ camera is connected to the recorder, it may be configured for control by PViewMobile.



Edit camera control

Recorder name:

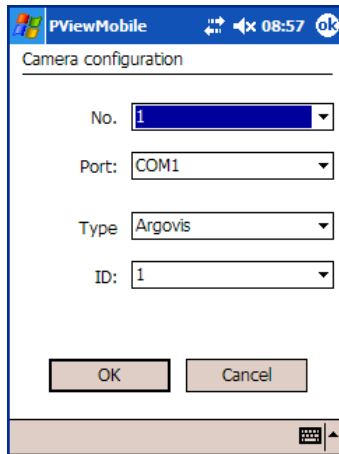
Camera list:

No.	COM	Type	ID
-----	-----	------	----

Fig. 3-02

- In the **Recorder** dialog click on **Edit...** next to **Camera control**.
- The **Edit camera control** dialog will be displayed.
- Click on the button **Add**.

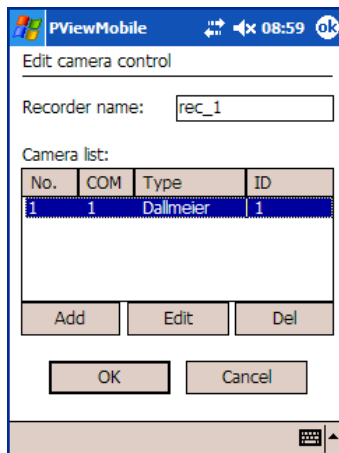
The **Camera configuration** dialog will be displayed.



- Select the camera **No.** (as defined on the recorder).
- Set the COM **Port** to which the camera is connected.
- Select the camera **Type** (or protocol).
- Select the camera **ID** if it has been defined (or default setting **1**).
- Confirm by clicking on **OK**.

Fig. 3-03

The defined PTZ cameras are displayed in the **Edit camera control** dialog.



- Confirm by clicking on **OK**.

The **Recorder** dialog will be displayed again.

Fig. 3-04

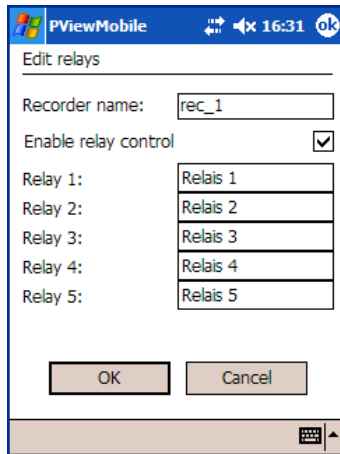
3.1.2 Relays

PViewMobile allows the five output relays on a DMS/DLS recorder to be controlled.

First of all the relays on the recorder must be configured accordingly. This is done on the recorder in the **Setup / Interfaces / Relay Out** dialog. Set **RemoteControl** for the **Function** of the relevant relay.

Proceed as follows to configure the relays in PViewMobile:

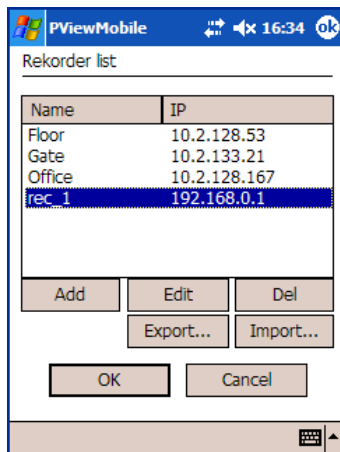
- In the **Recorder** dialog click on **Edit...** next to **Relais output**. The dialog **Edit relays** will be displayed.



- Activate the function by checking the **Enable relay control** checkbox.
- Enter a recognizable name for the relevant relay.
- Confirm by clicking on **OK**.

Fig. 3-05

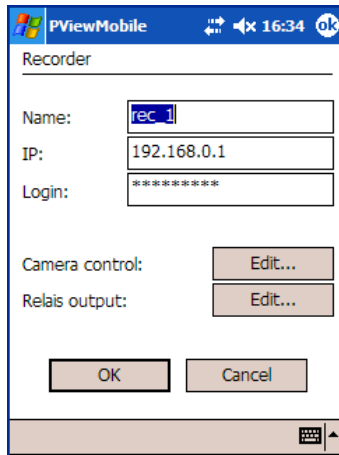
3.2 Edit recorder



- Open the **Recorder list** dialog using **Application / Recorder list ...**
- Mark a recorder.
- Click on **Edit** to edit the marked recorder.

Fig. 3-06

The dialog **Recorder** will be displayed.



➤ Make the required changes. Proceed as described in section 3.1.

➤ Confirm by clicking on **OK**.

Fig. 3-07

3.3 Delete recorder

- Open the **Recorder list** dialog using **Application / Recorder list ...**
- Mark a recorder.
- Click on **Del**.
- Confirm by clicking on **OK**.

3.4 Recorder list

PViewMobile provides a function to export and import the recorder list. In addition a recorder list exported from PView (version 5.6.0 or higher) can be imported.

3.4.1 Export recorder list

- Open the **Recorder list** dialog using **Application / Recorder list ...**
- Click on **Export...**

The dialog **Speichern unter** will be displayed.

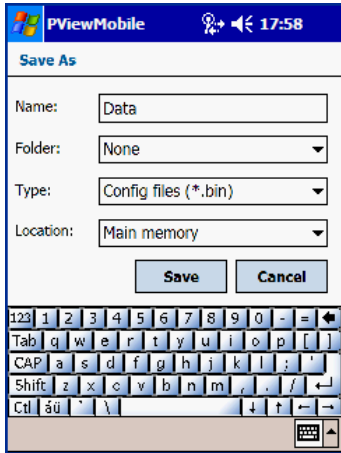


Fig. 3-08

- Enter a **Name** for the file.

The file will be saved as default to the **My documents** folder. Alternatively you can specify a sub-folder under **Folder** where you wish to save the file.

- Select **Config files (*.bin)** as the **Typ**.
- Select **Main memory** as the **Location**.
- Confirm by clicking on **OK**.

3.4.2 Import recorder list

First ensure that the recorder list exported from PViewMobile or PView is saved in the **My documents** folder.

- Open the **Recorder list** dialog using **Application / Recorder list**
- Click on **Import...**

The dialog **Open** will be displayed.

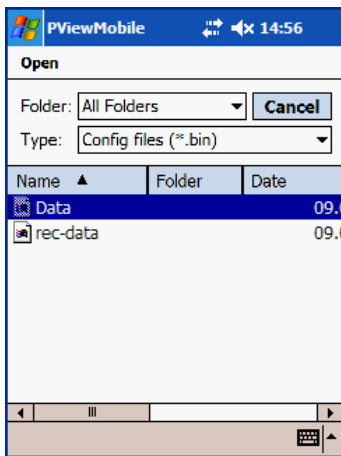


Fig. 3-09

- First decide whether the list of available *.bin files is formed using **All Folders** in the **My documents** folder or only using one specific sub-folder.
- Select **Config files (*.bin)** as the **Typ**.
- Double-click on the relevant file in the list of *.bin files.

The **Open** dialog will close automatically.

The **Recorder list** dialog will be shown with the imported recorder data.

- Confirm by clicking on **OK**.

3.5 Video preferences

The quality and number of pictures sent by the recorder can be preset for various bandwidths (WLAN, UMTS, GPRS). During a live connection it is possible to toggle between these preferences. This allows a perfect balance of picture quality and fluid display to be achieved in every case.

- Open the **Video preferences** dialog using **Application / Video preferences**

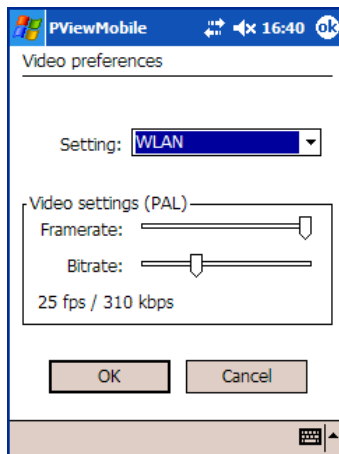


Fig. 3-10

- Select the relevant **Setting**.
- Set the **Framerate** (number of pictures per second) and the **Bitrate** (picture quality).
- Confirm by clicking on **OK**.

3.6 Video configuration

PViewMobile allows the picture display to be adjusted independently of the general display settings on the PDA.

- Open the **Video configuration** dialog using **Application / Video configuration**

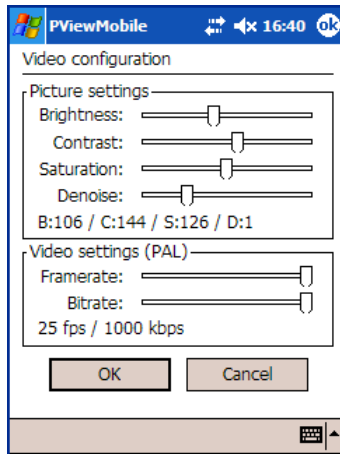


Fig. 3-11

The picture display can be changed in the **Picture settings**.

- Adjust **Brightness**, **Contrast** and **Saturation**.
- Adjust the 4-stage denoise filter using **Denoise**.
- Confirm by clicking on **OK**.

As part of the **Video settings (PAL)** it is possible to define a fourth preference (**Custom**) in the same way as in the **Video preferences**. Proceed as described above.

4 Recorder connection

4.1 Requirements on the recorder

In principle it must be ensured that the recorder can be contacted via the communication channel provided (WLAN, UMTS, GPRS). PViewMobile and a DMS/DLS recorder can be connected and can communicate with each other as from recorder software version 5.3.1. In addition **PRemote** and **PRemote PDA** must be enabled on the recorder.

4.2 Establish recorder connection

- Activate the LAN connection (WLAN) or the required WAN connection (GPRS or UMTS) on the PDA.
- Start PViewMobile.

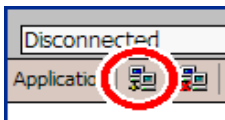
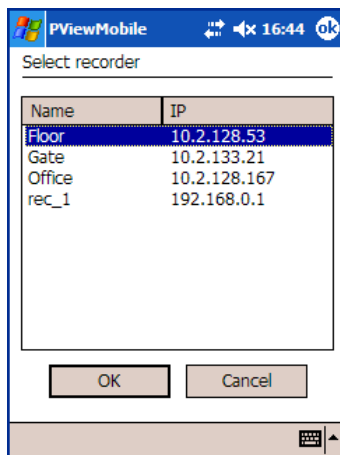


Fig. 4-01

- To establish the connection click on the button **Connect**.

PViewMobile always uses the current connection for this purpose (WLAN, GPRS or UMTS).



The dialog **Select recorder** will be displayed.

- Select a recorder and confirm by clicking on **OK**.

Fig. 4-02

After the connection has been established PViewMobile will immediately start to show live pictures from a camera connected to the recorder (as per the recorder configuration). The function buttons are displayed on the status bar.



Fig. 4-03

4.2.1 Check the connection

When the recorder connection has been established, PViewMobile will not check that the connection is maintained. Any error in the communication network (WLAN, UMTS, GPRS) will not be displayed by PViewMobile.




NOTE

A live picture or track playback may freeze without warning.

End PViewMobile. Check the connection. Re-establish the connection if necessary.

4.2.2 Multiple connections

Generally several PViewMobile clients can establish a connection to a DMS/DLS recorder at the same time. It must be noted, however, that only the client that connects first will be able to control the recorder. All the other clients are completely passive and only display the actions of the first client.

	<p>IMPORTANT</p> <p>If more than one PViewMobile client is connected to a DMS/DLS recorder, all the clients can monitor the actions of the client that connected first.</p>
---	--

4.3 Change the recorder connection

If a recorder connection has been established, it is possible to change to another recorder at any time in the main dialog. There is no need to disconnect the connection separately.

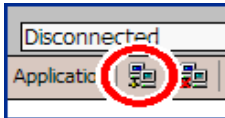


Fig. 4-04

- Click on the **Connect** button.
- Select a recorder.
- Confirm by clicking on **OK**.

4.4 Disconnect recorder connection

The connection to a recorder can be disconnected at any time in the main dialog. Click on the **Disconnect** button.

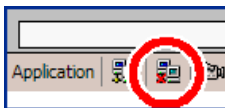



Fig. 4-05

The successful disconnection will be displayed by returning the user interface in its default status.

	<p>IMPORTANT</p> <p>The communication channel will not be closed when the recorder connection is disconnected. The WLAN, UMTS or GPRS network connection must be disconnected separately.</p>
---	--

5 Live connection

5.1 Sequencer mode

After a connection has been established, PViewMobile will be in sequencer mode. The live picture from a camera connected to the recorder will be displayed as specified in the recorder configuration. It is possible to change between various cameras automatically.



Fig. 5-01

Which camera picture is displayed depends on the display sequence set on the recorder and the current status of the sequencer.

- No picture (no camera in the display sequence)
- Picture from a certain camera permanently (only one camera in the display sequence or sequencer stopped)
- Pictures from various cameras alternately (several cameras in the display sequence, sequencer active)



NOTE

The required settings are made on the recorder in **Setup / System / Display / Monitor/ Sequencer**.

Sequencer mode is exited by connecting a certain camera (live) or a track (see below). Sequencer mode can be reactivated at any time by clicking on **Sequencer**.

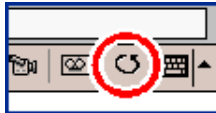


Fig. 5-02

5.2 Live mode

If a camera is activated in PViewMobile, the system will switch from sequencer mode to live mode. Two different methods may be used for the activation process.

5.2.1 Camera activation with dialog



Fig. 5-03

➤ Click on **Camera selection**.

The **Select camera** dialog will be displayed.

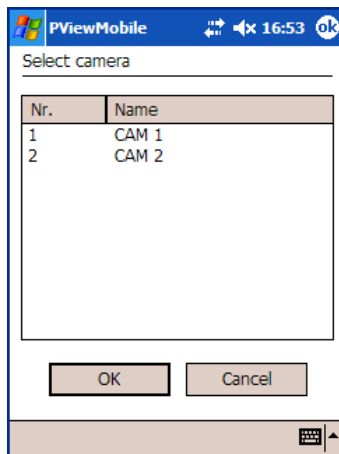


Fig. 5-04

- Select a camera.
- Confirm by clicking on **OK**.

The live picture from the camera will be displayed, regardless of the recorder's sequencer settings.

- To change the current camera, open the **Select camera** dialog again.
- Select the relevant camera and confirm by clicking on **OK**.

5.2.2 Camera activation with fast switchover

The function buttons for a live activation are also displayed in sequencer mode.

- Click on **Fast camera switchover**.



Fig. 5-05

The buttons to control the function will be displayed.

- Click on the buttons (right or left) to activate the next to previous camera on the camera list.

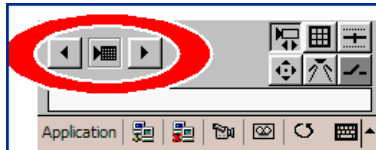


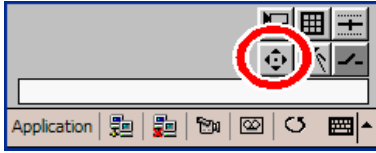
Fig. 5-06

PViewMobile will automatically switch to live mode. The live picture from the camera will be displayed, regardless of the recorder's sequencer settings.

- To change the current camera click again on the appropriate button (right or left).

5.3 Camera control

If a camera that is defined as controllable is activated, the camera control functions will be available.



➤ Click on the **Camera control** function button.

Fig. 5-07

The control elements for the **Camera control** function will be displayed.

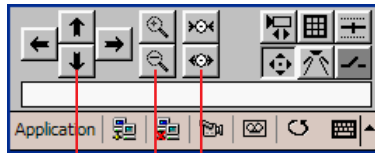


Fig. 5-08

- Click on the cursor buttons (A) to move the camera in the corresponding direction.
- Click on the magnifying glass buttons (B) to enlarge (+) or reduce (-) a picture section.
- Click on the focus buttons (C) to change the focus.

5.4 Camera control presets

If a PTZ camera is set to a certain position, this can be saved in PViewMobile. The cameras will automatically go to the saved positions (**presets**) when they are selected.

5.4.1 Save preset

There are 18 memories (0 – 17) to save the presets. These can be assigned their own names and used again at a later date.

- First direct the camera at the relevant position.
- Click on the button **Presets**.



Fig. 5-09

The control elements for the **Presets** function will be displayed.



Fig. 5-10

- Click on **Save preset** (diskette button).

The **Change camera presets** dialog will be displayed.

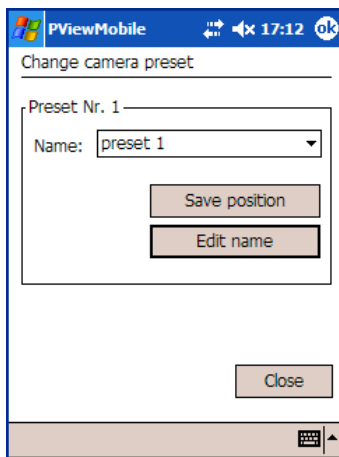


Fig. 5-11

- Select a memory position in the **Name** selection box.
- Click on **Save position** to save the current position of the PTZ camera.

5.4.2 Edit preset

To change a preset, direct the camera at the new position. Open the **Edit camera preset** dialog (diskette button). The new position can be saved to a memory position using the method described above.

To change the name of a preset, open the **Edit camera preset** menu (diskette button). Select the relevant preset in the **Name** selection box. By clicking on **Edit name** you can open the dialog to edit the name of the memory position (or preset).

5.4.3 Use preset

Saved presets can be used at any time if the corresponding PTZ camera is activated in live mode.

- Click on the button **Presets**.
- The control elements for the **Presets** function will be displayed.
- Select the required **Preset**.



Fig. 5-12

The PTZ camera automatically moves to the saved position.

5.5 Relay control

The output relays on a DMS/DLS recorder may be switched both in sequencer and in live mode. The requirement for this is that the relay control has been activated in the definition of the recorder and the recorder is configured accordingly.

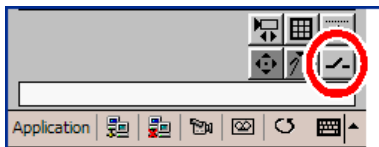


Fig. 5-13

- Click on the button **Relay**.

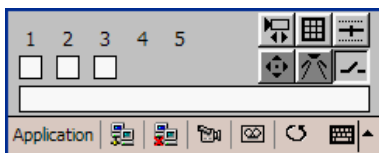


Fig. 5-14

- The control elements for the **Relay** function will be displayed.

Only those relays that are configured for „remote control“ on the recorder can be switched (using a checkbox). In the above examples they are relays 1-3.

A relay is switched by checking the appropriate checkbox.

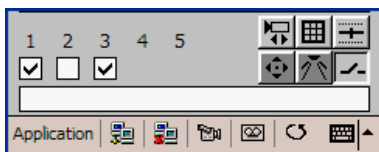


Fig. 5-15

- To cancel the relay switch, simply uncheck the checkbox.

5.6 Multiple split view

In live mode you can go to the **Multiple split** view. In this case the area for displaying the pictures is divided into several display areas (splits). A certain camera is activated in each split.

Which camera is displayed in which split depends on the configuration of the recorder.



NOTE

The required settings are made on the recorder in **Setup / System / Display / Splitter / (Live split)**.

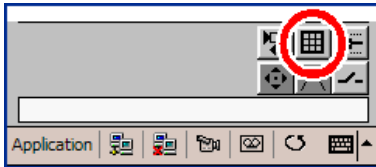


Fig. 5-16

➤ Click on the **Multiple split** button.

The control elements for the **Multiple split** function will be displayed.



Fig. 5-17

➤ Click a button to change the split view.



Fig. 5-18



Fig. 5-19

The **Single split**, **2x2** and **3x3** views are displayed in the normal view (with GUI). If you select the **4x4** and **5x5** views, the system will automatically change to full picture view.

There are several ways to exit the **Multiple split** view:



Fig. 5-20

Go to the **Single split** view.

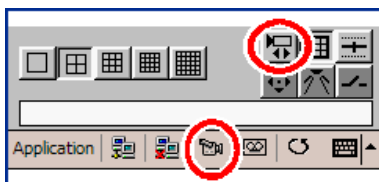


Fig. 5-21

Activate an individual camera.

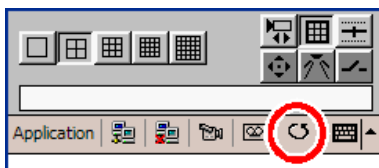



Fig. 5-22

Go to sequencer mode.

	<p>NOTE</p> <p>The Picture quality and Relay control functions are also available in the Multiple split view.</p>
---	---

5.7 Picture quality

You can toggle between the configured **Video preferences** at any time in live mode. This allows a perfect balance of picture quality and fluid display to be achieved in every case.

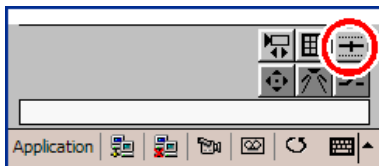


Fig. 5-23

➤ Click on the **Picture quality** button.



Fig. 5-24

The control elements for the **Picture quality** function will be displayed.

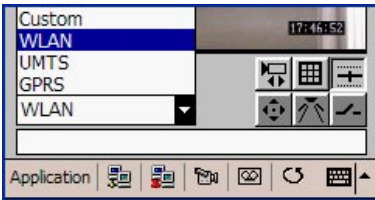


Fig. 5-25

➤ Select a preference for the (picture) **Quality**.

The appropriate settings relating to picture rate and bit rate will come into effect immediately. There is no need to restart PViewMobile.

5.8 Control with PDA keys

In live mode it is also possible to change between certain functions and their control using the keys on the PDA.

- Press the centre key of the PDA navigation keys to toggle between the available functions.



Fig. 5-26

The currently active function will be displayed by an icon in the split and by the automatic activation of the function buttons.



Fig. 5-27

5.8.1 Fast switchover with PDA keys



Fig. 5-28

Press the navigation keys to connect to the next or previous camera on the camera list.

5.8.2 Camera control with PDA keys

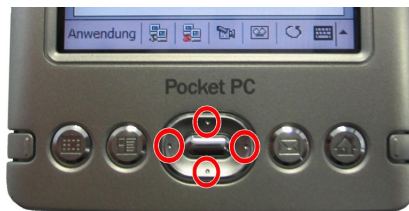


Fig. 5-29

➤ Press the navigation keys to control a camera.

5.8.3 Split control with PDA keys



Fig. 5-30

- Press the navigation keys to toggle between the various split views.

6 Track activation

The camera pictures on a DMS/DLS recorder are saved in defined tracks. These tracks can be activated and played back in PViewMobile.

6.1 Track mode

Before a track can be activated, PViewMobile must be connected to the appropriate recorder.

6.1.1 Activate track

- Establish the required recorder connection.
- Click the button Track selection.

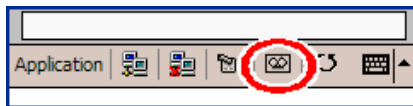


Fig. 6-01

The **Select track** dialog will be displayed.

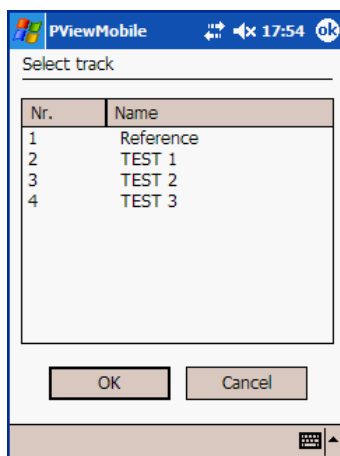


Fig. 6-02

- Select a track.
- Confirm by clicking on **OK**.

PViewMobile will automatically switch to track mode. The last picture saved in the track will be displayed.



Fig. 6-03

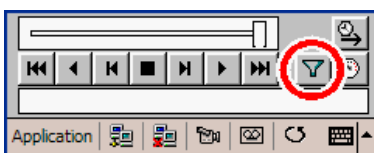
6.1.2 Change track

Several tracks are usually defined on a DMS/DLS recorder. If you wish to activate a different recorder track, open the **Select track** dialog again.

- Select a track.
- Confirm by clicking on **OK**.

6.2 Camera filter

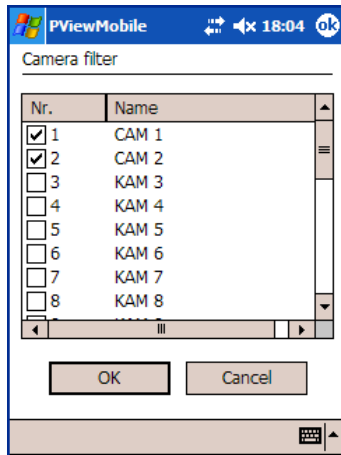
A DMS/DLS recorder can save the pictures from several cameras in a single track (in serial form depending on recording time). Therefore the pictures from various cameras are displayed alternately in normal playback. The so-called camera filter can be used to prevent this effect.



- Click on the **Camera filter** button (before or during playback).

Fig. 6-04

The **Camera filter** dialog will be displayed.



➤ Select the cameras relevant for the evaluation or playback by checking the appropriate checkbox(s).

➤ Confirm by clicking on **OK**.

If the playback continues, the pictures from the selected cameras will be displayed only.

Fig. 6-05

6.3 Playback control

6.3.1 GUI playback control

When a track has been activated, the following control buttons for playback will be available.

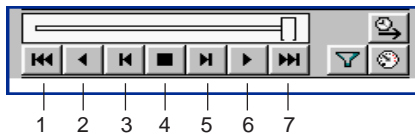


Fig. 6-06

- 1 Go to start of track
- 2 Playback backwards
- 3 One picture back
- 4 Stop
- 5 One picture forward
- 6 Playback forwards
- 7 Go to end of track

A slider is displayed above the buttons to control the playback. This shows the current position in the track. It also allows easy navigation in the track by means of drag & drop.

6.3.2 PDA keys for playback control

The playback can also be controlled using the PDA keys.

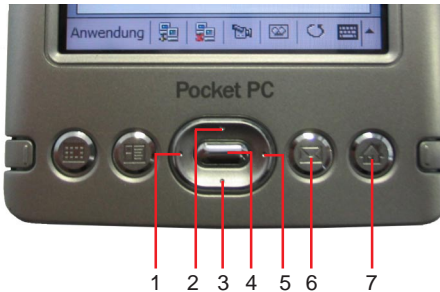


Fig. 6-07

- 1 Playback backwards
- 2 One picture forward
- 3 One picture back
- 4 Stop
- 5 Playback forwards
- 6 Go to start of track
- 7 Go to end of track

6.4 Playback speed

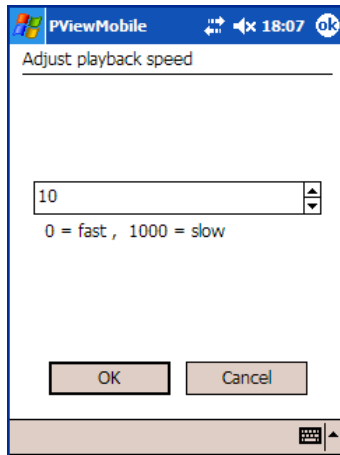
The speed of the track playback (forwards and backwards) can be adjusted before and during playback.

Click on the **Playback speed** button.



Fig. 6-08

The **Adjust playback speed** dialog will be displayed.



- Set a suitable value.
- Confirm by clicking on **OK**.

Fig. 6-09

6.5 Search by time

The **Search by time** function allows you to find a specific point in a track.



- Click on the **Search by time** button.

Fig. 6-10

The **Search by date and time** dialog will be displayed.

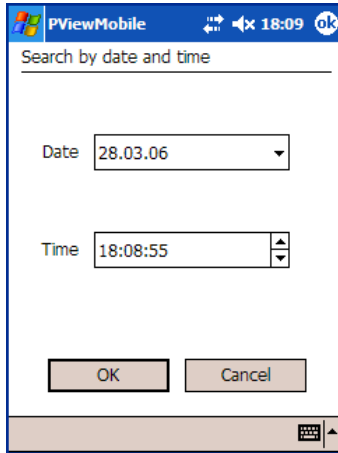


Fig. 6-11

➤ Set the relevant **Date** and/or **Time**.

➤ Confirm by clicking on **OK**.

The **Search by date and time** dialog will be closed. The corresponding picture will be displayed automatically.

If you select a time that is not included in the track, the playback will go to the nearest possible time (in other words the start or end of the track).

6.6 Exit track activation

To exit track mode, switch to live or sequencer mode.

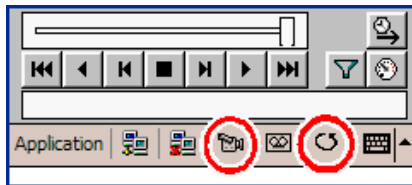


Fig. 6-12

7 Full picture view

PViewMobile makes it possible to expand the area of the picture display (split) to the size of the full display (full picture).

7.1 Activate full picture display

- To activate the full picture display click on **Application / Full screen left** (or **right**).

left or **right** refers to the alignment of the picture display to the navigation keys on the PDA. For the following pictures it has been assumed that the user is controlling the unit with his right hand. Therefore the **Full screen right** menu point has been selected.



Fig. 7-01

PViewMobile saves the alignment selected here. It is valid even if the user switches to full picture view by the second method. All that is required for this in normal view is to **click into the split**.

7.2 Control in full picture view

As in normal view, certain functions can be controlled using the PDA navigation keys in full picture view.

If a function has been selected in normal view, it will initially still be active after you switch to full picture view. The active function can be changed in full picture view.

7.2.1 Select function



- Press the centre key of the PDA navigation keys to toggle between the available functions.

Fig. 7-02

The current function is displayed by an icon in the full picture.



Fast switchover



Multiple split view

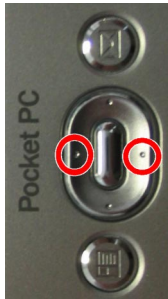


Camera control



Exit full picture view

7.2.2 Fast switchover



- Press the navigation keys to connect to the next or previous camera on the camera list.

Fig. 7-03

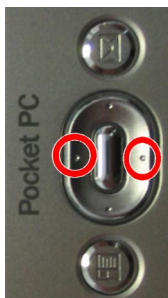
7.2.3 Camera control



- Press the navigation keys to control a camera.

Fig. 7-04

7.2.4 Multiple split view



- Press the navigation keys to toggle between the various split views.

Fig. 7-05

In a multiple split view it is possible to click in a single split. This will then be displayed as a full picture. If no other function is selected, you can then return to the multiple split view by clicking again.

7.3 Exit full picture view

To return to normal view, select the appropriate function. Then click once in the picture display area.

8 Exit program

PViewMobile can be exited using **Application / Exit**

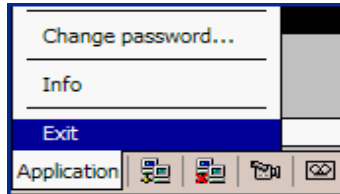


Fig. 8-01

or using the **OK** button in the Windows title bar.

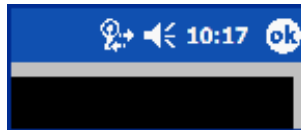


Fig. 8-02

In contrast to most Windows Mobile applications, PViewMobile is actually exited and not simply moved to the background.



IMPORTANT

The communication channel is not closed when you exit PViewMobile. The WLAN, UMTS or GPRS network connection must be disconnected separately.