

DVR Reader User's Manual

Version 1.0.1
May 20, 2004

Before installing and using this unit, please read this manual carefully. Please make sure to keep it handy for later reference.

Table of Content

1 UNDERSTAND DVR READER	1
1.1 Package Content.....	1
1.2 Front Panel	1
1.3 Back Panel	1
1.4 Minimum System Requirements	2
1.5 Specifications	2
2 SETUP DVR READER	3
2.1 Install DVR Reader software	3
2.2 Connect DVR Reader to PC.....	3
2.3 Insert HDD carrier to DVR Reader	3
2.4 Remove HDD carrier from DVR Reader.....	4
3 USING DVR READER SOFTWARE	5
3.1 Start DVR Reader Software.....	5
3.2 Understand User Interfaces	5
3.3.1 Open DVR HDD/File.....	6
3.3.2 Playback Controls	6
3.3.3 Select Display Mode	7
3.3.4 Set Playback Channel.....	7
3.3.5 Set Video.....	7
3.3.5 Set Audio.....	8
3.4 Search Video.....	8
3.4.1 Search by Segment.....	8
3.4.2 Search by Alarm.....	8
3.4.3 Search by Date/Time.....	9
3.4.4 Search by <i>Video Slide Bar</i>	9
3.5 Archive and Print.....	9
3.5.1 Archive Video	9
3.5.2 Save Image.....	10
3.5.3 Print Image.....	10

1 Understand DVR Reader

1.1 Package Content



The package includes DVR Reader, power adapter, power cord, USB2.0 cable, and keys.
Note: Hard disk tray is not included.

1.2 Front Panel



Note: Hard disk tray is not included.

1.3 Back Panel



1.4 Minimum System Requirements

CPU	Intel® Pentium® 4, 2GHz processor or faster
Memory	256MB RAM (512MB or more recommended)
HDD	100MB hard disk space; additional disk space for video capture
USB	USB 2.0 port
Peripherals	Windows-compatible display with at least 1024x768 resolution Windows-compatible mouse or pointing device Windows-compatible sound card Windows-compatible CD-ROM drive
OS	Microsoft® Windows® 2000/XP™

1.5 Specifications

Supported Products

DVR Models	1/4/6/9/16 channel DVR
Multiplexer Models	4BDX, 4CDX, 8CDX, 16CTX

Front Panel

Lights	Two LED's to indicate power and hard disk activity
Lock	HDD tray lock

Rear Panel

Power switch	Power ON/OFF
Interface Connector	USB Type B connector
Power Connector	6 pin 5V/12V DC

Software Functions

Operations	1/4/9/16 multi-channel playback Playback forward/backward at 0.1~16x speed Audio playback for 1~60FPS recordings Pause Step forward/backward Jump to beginning or end of a segment
Search	Search video by segment list, date/time and alarm list Slide bar to move video pointer Display current video date/time
Archive	Save still image to BMP or JPEG file Print still image Save video to Motion JPEG AVI file up to 4GB Save disk raw data into proprietary file Save meta-data to text or binary file *: Length limitation depends on various PC hardware, disk and OS configurations.

Power

Power	DC 5/12V
-------	----------

Operational Environment

Temperature	0 °C ~ 50°C (32 °F ~ 122°F)
-------------	-----------------------------

Dimensions & Weight

Dimensions (W/H/D)	155 mm × 47mm × 277mm (6.1in × 1.8in × 10.9in)
Weight	1.35 kg (3.0 lbs)

2 Setup DVR Reader

Note: Please carefully follow these instructions to insert and remove the HDD carrier to avoid damages to the DVR Reader or hard disk.

2.1 Install DVR Reader software

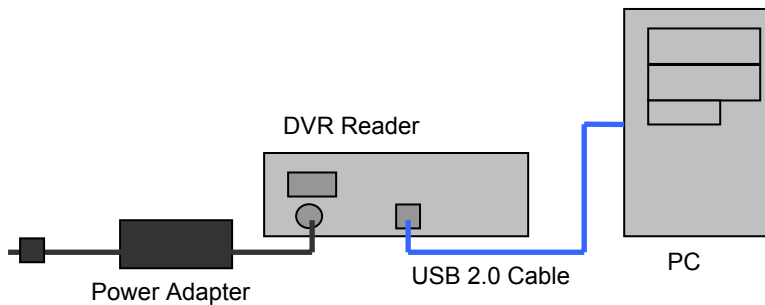
Please note that DVR Reader only supports Windows 2000/XP.

1. Turn on your PC
2. Insert DVR Reader CD-ROM
3. Run [CDROM]:\setup.exe if the program does not automatically run



4. Click *DirectX 9.0b Runtime* and follow the instructions to install DirectX 9.0b Runtime
5. Click *DVR Reader* and follow the instructions to install DVR Reader software

2.2 Connect DVR Reader to PC



1. Connect USB2.0 cable to DVR Reader and your PC
2. Connect power adapter's cable to DVR Reader
3. Connect power cord to power adapter
4. Make sure the power switch is at OFF position
5. Connect power cord to power surge

2.3 Insert HDD carrier to DVR Reader

WARNING! Make sure your HDD carrier is compatible with this DVR Reader. Inserting a wrong HDD carrier to DVR Reader will seriously damage the disk and the device

1. Take out HDD carrier from DVR (Please refer to DVR user's manual)
2. Insert HDD carrier to DVR Reader and firmly push to the end
3. Lock HDD carrier
4. Turn on DVR Reader
5. Wait until the Remove/Eject icon shows up in System Tray



2.4 Remove HDD carrier from DVR Reader

1. Exit from DVR Reader application
2. Click on Remove/Eject icon in System Tray to stop the USB Mass Storage Device
3. Turn off the power
4. Unlock the HDD carrier lock
5. Remove HDD carrier from DVR Reader

3 Using DVR Reader Software

3.1 Start DVR Reader Software

Start DVR Reader software from desktop shortcut or from Start Menu *Start -> Program Files -> DVR Reader*

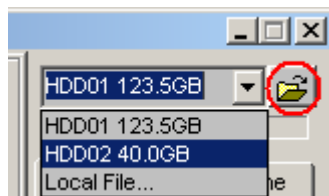
3.2 Understand User Interfaces



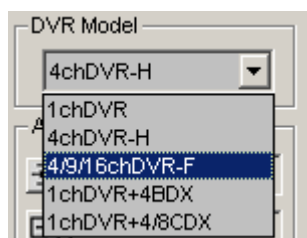
3.3 Basic Operations

3.3.1 Open DVR HDD/File

1. Choose a HDD from *HDD/File Menu* or *Local File* to load disk image file (*.eds). Note that HDD/File Menu only shows the HDD's, which are recognized by DVR Reader software.

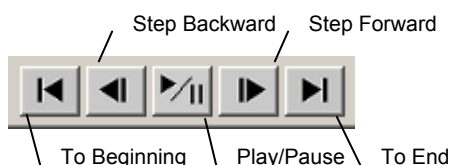


2. Click *Open* button.
3. Please wait while DVR Reader is reading disk information. *Status Bar* shows the progress of reading disk process.
4. Choose a proper DVR model or DVR/multiplexer combination from *DVR/ Model Menu*.

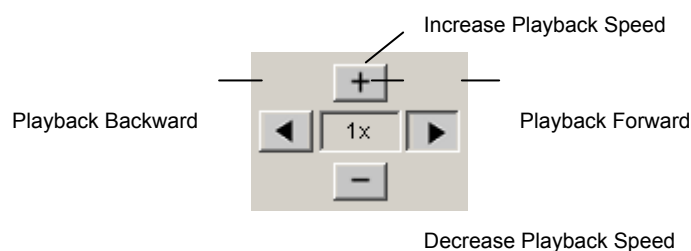


3.3.2 Playback Controls

1. Click on *Playback Control Buttons* to Playback, Pause, Step Forward/Backward, Jump to Beginning/End.



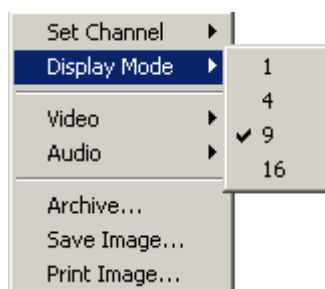
2. Click on *Playback Direction/Speed Buttons* to change playback direction and speed.



Note: Playback speed range is 0.1~16x and they are approximate speeds.

3.3.3 Select Display Mode

1. Right click on *Video Window* to bring up *Function Menu*
2. Click on *Display Mode* and choose desired display mode.



3.3.4 Set Playback Channel

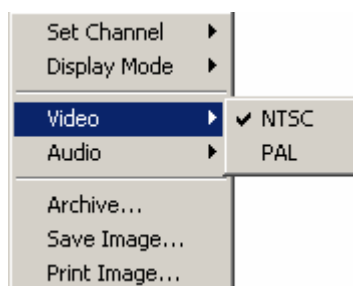
1. Right click on *Video Window* where playback channel is to be set.
2. In *Function Menu*, click on *Set Channel* to choose desired playback channel.



Note: One channel can only be shown in one window. If two windows are set to playback the same channel, only the last set one will show video correctly.

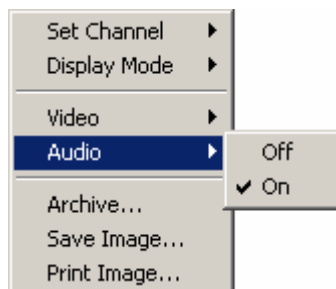
3.3.5 Set Video

1. Right click on *Video Window* to bring up *Function Menu*.
2. Click on *Video* to set video mode to *NTSC* or *PAL*



3.3.5 Set Audio

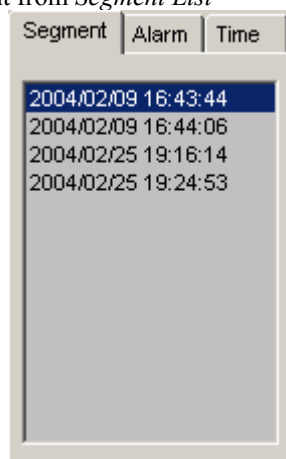
3. Right click on *Video Window* to bring up *Function Menu*.
4. Click on *Audio* to set audio to *On* or *Off*



3.4 Search Video

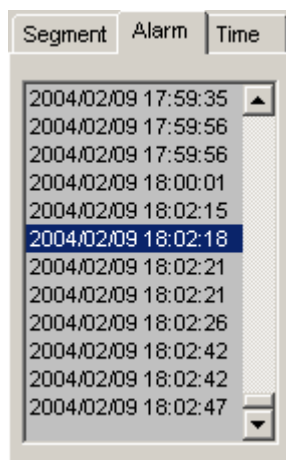
3.4.1 Search by Segment

1. Choose a segment from *Segment List*



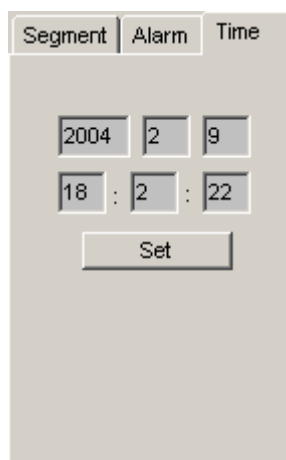
3.4.2 Search by Alarm

1. Choose an alarm time from *Alarm List*



3.4.3 Search by Date/Time

1. Set desired Date/Time on *Video Search Time Tab*
2. Click on *Set* button



3.4.4 Search by Video Slide Bar

1. Grab *Video Slide Bar* cursor to move to desired position.



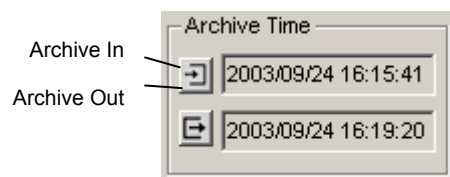
Note: *Video Slide Bar* can only move inside the current segment.

3.5 Archive and Print

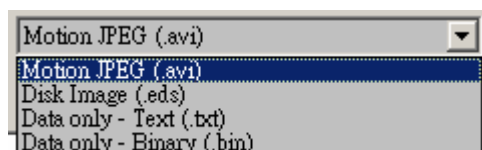
3.5.1 Archive Video

DVR Reader can archive video into AVI file or disk image. However, archive functions are not designed to save long time video. Archive to AVI file should always be limited to the minimum time range. Archive AVI file over 4GB is not supported.

1. Set archive in/out points by clicking on *Archive In* button and *Archive Out* button.
Note: for *Disk Image (.eds)* format, the actual *Archive In* time will be equal or earlier than specified time, and *Archive Out* time will be equal or later.



2. Right click on *Video Window* to bring up *Function Menu*.
3. Click on *Archive* to bring up *Save As* dialog box.
4. Type in filename.
5. Choose file type.

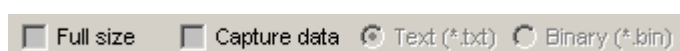


Type	Video	Audio	Data	
Motion JPEG (.avi)	√	√	*	Single channel archive. Original video. Fast.
Motion JPEG Full Size (.avi)	√	√	*	Stretched and recompressed single channel video. Slow.
Disk Image (.eds)	√	√	√	Complete multi-channel archive. Fast. Can only be read by DVR Reader software
Data only - Text (.txt)			√	Data saved in text mode
Data only - Binary (.bin)			√	Data saved in binary mode

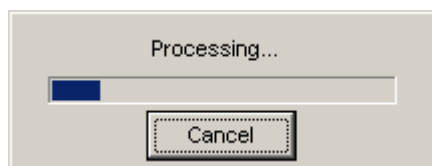
*: Optional to save to a separate file

Table 3.1 Archive Type Comparison

6. Check *Full Size* checkbox if full size video is desired. [MJPEG type only]
7. Check *Capture Data* and choose *Text* or *Binary* if data capture is desired. [MJPEG type only]



8. Click OK to start archiving. *Archive Processing* dialog box will show up. Click Cancel if you want to cancel archiving. The progress bar and the right bottom corner's *Date/Time* indicate the archive progress.



Note: If the Date/Time doesn't change for long time, e.g. 30 seconds, the disk might be full or other problem happened. In such case, please cancel the process and archive a shorter range of video.

3.5.2 Save Image

1. Right click on *Video Window* to bring up *Function Menu*.
2. Click on *Save Image* to bring up *Save As* dialog box
5. Type in filename
6. Choose file type: Bitmap or JPEG

3.5.3 Print Image

1. Right click on *Video Window* to bring up *Function Menu*.
2. Click on *Print Image* to bring up *Printer* dialog box
3. Configure printer and click OK to print the image.