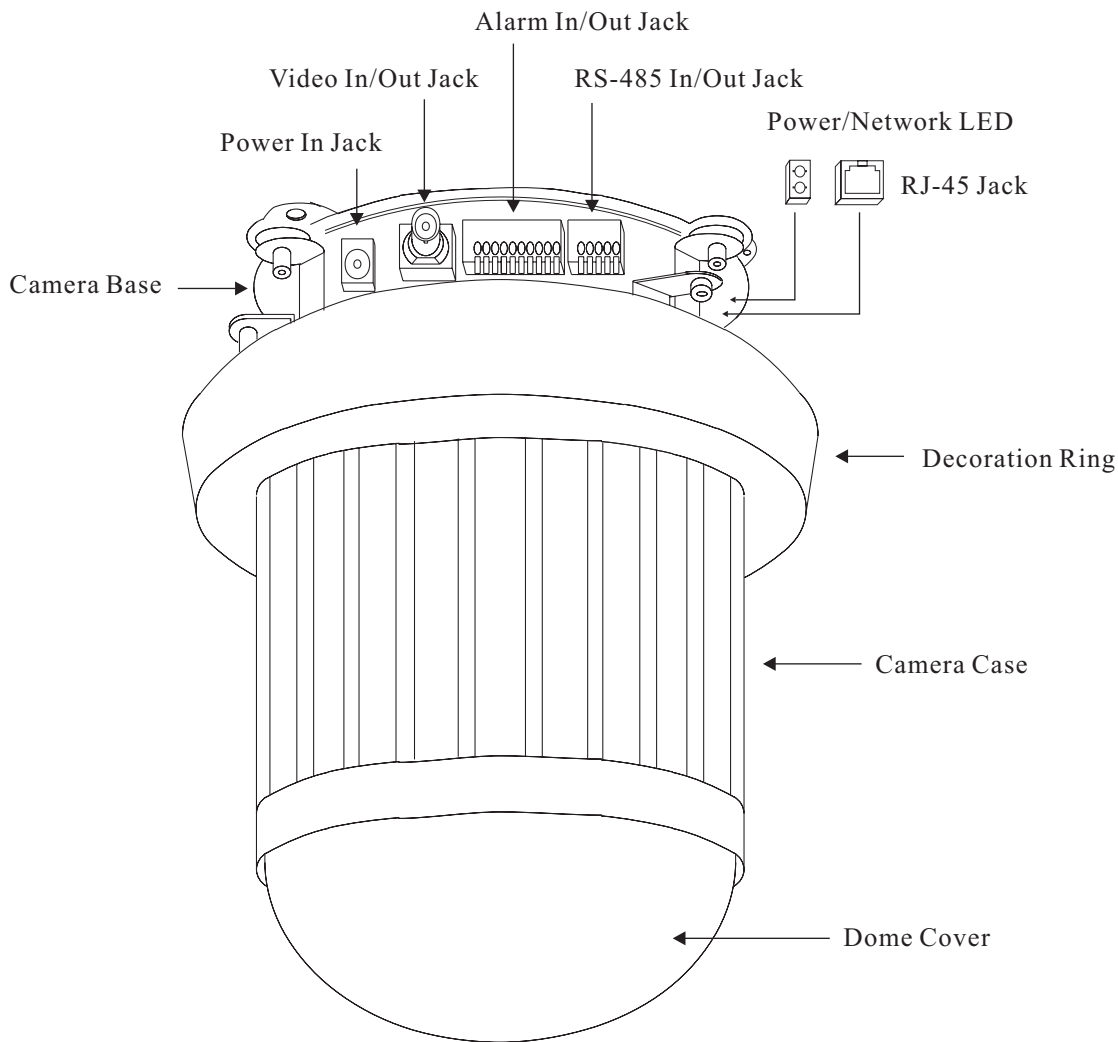


IP Fast Dome Camera

Quick Installation Guide



Chapter 1. STRUCTURAL ELEMENT



Follow these steps to install your IP Fast Dome:

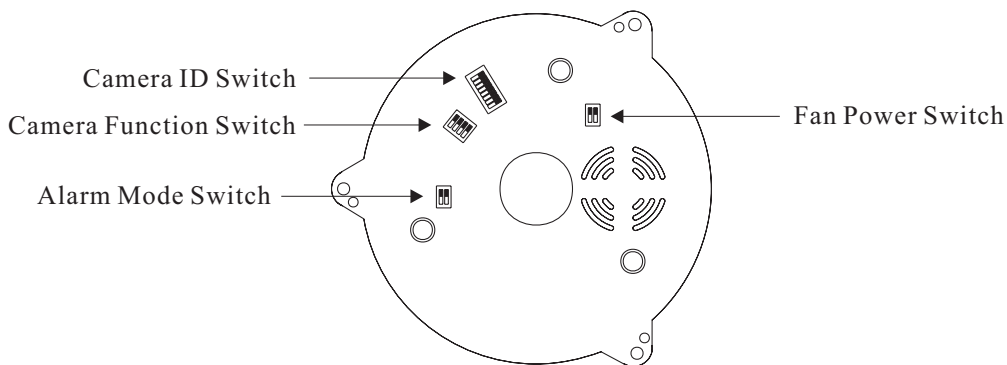
1. Familiarize yourself with the IP Fast Dome - (this page)
2. IP Fast Dome Hardward Installation - (Page 3)
3. IP Fast Dome Software Setup - (Page 7)



For more information, please visit our web site <http://www.meritlilin.com>

Chapter 2. FAST DOME CAMERA SETUP

DIP Switch Setting



Chapter 2-1. Fan Power Switch

Turn the number 2 switch to ON position to activate the internal fan. This will maintain the temperature inside and make the electric parts longer life.

Chapter 2-2. Alarm Mode Switch

Alarm Mode can be set as Lock or Release mode. Turn number 1 switch to ON position to choose Release mode. Turn number 1 switch to OFF position to choose Lock mode.

Fast Dome has 6 alarm inputs and 1 output, which can be set either NC (normally close) or NO (normally open) mode. Turn number 2 switch to ON position to choose NC mode.

Turn number 2 switch to OFF position to choose NO mode.

Chapter 2-3. Camera Function Switch

Turn number 1 switch to ON position for AGC function

Turn number 2 switch to ON position for BLC function

Turn number 3 switch to ON position for AWB function

Turn number 3 switch to OFF position for Manual White Balance (MWB)

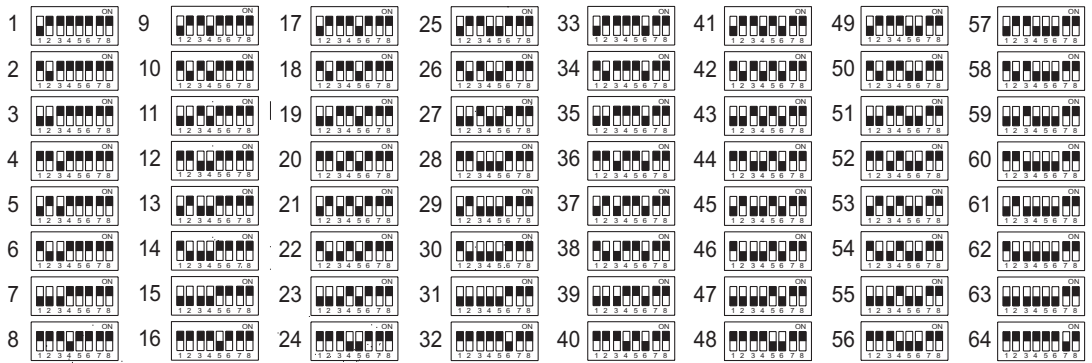
When fast dome is set to MWB, turn number 4 switch to ON for Outdoor (color temp. 3200K) or to OFF for Indoor (color temp. 6300K)

Chapter 2-4. Fast Dome ID Address Setting Refer Chart

Up to 64 Fast Dome Camera can be serial linked in one system.

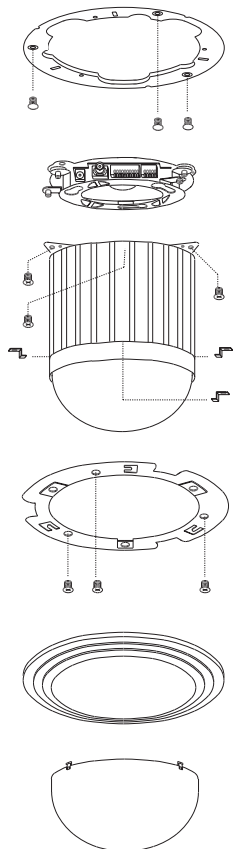
Therefore each dome is addressed by ID switch located at the base of the Fast Dome.

Below is the address setting for camera 1~64:

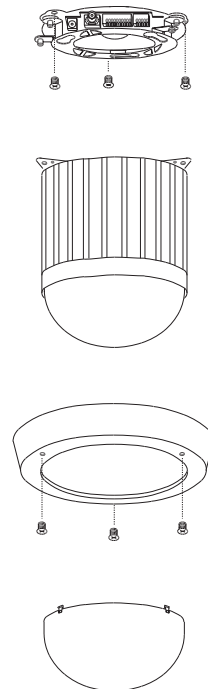


Chapter 3. HARDWARE INSTALLATION

Embedded Mounting



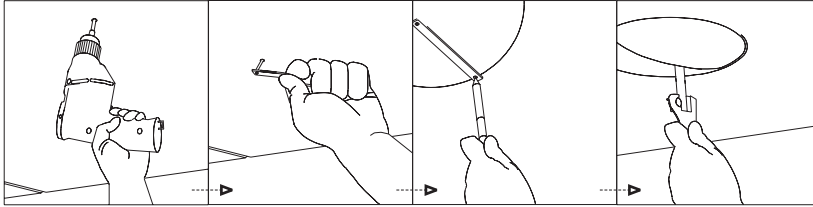
Attached Mounting



Chapter 3-1. Embedded Mounting

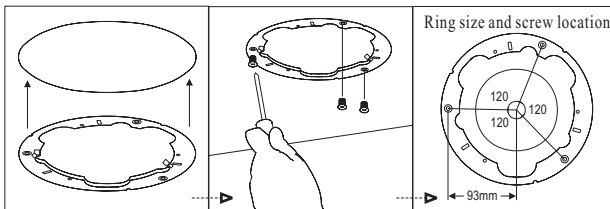
Step 1 Ceiling Preparation

1. Drill a 3/32" (2.4mm) hole at the center of the chosen area.
2. Use a pencil and a compass to mark a circle 6.7" (170mm) in diameter and cut the circle.



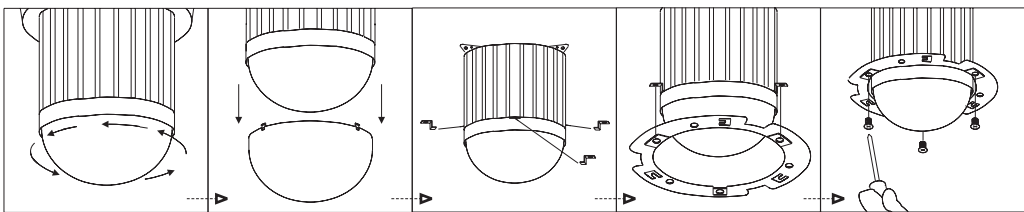
Step 2 The Ceiling Ring

1. Attach the ring to ceiling.
2. Tighten the three tapping screws into the ceiling or three machine screws with screw nuts.



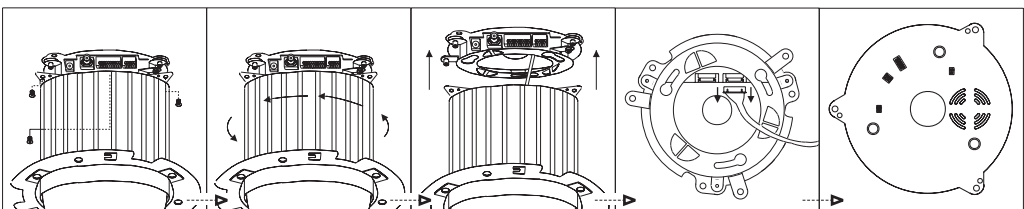
Step 3 The Fix Ring

1. Turn the dome cover anti-clockwise.
2. Separate the dome cover from camera.
3. Put on the three L shape screw nuts.
4. Attach fix ring with screw nuts.
5. Tight the three black screw into the screw nuts.



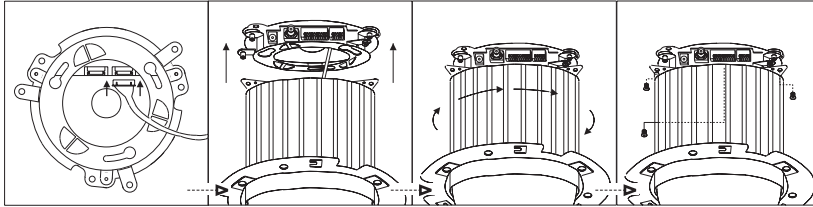
Step 4 Camera Setting

1. Untighten the three screws from the base.
2. Turn the camera body anti-clockwise.
3. Separate the camera body from the base.
4. Unplug the connection cable.
5. Setting Fast Dome Camera.



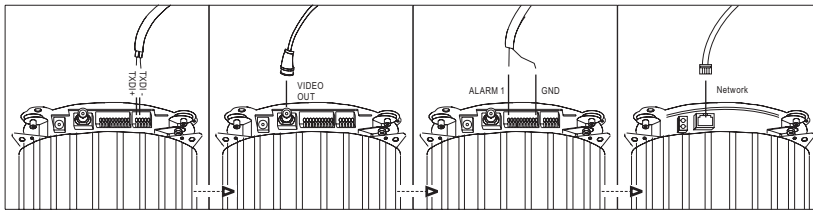
Step 5 Attach the Camera Body and Base

1. Reconnect the connection cable.
2. Attach camera body to base.
3. Turn camera body clockwise to tight position.
4. Tight the three screws to fix the camera body.



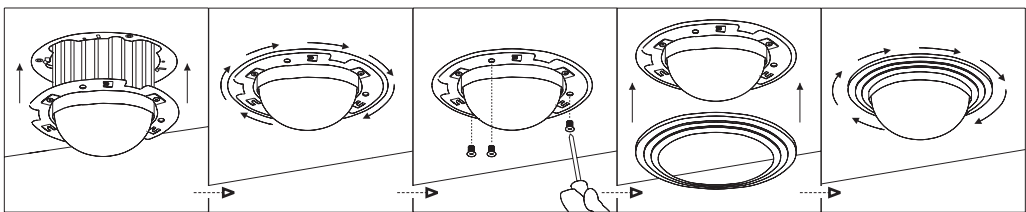
Step 6 Connection

1. Connect RS-485 cable.
2. Connect video signal cable.
3. Connect alarm output cable.
4. Connect Ethernet cable.



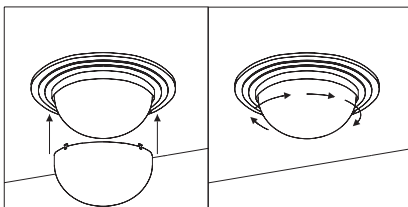
Step 7 Install Camera Body and Decoration Ring

1. Put camera body and the fix ring into the hole.
2. Turn the camera body clockwise to tight position.
3. Tighten three black screws.
4. Put on decoration ring.
5. Turn the ring clockwise to tight position.



Step 8 Install The Dome Cover

1. Attach dome cover to camera body.
2. Turn the dome cover clockwise to tight position.

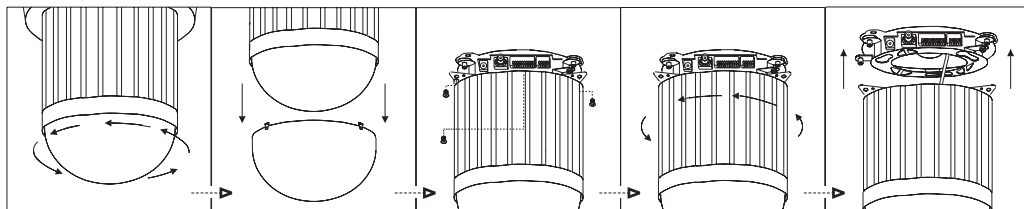


Note : After dome cover is attached, use glass-cleaning cloth to clean dome cover.
Unclean dome cover may affect camera performance.

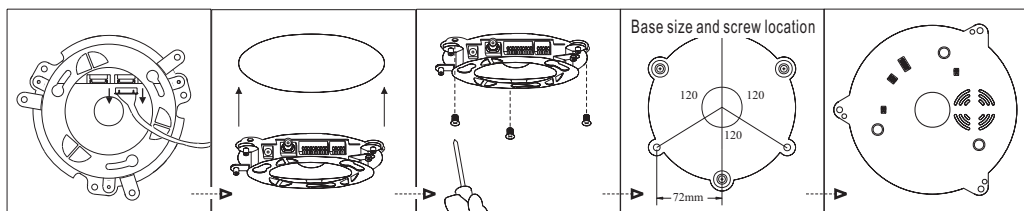
Chapter 3-2. Attached Mounting

Step 1 Fix The Base

1. Turn the dome cover anti-clockwise.
2. Separate the dome cover from camera.
3. Untighten the three screws from base.
4. Turn the camera cover anti-clockwise.
5. Separate the camera body from the base.

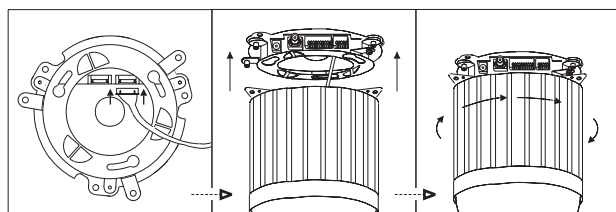


6. Unplug the connection cable.
7. Attach base to ceiling.
8. Tighten three tapping screws into the ceiling.
9. Setting Fast Dome Camera.



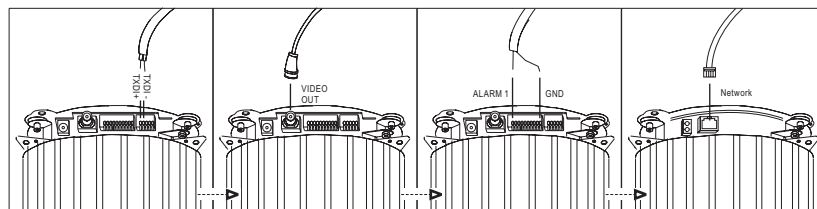
Step 2 Attach Camera Body and Base

1. Reconnect the connection cable.
2. Attach camera body to base.
3. Turn camera body clockwise to tight position.



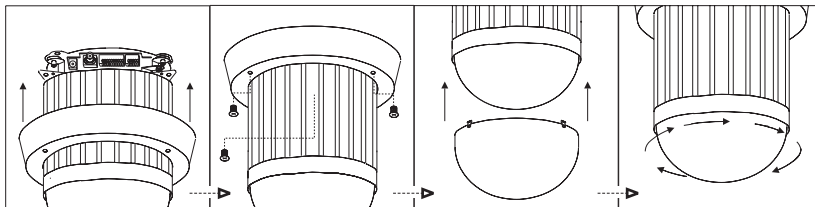
Step 3 Connection

1. Connect RS-485 cable.
2. Connect video signal cable.
3. Connect alarm output cable.
4. Connect Ethernet cable.



Step 4 Install Decoration Ring and Dome Cover

1. Put on Decoration ring to base.
2. Tighten the three screws.
3. Put on dome cover to camera body.
4. Turn dome cover clockwise to tight position.



Note : After dome cover is attached, use glass-cleaning cloth to clean dome cover. Unclean dome cover may affect camera performance.

Note:

In order to control IP Fast Dome via both keyboard and web page, please set the ID switch. Once the ID switch is set, please also set the ID of the web page.

Chapter 4. SOFTWARE INSTALLATION

Chapter 4-1. Assign IP by IP Installer

IP Installer is a Windows 98/ME/NT/2000 program. It is the software providing an easier way for the setting of IP address and network configurations of IP Fast Dome.

Using this tool, you can easily set multiple IP Fast Domes at the same time with the batch setting function. By utilizing IP Installer, the setting process is largely simplified and the setting time is effectively shortened. Moreover, IP installer can not only save all the configurations of IP Fast Dome as backup, but also restore the previous configurations of IP Fast Dome.

Execute IP Installer

Double click the mouse left button on the IP Installer icon.



The IP Installer form is displayed on the screen.

Click this button to search the IP Fast Dome / Video Server in the LAN.

State	Model	Mac Address	IP Address	Subnet Mask	Gateway	DNS1	DNS2	DNS3	Http Port
<input type="checkbox"/>	F4000	00-04-29-0...	192.168.0.156	255.255.255.0	0.0.0.0	255...	255...	255...	80
<input type="checkbox"/>	F4000	00-04-29-0...	192.168.0.32	255.255.255.0	192.1...	61.2...	61.2...	168...	4004
<input type="checkbox"/>	F4000	00-04-29-0...	192.168.0.101	255.255.255.0	192.1...	61.2...	61.2...	168...	80
<input type="checkbox"/>	F4000	00-04-29-0...	192.168.0.149	255.255.255.0	192.1...	168...	255...	255...	2000
<input type="checkbox"/>	F4000	00-04-29-0...	192.168.0.155	255.255.255.0	192.1...	255...	255...	255...	80
<input type="checkbox"/>	F4000	00-04-29-0...	61.220.235.172	255.255.255.248	61.22...	168...	168...	0.0...	80
<input type="checkbox"/>	F4000	00-04-29-0...	192.168.0.200	255.255.255.0	192.1...	255...	255...	255...	80

List all the IP Fast Dome / Video Server found in the LAN.

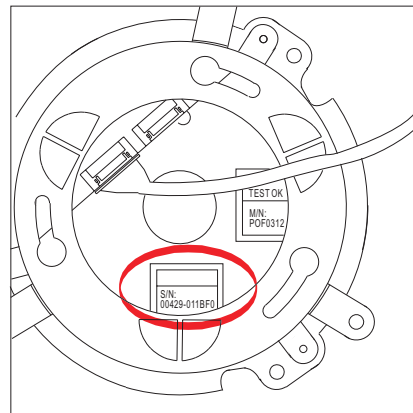
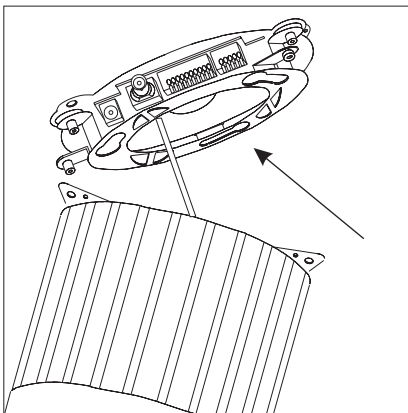
Preparation before IP Assignment

Always consult your network administrator before assigning the IP address to your IP Fast Dome / Video Server.

Make sure that the IP Fast Dome is powered on and correctly connected to the network.

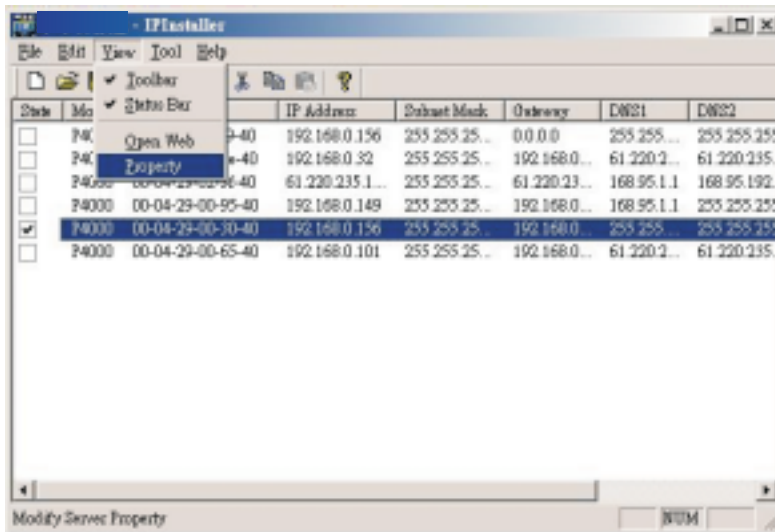
Obtain the IP address not used yet from your network administrator.

MAC address : Each IP Fast Dome has a unique Ethernet address (MAC address) shown on the top of the IP Fast Dome base as the serial number (S/N), 12 digits, e.g. 000429-XXXXXX.



Note : You have to separate base from body to see the MAC address. For instruction, please refer to Chapter 3-1 step 4 to separate the base.

➤ Assign the IP Address to IP Fast Dome

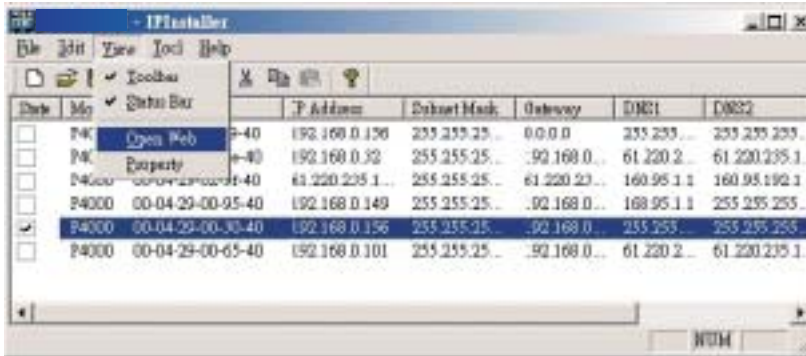


Select the MAC address of your IP Fast Dome in the list. The MAC address is identical to the unit's S/N. Click the menu bar View/Property to open the Property Page for the selected item. After filling in the properties, click the OK button to submit the settings for the unit and the settings are activated immediately.



Verify the IP Address and Open the Home Page

To access the Home Page of the selected unit, run the View/Open Web on the menu bar. If your browser is opened and automatically connected to the IP Fast Dome Home Page, it means you have assigned an IP Address to the unit successfully. Now you can close the IP Installer and start to use your IP Fast Dome.



Chapter 4-2. Assign IP Address by ARP

Before using IP Fast Dome, users must set the IP address in advance. There are two different ways to set IP address into IP Fast Dome.

Note before IP assignment

- › Make sure the IP Fast Dome is powered on and connected to the network correctly.
- › Obtain a unique IP address from your network administrator.
- › Each IP Fast Dome has a unique Ethernet address (MAC address), which is recorded as 12 digits serial number labeled at the bottom side of IP Fast Dome / Video Server / Network Camera, e.g. 000429XXXXXX.
- › The following example uses the PC with the IP address 192.168.0.1 and is going to setup IP Fast Dome with the IP address 192.168.0.200 whose MAC address is 000429000150.
Do not use those addresses featured as examples in this document, always consult your network administrator before assigning an IP address.
- › The IP address assigned to the IP Fast Dome shall be the same IP domain (presented as same subnet mask) as the PC IP address. In our case, a PC IP address is 192.168.0.1 and the IP Fast Dome is 192.168.0.200, so the subnet mask shall be 255.255.255.0. If a PC subnet mask is 255.255.255.128 or higher, then the domain can't cover 192.168.0.200, so the setting won't take effective.
- › For speedily installing and easily setting the IP Address, there are provides an IP Installer Wizard for you. Please install the application and see the user's manual for detailed description and usage.

Step 1 → In Windows, open DOS window.

- Enter DOS by <Start → Program → MS-DOS Prompt>

Step 2 → Ensure the IP address assigned to IP Fast Dome doesn't occupy by other Host.

- In DOS window, entering <ping 192.168.0.200> shall get time out message.

```
C:\> ping 192.168.0.200
Pinging 192.168.0.200 with 32 bytes of data:

Request time out.
Request time out.
Request time out.
Request time out.

Ping statistics for 192.168.0.200:
    Packets : Sent = 4, Received = 0, Lost = 4 (100% loss)
Approximate round trip times in milliseconds:
    Minimum = 0ms, Maximum = 0ms, Average = 0ms

C:\>
```

Step 3 → Enter command <arp-s [IP Fast Dome IP Address] [IP Fast Dome MAC Address]>.

- In DOS, enter arp-s 192.168.0.200 00-04-29-00-01-50.

Step 4 → Enter command <ping-t [IP Fast Dome IP Address]> shall get constant reply after 3~4 timeouts, then press CTRL-C to exit pinging.

- In DOS, enter ping-t 192.168.0.200

```
C:\> arp-s 192.168.0.200 00-04-29-00-01-50
C:\> ping-t 192.168.0.200
Pinging 192.168.0.200 with 32 bytes of data:

Request time out.
Request time out.
Request time out.
Reply from 192.168.0.200: bytes = 32 time = 5ms TTL = 255
Reply from 192.168.0.200: bytes = 32 time = 4ms TTL = 255
Reply from 192.168.0.200: bytes = 32 time = 4ms TTL = 255
Reply from 192.168.0.200: bytes = 32 time = 4ms TTL = 255

Ping statistics for 192.168.0.200:
    Packets: Sent = 7, Received = 4, Lost = 3 (42% loss),
Approximate round trip times in milliseconds:
    Minimum = 4ms, Maximum = 5ms, Average = 2ms
Control-C

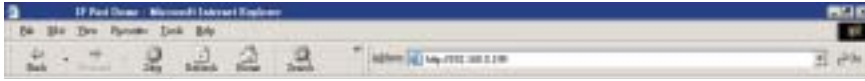
C:\>
```

Step 5 → Complete the setting and verify the installation. Then, open your web browser (e.g. Internet Explore) and enter the IP address in the Location/Address field. Consequently, the IP Fast Dome video home page will be opened.

- Enter http://192.168.0.200 in Location/Address field of Internet Explore, then the Internet live video can be opened.

Chapter 4-3. Verify and Complete the Installation from Your Browser

Start your browser and enter the IP Address of your IP Fast Dome in the location/address field.



The IP Fast Dome Camera can support Microsoft Internet Explorer and Netscape. But the voice feature (Video Server / Network Camera only) can only be run under Microsoft Internet Explorer.

When browsing the Home Page at the first time with the Microsoft Internet Explorer, you must temporarily lower your security settings to perform a one-time-only installation of ActiveX component into your workstation, as described below.

- From the Tools menu, select Internet Options.
- Click the Security tab and make note of your current security settings.
- Set the security level to Low and click OK.
- Type the Internet Address or Host Name for your IP Fast Dome into the Address field.
- A dialog asking if you want to install wcp10.cab will appear. Click yes to start the installation.
- Once the ActiveX installation is complete, return the security settings to their original value, as noted above.

To continue the configuration of your own application, click the configure button in the top left corner of this window.

Note:

In order to control IP Fast Dome via both keyboard and web page, please set the ID switch. Once the ID switch is set, please also set the ID of the web page.

DISTRIBUTOR:

66-7000IPOOE-4