





VIDEO SERVER

PVS-1020

INSTRUCTION MANUAL

IMPORTANT SAFEGUARDS

	<p>CAUTION</p> <p>RISK OF ELECTRIC SHOCK DO NOT OPEN</p>	
<p>CAUTION : TO REDUCE THE RISK OF ELECTRIC SHOCK, DO NOT REMOVE COVER (OR BACK) NO USER SERVICEABLE PARTS INSIDE. REFER SERVICING TO QUALIFIED SERVICE PERSONNEL.</p>		

GRAPHIC SYMBOL EXPLANATION

The lightning flash with arrowhead symbol, within an equilateral triangle, is intended to alert the user to the presence of uninsulated "dangerous voltage" within the product's enclosure that may be of sufficient magnitude to constitute a risk of electric shock to persons.



The exclamation point within an equilateral triangle is intended to alert the user to the presence of important operating and maintenance (servicing) instructions in the literature accompanying the unit.



<p>CAUTION</p> <p>RISK OF EXPLOSION IF BATTERY IS REPLACED BY AN INCORRECT TYPE.</p> <p>DISPOSE OF USED BATTERIES ACCORDING TO THE INSTRUCTIONS</p>
--



TRADEMARK ACKNOWLEDGMENTS

Windows, Linux, Microsoft, Internet Explorer, DynDNS are registered trademarks of the respective holders.

Java and all Java-based trademarks and logos are trademarks or registered trademarks of Sun Microsystems, Inc. in the United States and other countries.

Other names of companies and their products mentioned in this manual may be trademarks or registered trademarks of their respective owners.

OTHER REFERENCE

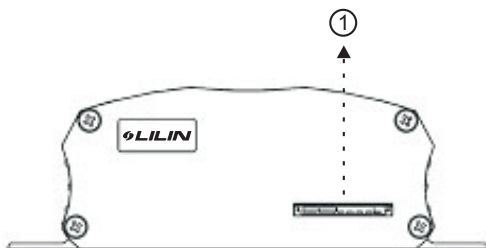
Merit Lilin IP-based product's full features can be accessed via HTML configuration page. For advanced HTTP network setting or development, please refer to HTTPAPI document in the product CD.

CONTENT

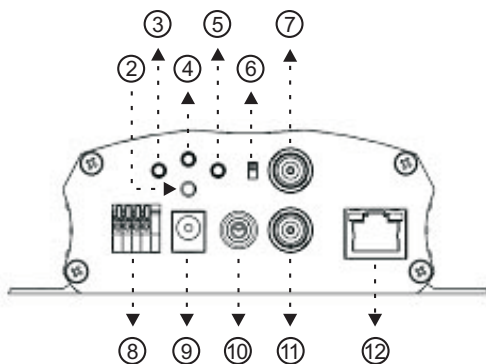
System Overview	1
PVS-1020 System Architectures	3
Mounting	5
Installation	6
Alarm IO ping assignment	6
Before Access PVS-1020	7
Configure IP address using IPScan Utility	7
Configure IP Address Using Keypad	8
Setup IP Address	9
Configure IP Address Using HTML Page	10
Internet Browser Setting & Software Component Required .	11
Technical Specifications	12

● SYSTEM OVERVIEW

Front View



Front View



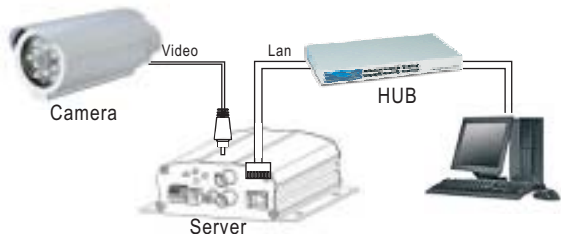
Input/Output Device Component Description

1. SD card socket
2. Power LED indicator (Green LED)
3. Key SET
4. Key MENU
5. Key SELECT
6. Menu Setup Mode/Live Video Looping Mode Switch
7. Analog video input (BNC)
8. Alarm input & output
9. DC12V power input
10. Audio input
11. BNC analog video output
12. RJ-45 LAN connector

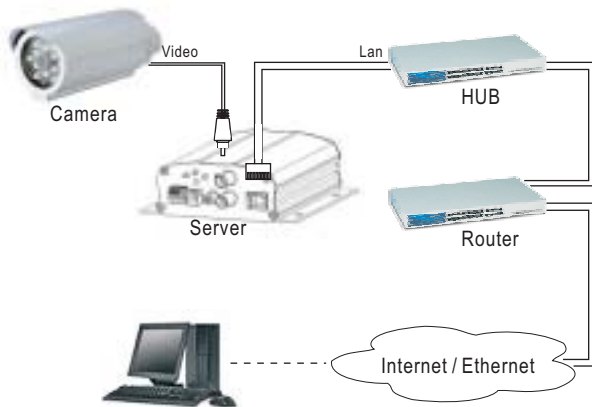
● PVS-1020 SYSTEM ARCHITECTURES

For connecting PVS-1020 to the network, please follow one of the system architectures:

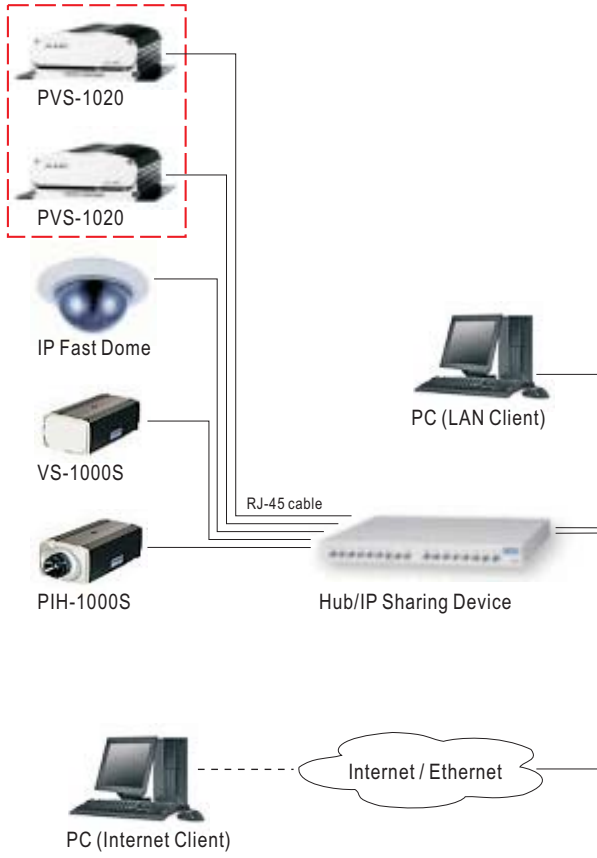
Hardware Installation for LAN access



Hardware Installation for Internet access



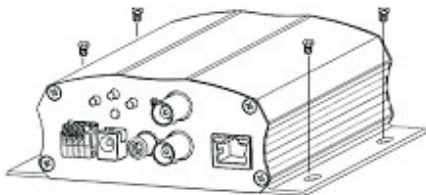
System Architecture



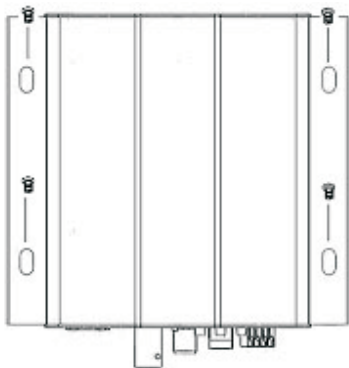
● Mounting

1. Please use 4 supplied screws to fix the base plate of PVS-1020 to a flat surface.
2. For wall mounting, place front panel of PVS-1020 facing up and fix the base plate to a flat surface.

Flat surface mounting



Wall mounting



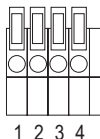
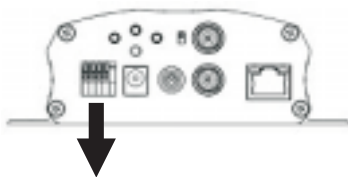
Important: PVS-1020 is designed for indoor use only, and must not be exposed to direct sunlight.

● Installation

Once PVS-1020 is fixed at the installation site, to install PVS-1020, please follow the instruction below:

1. The BNC connector of source video is connected to PVS-1020's analog video input.
2. RJ-45 network cable is plugged into PVS-1020's RJ-45 LAN connector.
3. Digital input and output are properly wired to peripherals.
4. SD card is placed in PVS-1020's SD socket if applicable.
5. Connect power connector to PVS-1020's power input connector (DC12V).

● Alarm IO ping assignment



Pin	Definition
1	Alarm input
2	Ground
3	Alarm output
4	Alarm common

Alarm input — Normal open (NO)

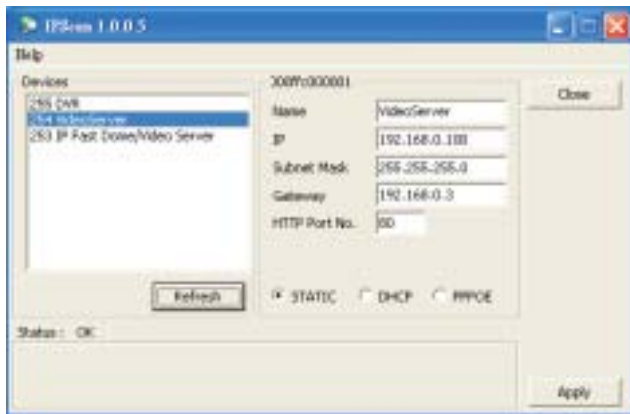
Alarm output — Relay contact.

● Before Access PVS-1020

Before accessing PVS-1020, make sure that camera's analog BNC, camera's power cable, RJ-45 network cable, and PVS-1020's power cable are properly installed. For setup IP address, please consult your network administrator for available IP addresses. The default IP address of PVS-1020 is 192.168.0.100. User can also use default IP address to verify PVS-1020's network connection.

● Configure IP Address Using IPScan Utility

To configure IP address using IPScan utility, copy IPScan application from installation CD to your local PC or execute IPScan software from installation CD directly. To change IP address, subnet mask, gateway, or HTTP port, please follow steps below:



1. Run IPScan utility.
2. Click on Refresh button. All available devices get listed in Device list box.
3. Select the device item in Device list box.
4. Edit or modify addresses in IP, Subnet Mask, Gateway, or HTTP Port edit box.
5. Click on Apply button to configure the settings.
6. Click on Refresh button to verify the settings.

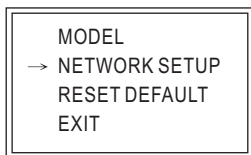
● **Configure IP Address Using Keypad**

To setup IP address using keypad, please follow these steps:

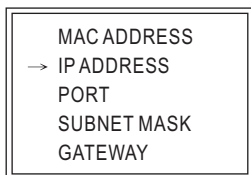
1. Connect PVS-1020's analog output to a monitor.
2. Set the mode switch (menu setup mode) to SETUP.
3. Press MENU button.
4. Re-connect power cable.
5. Release MENU button entering the menu system.
6. Follow the Menu displayed on the analog monitor to setup IP address.

● Setup IP Address

After entering PVS-1020 menu system, analog monitor displays:



To setup IP address, press SET button at NETWORK SETUP menu item.



To setup IP address, HTTP port number, subnet mask, and gateway. Use the following buttons:

1. SELECT button — move cursor.
2. SET button — enter submenu or set a digit.
3. MENU button — finish setup and return to main menu.

After finish IP address, subnet mask, and gateway, set the mode switch to Live monitoring mode. Disconnect power cable and re-connect power cable for rebooting.

● Configure IP Address Using HTML Page

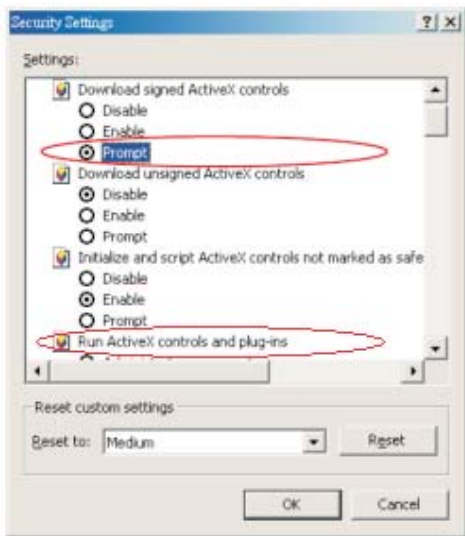
To change IP address using using HTML page, please first type the default IP address, 192.168.0.100 in Internet browser and follow steps below:

The screenshot shows a web-based network configuration interface. At the top, there's a blue header with the word 'Network' and a sub-tab labeled 'General'. Below this, there are three radio buttons for 'IP Assignment': 'Static' (which is selected), 'DHCP', and 'PPPoE'. A list of configuration fields follows, each with a label and an input box. The fields and their values are: 'IP Address' (192.168.1.171), 'Subnet Mask' (255.255.255.0), 'DNS 1 P Address' (192.168.1.1), 'DNS 2 P Address' (0.0.0.0), 'Gateway IP Address' (192.168.0.1), 'HTTP Connection Port' (80), 'PPPoE Account' (admin@192.168.0.100), and 'PPPoE Password' (password). At the bottom, there is a blue note: 'System reboot is required after PPPoE connection is set. Use IPScan utility to find out assigned global IP address.' and a 'Submit' button.

1. Logon PVS-1020 using default username and password — "admin" and "pass".
2. Click on "Configure" hyper link.
3. Click on Network → General hyper link.
4. Type or modify edit box for IP address, subnet mask, gateway, or HTTP connection port.
5. Click on Submit button.

● Internet Browser Setting & Software Component Required

Make sure that your Internet Browser allows signed ActiveX plug-in running on your PC. Set "Download Signed ActiveX plug-in controls" to "Prompt" and "Run ActiveX control and plug-in" to "Enable" at Internet Explore→Tools→Options→Security Settings.



After finishing above security settings, accessing PVS-1020's live video by default IP address of PVS-1020 using Internet Explorer will prompt a Security Warning dialogue box. Click on OK Button to download the ActiveX directly from PVS-1020.

● Technical Specifications

Item	Specification	
CPU	16bits	
ROM	1M Bytes Flash ROM	
RAM	8M Bytes SDRAM	
Image compression	JPEG/Motion JPEG	
Video adjustment	Brightness, Contrast, Hue, Saturation, Rotation, AWB	
Video quality	Three video quality adjustable	
Video looping	One	
Audio	Remote monitoring, 0.7Vp-p, 300Hz to 3KHz	
Resolution	VGA: 640x480 , CIF(default): 320x240 , QCIF: 160x120	
Network throughput	Up to 30 fps for QCIF; 15fps for CIF; 10fps for VGA	
Motion detection	Two motion detection zones	
Alarm	Input x 1 , relay output x 1	
Alarm/motion notification	Via FTP or Email	
Protocols	Basic	TCP/IP , ICMP , HTTP
	Advanced	DHCP, DNS, DDNS, SMTP, FTP, PPPoE, NTP
Installation	Admin web page, IPScan software	
IP Setup	Built-in keypad control	
Software Upgrade	HTML direct update	
Security	Two-layer password protection: Admin and Guest	
SD Card	Standard JPEG 320x240 resolution snapshots	
Recording	SD card JPEG recording / PC AVI recording	
AVI File Exporting	ActiveX converts JPEG to AVI	
Frame Statistics	Frame rate and frame size	
User Logon Statistics	Yes	
Built-in Language	English & Chinese	
SDK	Yes (included in product CD)	
OS Supported	Windows 2000/XP	
Browsers Supported	Windows: Internet Explorer 5.x or later	
Complimentary software	IPScan utility (included in product CD), ActiveX (automatic downloaded)	
Operation Conditions	Temp: -10°C ~ +50°C / Humidity: 0% ~ 80%	
Dimension	130 x 135.8 x 44mm	
Power	DC 12VDC, min 500mA	

Design and specifications are subject to change without notice.

66-1020CSE-2



MERIT LILIN ENT. CO., LTD
<http://www.meritlilin.com>

66-1020CSE