

IP Server

Install Guide Manual

(Ver 4.1)

ONIX SYSTEM INC.

<http://www.onix.co.kr>

307, E-Space B/D, 212-26, Kuro-Dong, Kuro-Ku, Seoul, Korea

Tel: +82-2-839-5544

Fax: +82-2-839-5055

E-Mail: onix@onix.co.kr

1. Forward

To increase the maximum efficiency of networking service, even under the limited resources of Net working, it tends to grow the utilization of Dynamic IP (Internet address).

By the way , this makes worse for the man who seeks the Peer to Peer communications As Software (ONIX-DVR, ONIX-Net) are supported the Peer to Peer communications, whenever Dynamic IP happened to be changed, it needs lot of works and time-consumption to find out the new IP address and to notify its change.

Now, the functions of ONIX IP SERVER, we newly developed, are to control the Dynamic IP for the use of Software such as ONIX-DVR, ONIX Net.

By gathering the IP Information changed dynamically from the various sources, it preserves these data and notifies them to clients. Also, it helps to be aware of the status of each networking, which makes it easy and more practicable to supervise the site.

Thus, under the Net-work environments in using dynamic IP, the user can accomplish to perform all of network functions without interruption by registering the essential information for configuring-registration IP Server.

2. Program Run and exit

Run SnetManager.exe

And confirm the generation of Icon of system tray at bottom-right corner as the result of running .EXE file.



Result after running of SnetManager.exe

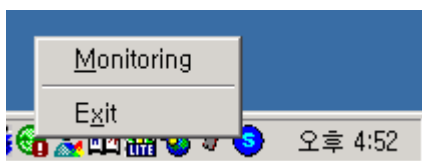
The resulted indications and their implications are as follows;

Icon	Messages	Explanation
	Listening...	Ready (succeeded in running .exe)
	Fail to start	Error encounter (failed in running .exe)
	Idle	Not Ready (Server interrupted)

If

Clicks the right button of mouse, following program menu are appeared.

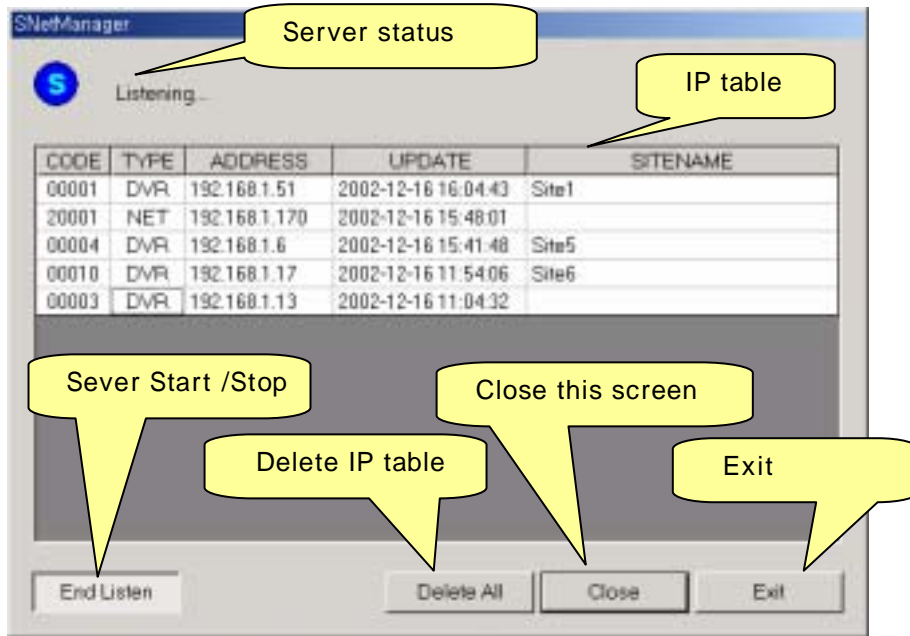
For exit of program, Select Exit in Picture Program menu.



Program Menu

3. SERVER Monitoring

SERVER monitoring will be attained by selecting monitoring in program menu. Then, SEVER monitoring Dialogue Menu is appeared



SEVER monitoring Dialogue Menu

- I. The function of each of items is as follows.
- II. SERVER Status: It indicates the status of Network SEVER.
- III. IP Table: It shows the Registered IP list for each of system.
 - CODE : Code assigned at each of machines (5 character mixed with English-letter and numeric)
 - TYPE : kinds of machines (DVR → ONIX-DVR, NET → ONIX-Net)
 - ADDRESS : New changed IP Address
 - UPDATE : Date and Time of registering IP Address
 - SITENAME : Site Name of machines installed
- IV. SERVER Start/Stop: Activating the server for networking and stop.
- V. Delete IP Table: Delete all of IP Table information.
- VI. Close this Screen: close this monitoring screen.
- VII. Exit: closing this program.

Product specifications and contents may are subject to change without notice.