

# **Network Video Server Web Client Operation**

# Table of Contents

1	Network Connection.....	4
2	Network Video Server Web Operation.....	5
2.1	Login and Logout.....	5
2.2	Go to Real-time Monitor Mode .....	6
2.3	Video (Right Mouse Menu Operation) .....	7
2.3.1	Real time Monitor .....	7
2.3.2	Multi-camera Preview .....	7
2.3.3	Fluency/Real-time .....	7
2.3.4	Start Dialog.....	7
2.3.5	Playback Control Bar .....	8
2.3.6	PTZ Control .....	8
2.3.7	Volume Adjustment.....	9
2.3.8	Video Setting.....	9
2.3.9	Alarm Setting.....	10
2.3.10	Network Data Flux.....	11
2.3.11	Full Screen.....	11
2.3.12	Resize Video .....	11
2.3.13	Video Windows .....	11
2.4	Search.....	12
2.4.1	Download.....	13
2.5	Configure .....	14
2.5.1	Load and Save Configuration.....	15
2.5.2	General .....	16
2.5.3	Record.....	17
2.5.4	Image .....	18
2.5.5	Alarm .....	19
2.5.6	Video Detection .....	21
2.5.7	Network.....	23
2.6	Assistant .....	25
2.6.1	User Management.....	26
2.6.2	Record Control.....	28
2.6.3	Log Information.....	29
2.6.4	Date and Time .....	29
2.6.5	System Information .....	29
2.6.6	Alarm Prompt .....	30
2.6.7	Upgrade BIOS .....	30
2.6.8	Mail Setting.....	31
2.6.9	Reboot.....	32

2.6.10 Record Directory .....	32
2.6.11 Auto Maintenance.....	32
2.6.12 Privacy Mask Zone.....	33
2.6.13 About .....	33
2.7 Un-install Web Control .....	33

# 1 Network Connection

Before web client operation, please check the following items:

- Network connection is right
- NVS and PC network setup is right. NVS default IP address is: 192.168.1.108.
- Use order ping `***.***.***.***`(\* NVS IP address) to check connection is OK or not. Usually the return TTL value should be less than 255.
- System is compatible with WIN VISTA web control right now. But you need to disable user account control function. Double click user account and then disable user account control. After completing setup, please reboot the PC.
- System can automatically download latest web control and the new version can overwrite the previous one.
- If you want to un-install the web control, please go to start and then click run button, input `regsvr32 -u WebRec.ocx` in the pop up dialogue box or run `uninstall web.bat` to un-install. Please note, before you un-install, please close all web page, otherwise the un-installation might result in error.

## 2 Network Video Server Web Operation

### 2.1 Login and Logout

Open IE and input NVS address in the address column. For example, if your NVS IP is 192.168.1.108, then please input http:// 192.168.1.108 in IE address column. System pops up warning information to ask you whether install webrec.cab control or not. Please click yes button.

If you can't download the ActiveX file, please modify your setup as below. See 错误! 未找到引用源。 .

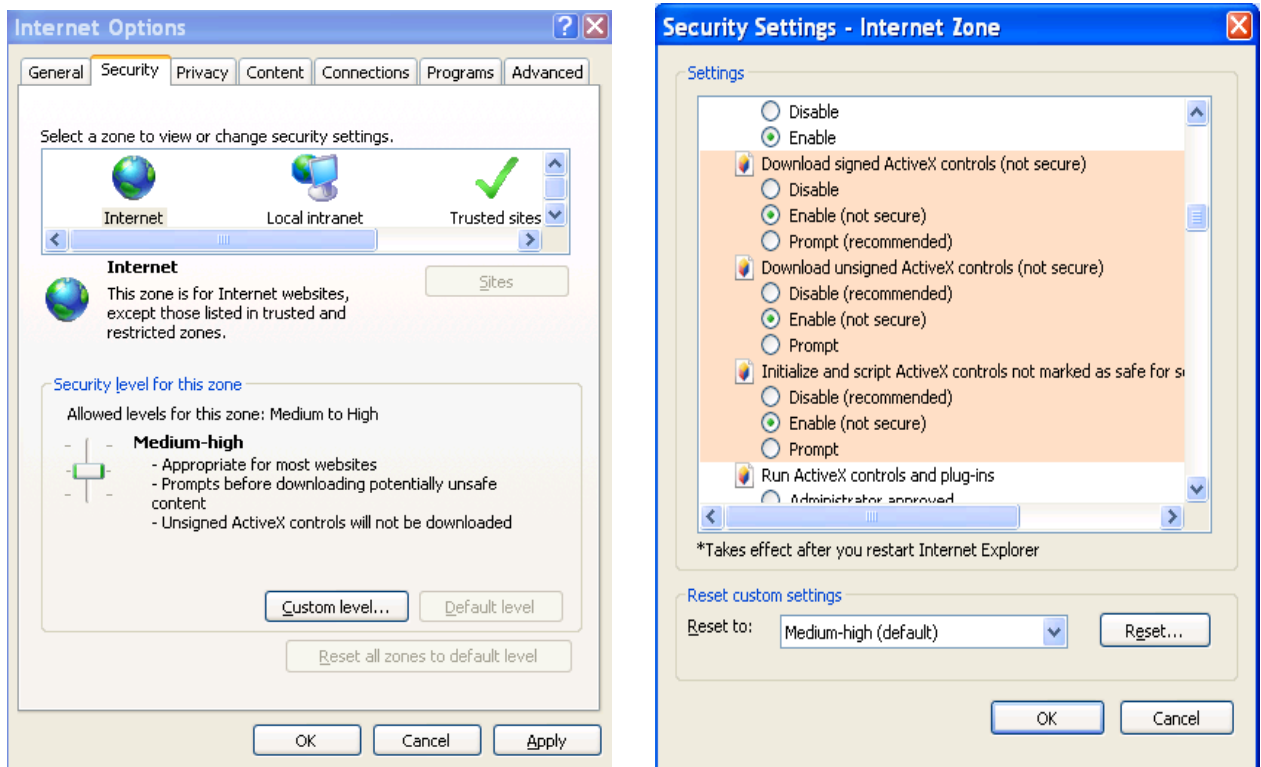


Figure 1

After installation, the interface is shown as below. See Figure 2.

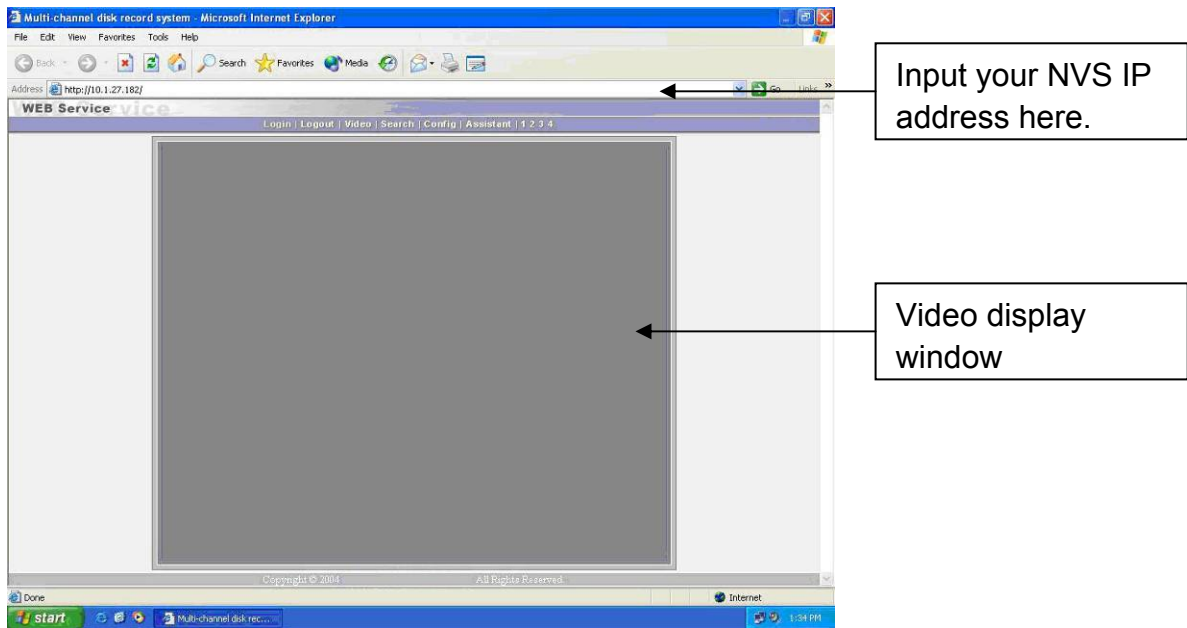


Figure 2

There are six function keys: login, logout, video, search, configuration and assistant. See Figure 3.

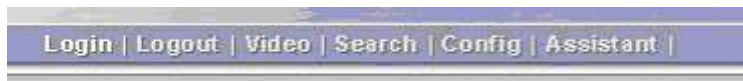


Figure 3

Click login button, the following interface pops up. See Figure 4. Please input your user name and password.

Default factory name is admin and password is admin.

Note: For security reasons, please modify your password after you first login.

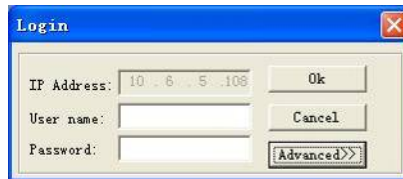


Figure 4

## 2.2 Go to Real-time Monitor Mode

There are three ways for you to go to real-time monitor mode.

- Select the channel number near the function key. See Figure 5.



Figure 5

- In Figure 5, click “video” button then select real-time monitor, click the channel number you want to view from the dropdown list.

- In the main window, right click mouse, select the channel you want to view from real-time monitor.

## 2.3 Video (Right Mouse Menu Operation)

After login, click video button or right click mouse, the interface is shown as below. See

Figure 6. The interface on your left is the right mouse menu before you go to real-time monitor mode. The interface on your right is the right mouse menu after you go to real-time monitor mode.

- Real-time monitor: choose the channel you want to view.
- Start dialogue: click here to begin audio talk.
- Multi-camera preview: System supports various video preview modes.(Need series support)
- Fluency-Realtime: Here you can select fluency and real-time priority.
- Decode quality: there are totally four levels: general, good, better and best.
- Playback control bar: here is for you to control playback.
- PTZ control: Here is for you to control PTZ movement. Before operate, please make sure you have selected right pan-tilt protocol for NVS
- Volume adjustment: here is for you to adjust PC audio volume.
- Alarm setting: here is for you to set alarm input and alarm output.
- Video setting: here is for you to set video information.
- Network data flux: here is for you to view current data flux
- Full screen: enter into full screen display mode.
- Video zoom: there are four options:40%,60%,80%,100%
- Video windows: Support 1/2/4 window display mode.

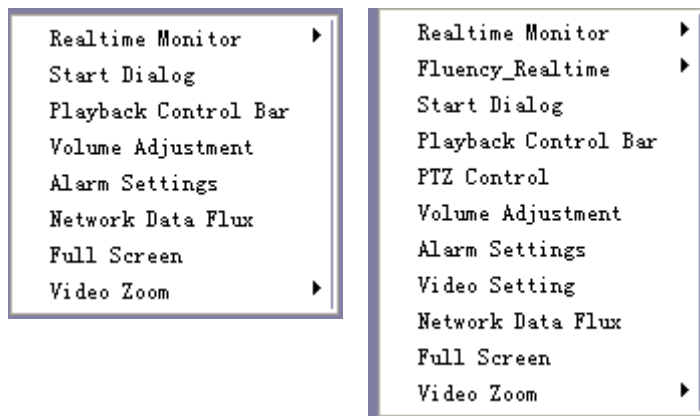


Figure 6

### 2.3.1 Real time Monitor

Here is for you to select the channel you wan to implement real-time monitor.

### 2.3.2 Multi-camera Preview

Here is for you to select view modes: 1/2/4 (According to your NVS channel amount) .

### 2.3.3 Fluency/Real-time

There are seven options for you. Three fluency level, three real-time level and one default level.

### 2.3.4 Start Dialog

Click this button to enable audio talk function.

### 2.3.5 Playback Control Bar

Here is the playback bar when you are viewing video file. See Figure 7.





- Click button , system playback the video file in PC.
- Click button , you can download the real-time monitor video or current playback video. Click button  to stop download. Default download directory is C:\download, you can modify if necessary.
- Downloaded file name is date+time+channel number. File extension name is .dav. For example, 20080227115129-1.dav, 20080227 stands for 27th Feb. 115129 stands for 11 o'clock 51 minutes 29 seconds. -1 stands for the first channel.
- Click button , you can snapshot real-time monitor video or current playback vide. Snapshot file directory is C:\Picture.



Figure 7

### 2.3.6 PTZ Control

Please click the corresponding direction arrow to adjust zoom, focus and iris. See Figure 8.

Note: before you operate this function, please make sure you have properly set PTZ protocol.

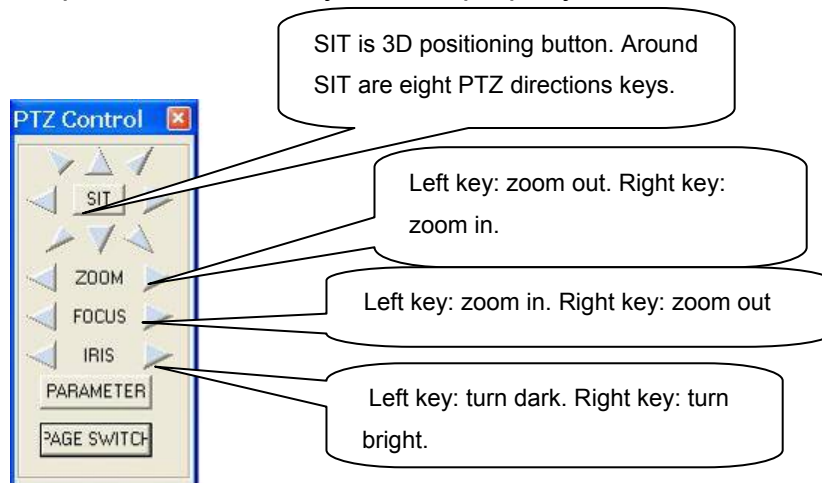


Figure 8



Click parameter button in Figure 8. The interface is shown as below. See Figure 9.

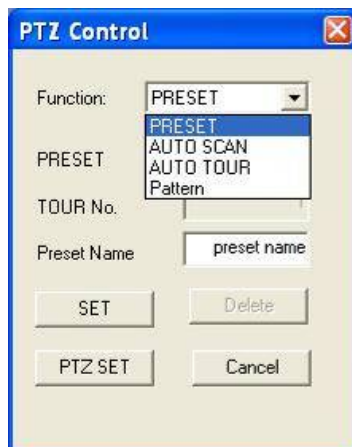


Figure 9

Here is for you to control direction operation. There are eight levels ranging from 1 to 8. Level 8 is the fastest speed.

In Figure 9, click PTZ set button. You can see the following dialogue box. See Figure 10. You can select in the dropdown list.

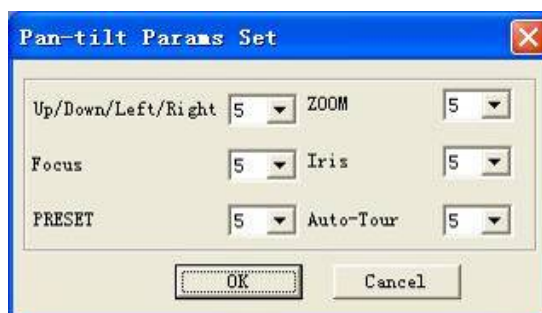


Figure 10

### 2.3.7 Volume Adjustment

Please drag volume bar to adjust pc (Not NVS) audio level. You can draw a  $\checkmark$  before Mute to turn off audio. See Figure 11.



Figure 11

### 2.3.8 Video Setting

Here you can set video information. See Figure 12.

You can set decode color and encode color. Please drag the slide bar to set and then click OK button.

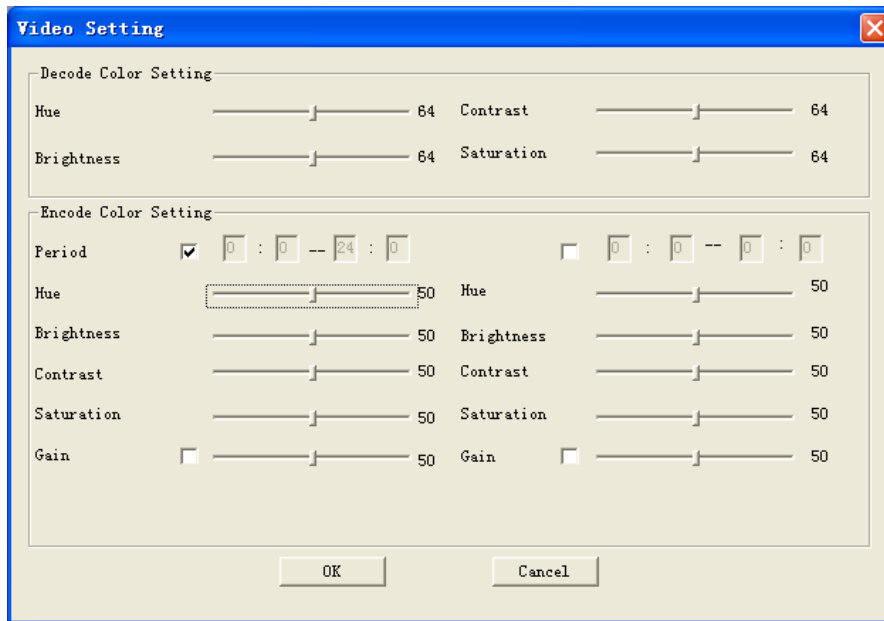


Figure 12

### 2.3.9 Alarm Setting

Click alarm setting, you can set alarm input and output. See Figure 13.

- Alarm input: you can draw a  $\checkmark$  to enable alarm input function for corresponding channel so that when there is alarm, system can prompt you.
- Relay output: after you enabled relay output for the channel, it is just like the manual alarm output.

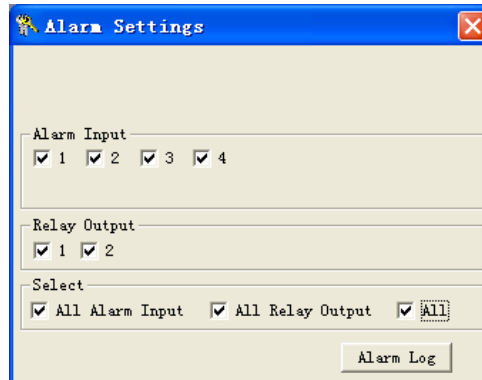


Figure 13

In Figure 13, click alarm log information. You can see the following interface. See Figure 14. Here you can select alarm type and then view corresponding alarm log.

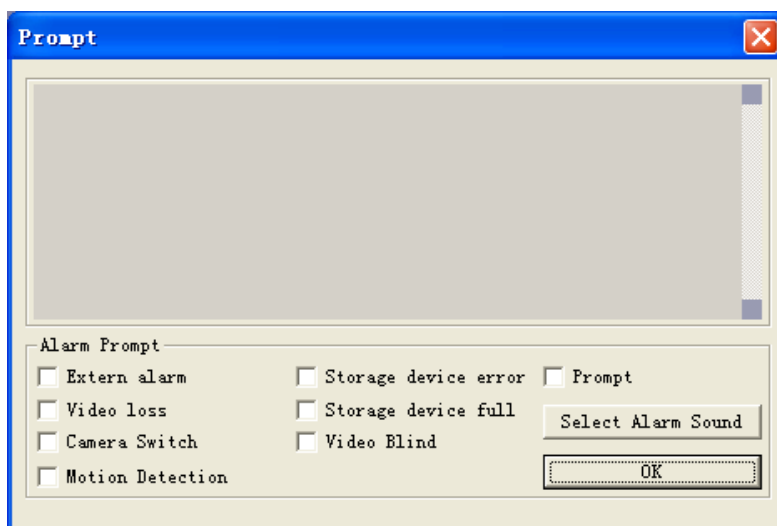


Figure 14

### 2.3.10 Network Data Flux

Here is to display the statistics of the network transmission data flux. See Figure 15.



Figure 15

### 2.3.11 Full Screen

There are two ways to view full screen monitor: One is to double click on the current monitor window directly; the other is to select Full screen in the right click menu items. During multi-window state, choose one of the windows and double click for full screen display.

### 2.3.12 Resize Video

There are four display ratios for you to choose: 40%, 60%, 80% and 100%. See Figure 16.

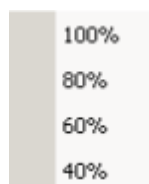


Figure 16

### 2.3.13 Video Windows

Here is for you to select display mode. See Figure 17.

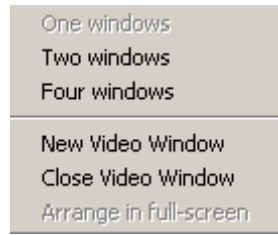


Figure 17

## 2.4 Search

Here you can select video type, channel number and time to search the file you want. Click search button, the interface is shown as below. See Figure 18.

Please use page up/down key to view the search results.

Double click file name, you can view the file and system will automatically backup the image in you installation directory.

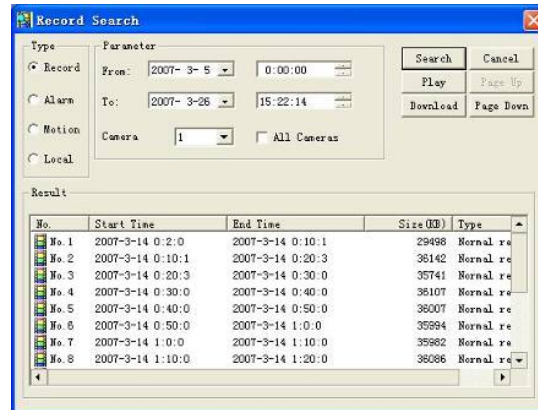


Figure 18

In the search result interface, you can select one or more files to download to your local PC.

The playback bar is shown as below. See Figure 19.

- 1: Save
- 2: Stop
- 3: Snapshot
- 4: Fast Backward
- 5: Play
- 6: Pause
- 7: Fast play
- 8: Hide
9. Full-screen
10. Close

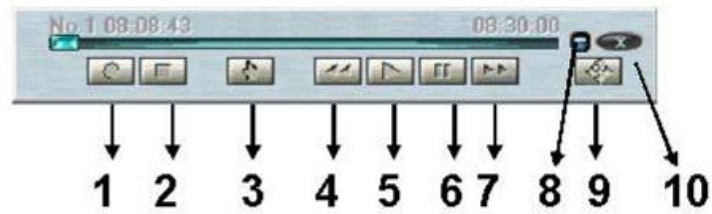


Figure 19

### 2.4.1 Download

You can select one or more files you want to download and then click down load button. System pops up a dialogue box asking you specify directory. See Figure 20.

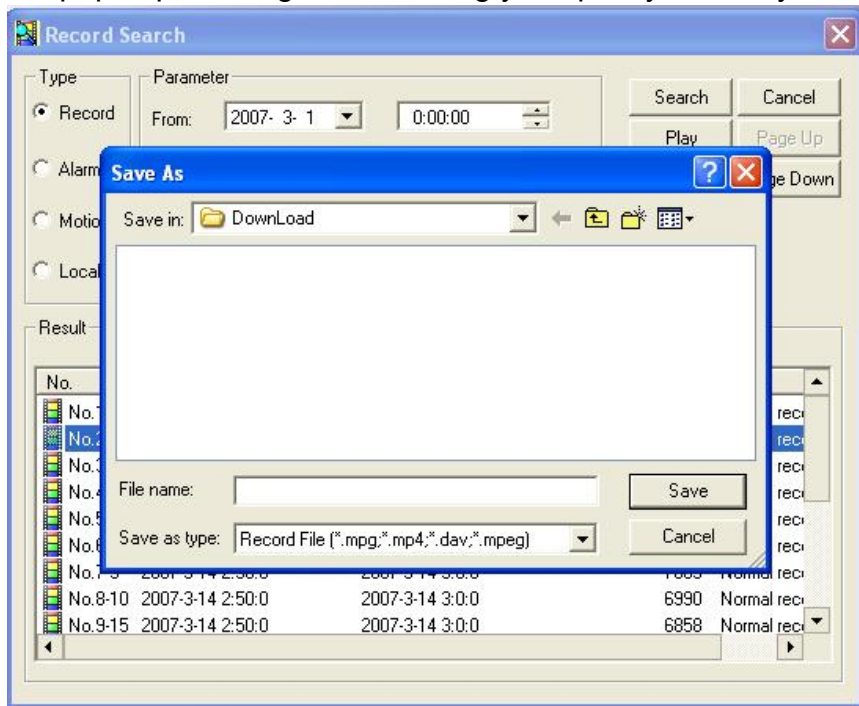


Figure 20

Then you can input file name and click save to backup file in your local pc. During the download process, there is a process bar for you reference. See Figure 21.

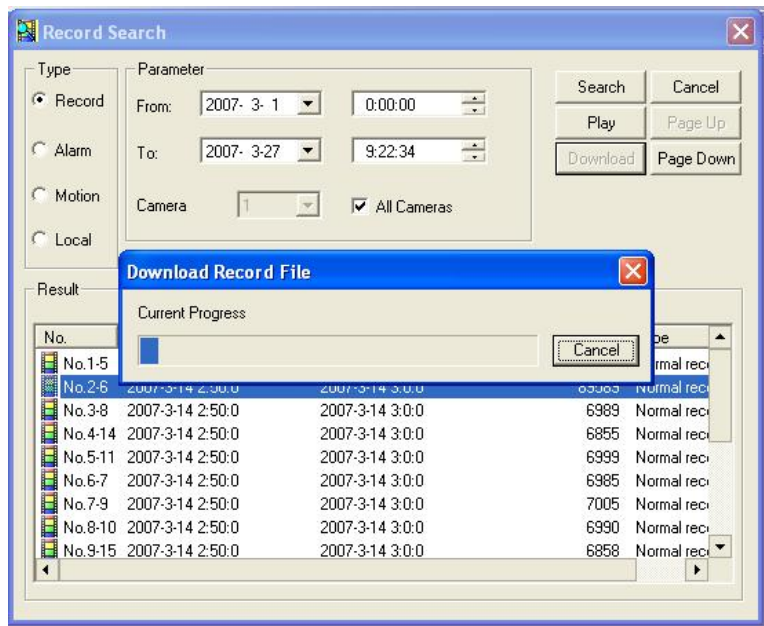


Figure 21

Download file name is usually made up of: file name +Channel N +date +time.  
File extension name is .dav.

For example: file name a-0120021205071028.mp4 means:

- 01: channel 1
- 20021205: 5<sup>th</sup> December,2002
- 071028 :7 o'clock 10 minutes 28 seconds.

## 2.5 Configure

Click configure button, there are total six function keys. See Figure 22.

- General
- Record
- Image
- Alarm
- Video detection
- Network

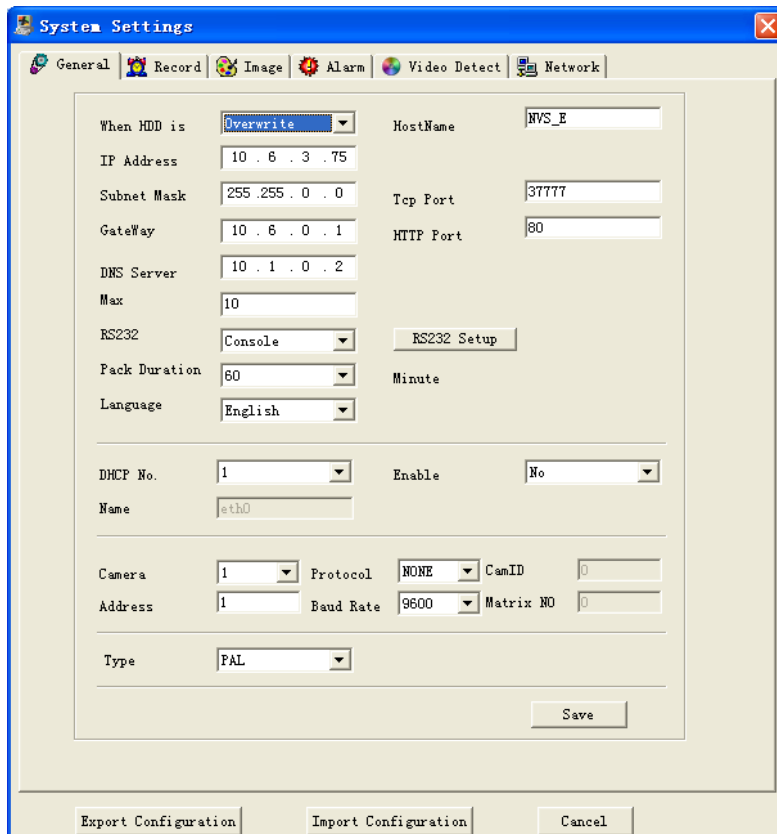


Figure 22

## 2.5.1 Load and Save Configuration

### 2.5.1.1 Save configuration

Click export configuration button in Figure 22. You can save current configuration to a directory. The file extension name is CFG. See Figure 23.

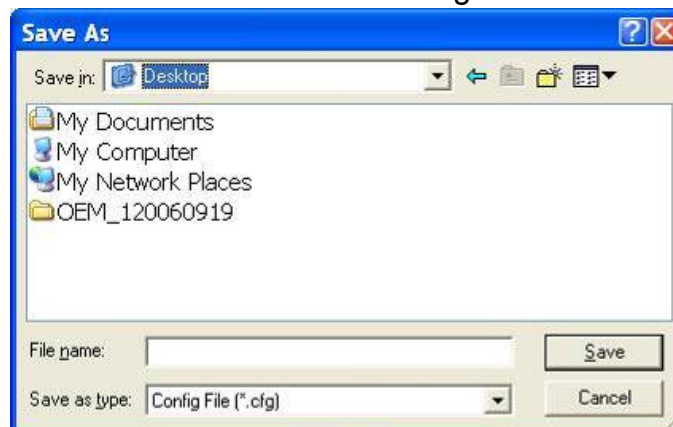


Figure 23

### 2.5.1.2 Load configuration

Click import configuration button in Figure 22. You can draw a  before checkbox to load you previously backup file. See Figure 24. Click Ok button and then select file of extension name .CFG. Now you have updated system setup.

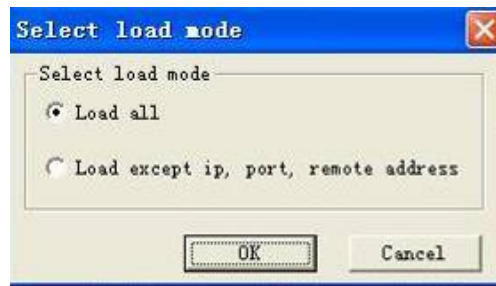


Figure 24

### 2.5.2 General

Click general button, the interface is shown as below. See Figure 25.

Here you can select file length, and choose overwrite the previous file or stop recording when disk is full.

You can select channel number, protocol, address and baud rate to control the lens or PTZ.

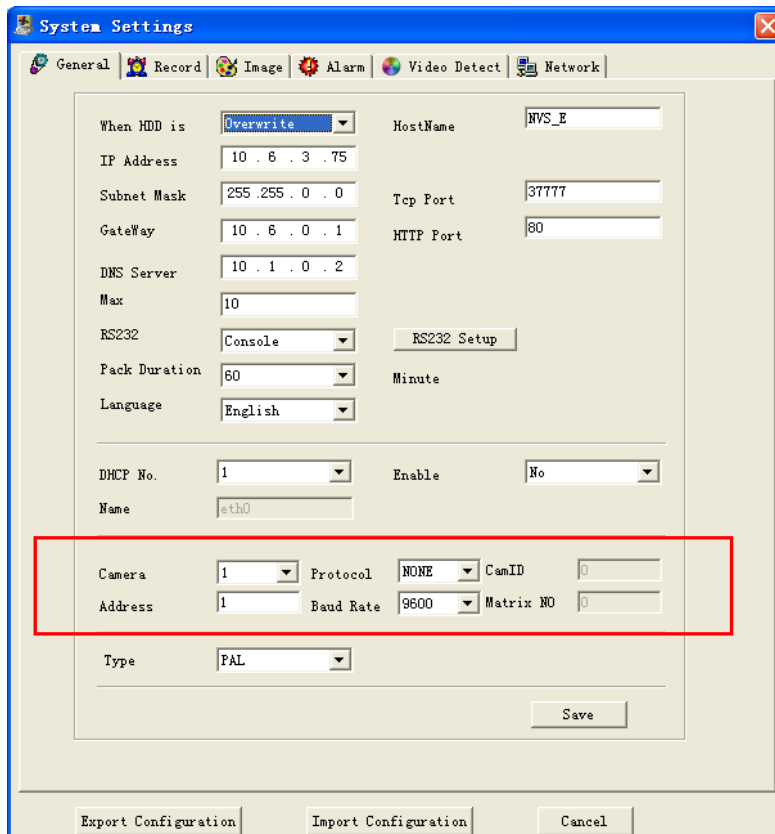


Figure 25

Click RS232 setup button, you can see an interface is shown as in Figure 26.

Here you can input baud rate, data bit, parity bit and stop bit.



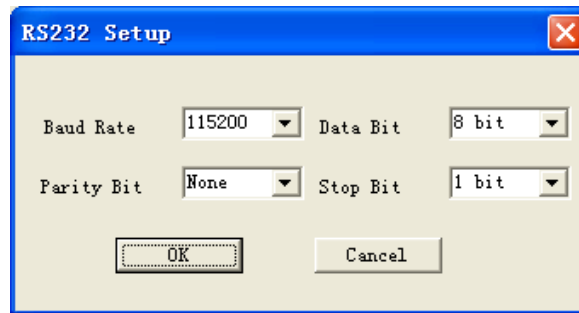


Figure 26

### 2.5.3 Record

Here is for you to set record setup. You can select several periods in different channels and on various date. See Figure 27.

Please follow the steps listed below. Here we want to set for Sunday.

- Select channel number from the dropdown.
- Click the set button after Sunday; you can see an interface is shown as in Figure 28.
- In Figure 28, please draw a  $\surd$  before the check box and then input start time and end time. You can input several periods (Max six periods) at the same time.
- After completing setup for Sunday, please repeat the above step to set for other channels.
- Click Save button, system goes back to Figure 27. Please click Save button again to exit.

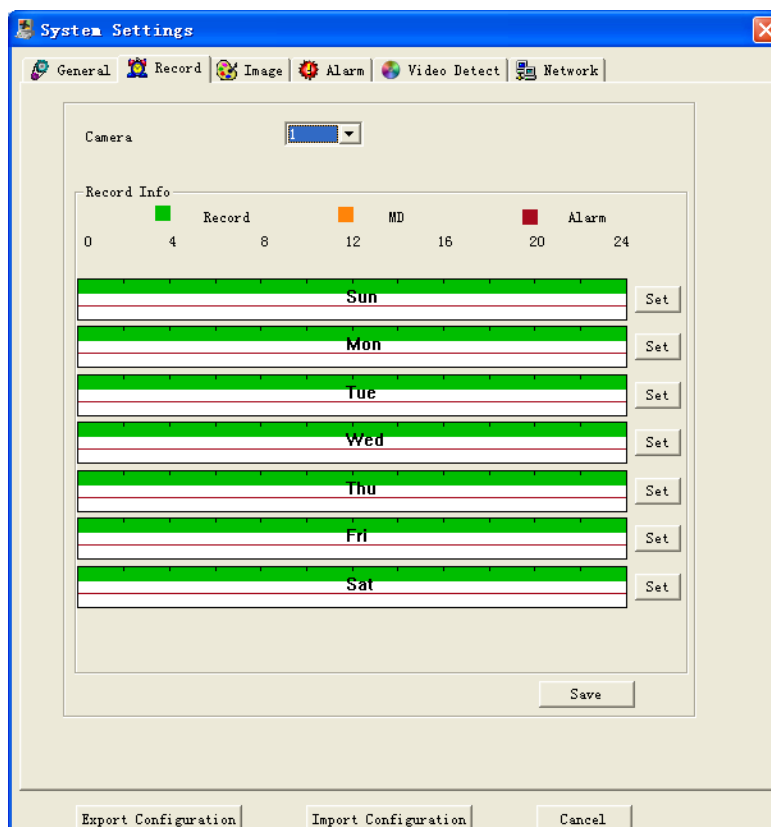


Figure 27

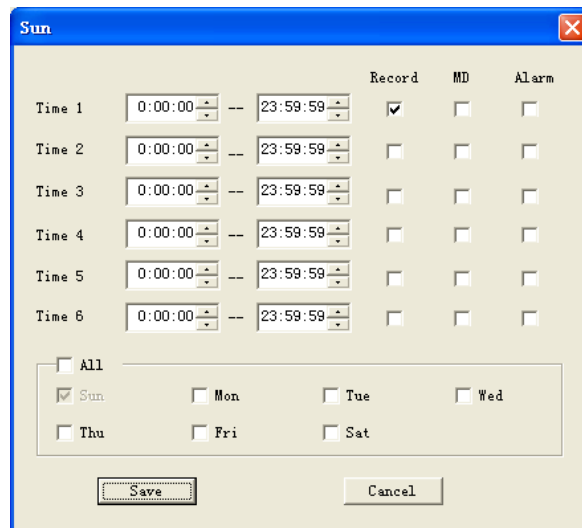


Figure 28

### 2.5.4 Image

Click image button, the interface is shown as below. See Figure 29.

Here you can select the image quality and protocols for each channel.

Here you can set encode mode, quality and protocol for each channel. You can select from the dropdown list.

- AV enable: you can draw a  $\surd$  before the check box to enable corresponding function.
- Data stream: there are two data modes: CBR/VBR.
- Resolution: there are several resolutions for you. You can select from the dropdown list such as CIF.
- Frame rate (PAL): there are several options: 1/2/3/6/12/25. (PAL.)
- Encode type; Default mode is H.264.
- Quality: There are six levels. The different data flux occupies different bandwidth and the transmission image qualities are also different. Among them, level 6 needs the widest bandwidth and can reveal the best image quality. Please note you setup here only applies for image quality in web or client end.

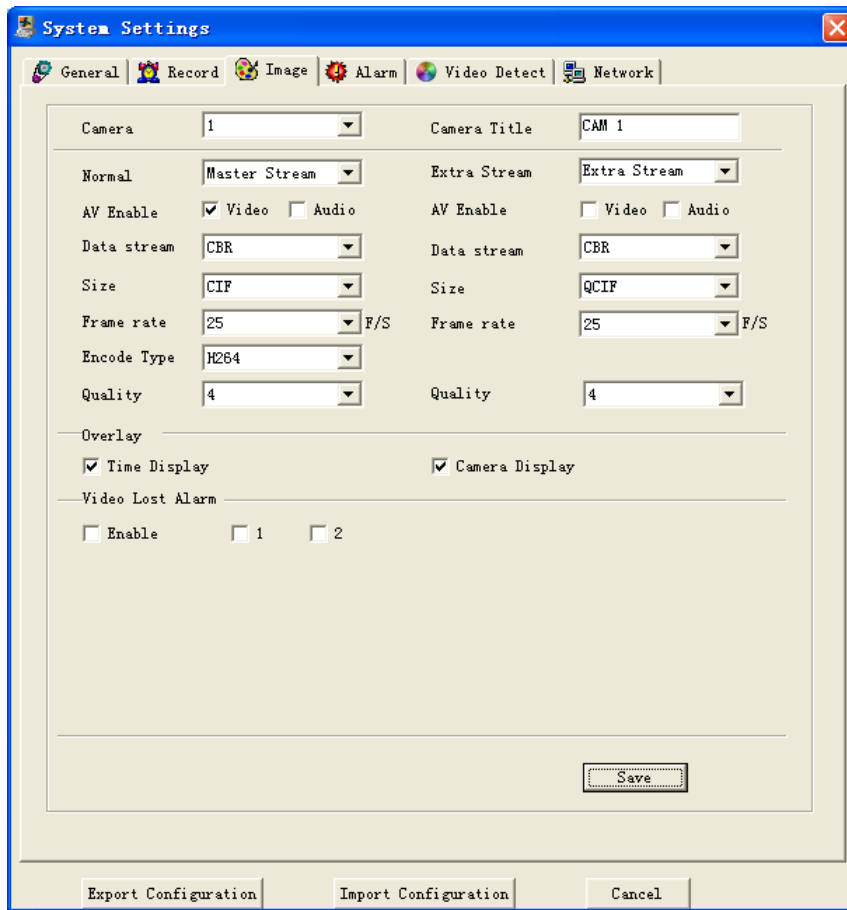


Figure 29

### 2.5.5 Alarm

Note: Please draw a  before the check box to enable current function; otherwise your setup may be invalid.

Here is for you to choose record channel and output port. See Figure 32.

- Event type: you can select local input or network input. Local input is referring to local alarm input and network input is referring to alarm signal from network.
- Device type: There are two alarm types: normal open or normal close. (voltage output mode)
- Work sheet: Click set button near the work sheet, you can see an interface is shown as in Figure 30. You can click set button near the corresponding date to set time periods. .

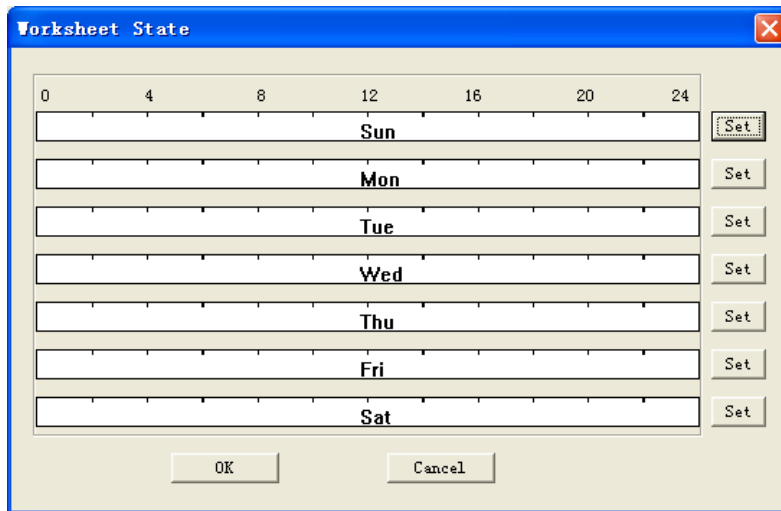


Figure 30

- Alarm output: Alarm activation output port (multiple choices). When alarm occurs system can activate corresponding alarm output device, among which, the 3<sup>rd</sup> channel is controllable 12V output.
- Alarm output delay time: system will delay the alarm for specified period after alarm completes. The value range from 10s to 300s.
- Prompt: system can pop up alarm information in local host pc screen.
- Email: Once you enable this function, system will send out email to you when alarm occurs.
- Record: select the corresponding record channel(s) (Multiple choices.). System can automatically activate corresponding channels to record when alarm occurs.
- PTZ activation: system can activate PTZ operation when alarm occurs, such as activated channel 1 to go to preset X. Click set button near the PTZ activation, you can see an interface is shown as in Figure 31.

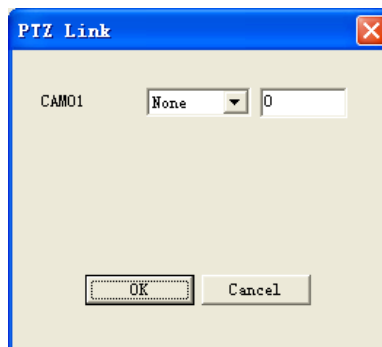


Figure 31

- Record delay time: System delay the specified time to record when motion detection stops. The value ranges from 10s to 300s.
- Tour: The selected channel begins one-window tour when alarm occurs.

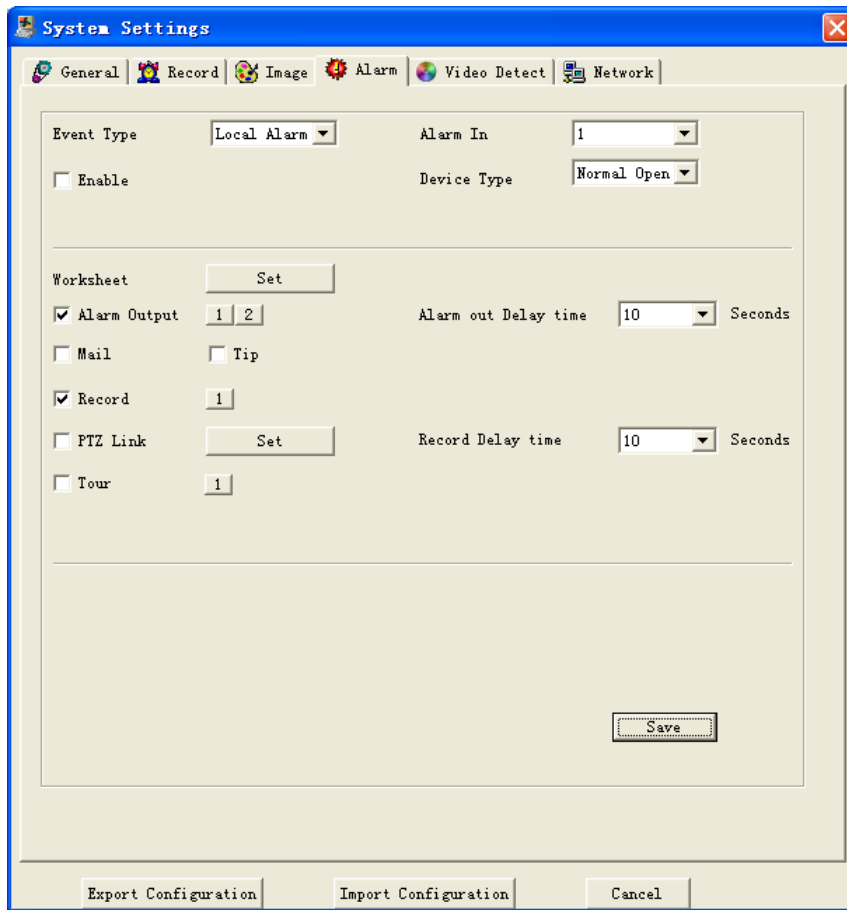


Figure 32

### 2.5.6 Video Detection

Note: Please draw a  $\checkmark$  before the check box to enable current function; otherwise your setup may be invalid.

Motion detection will take effect exclude the time you set to schedule recording. See Figure 35.

- Event type: Here you can select detection type: motion detection, video loss detection and camera mask detection.
- Channel: select the channel to set motion detection.
- Enable: you can draw a  $\checkmark$  before the check box to enable current function.
- Area: click set button, you can see an interface is shown as below. See Figure 33. There are total 192(16\*12) small zones. Please click and drag mouse to set motion detection zone. Right click mouse you can exit.

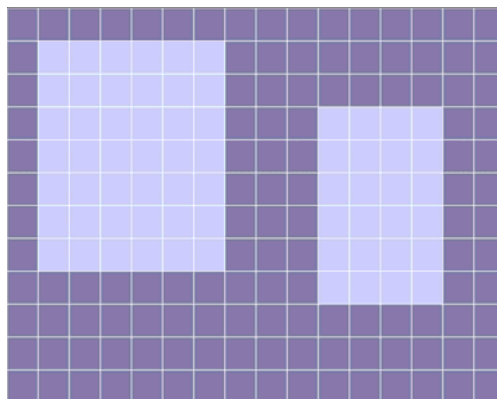


Figure 33

- Sensitivity: There are six levels. The sixth level has the highest sensitivity.
- Worksheet: Click set button near the work sheet, you can see an interface is shown as in Figure 34. You can click set button near the corresponding date to set time periods. .

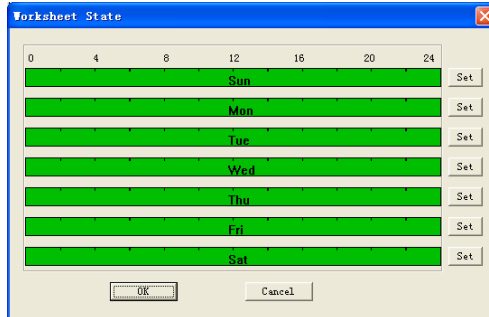


Figure 34

- Alarm output: Activated the external device when motion detection occurs.
- Alarm output delay time: system will delay the alarm for specified period after alarm completes. The value range from 10s to 300s.
- Prompt: system can pop up alarm information in local host screen.
- Email: Once you enable this function, system will send out email to client when alarm occurs.
- Record: select the corresponding record channel(s)(Multiple choices.). System can automatically activate corresponding channels to record when alarm occurs.
- Record delay time: System delay the specified time to record when motion detection stops. The value ranges from 10s to 300s.
- Tour: The selected channel begins one-window tour when alarm occurs.

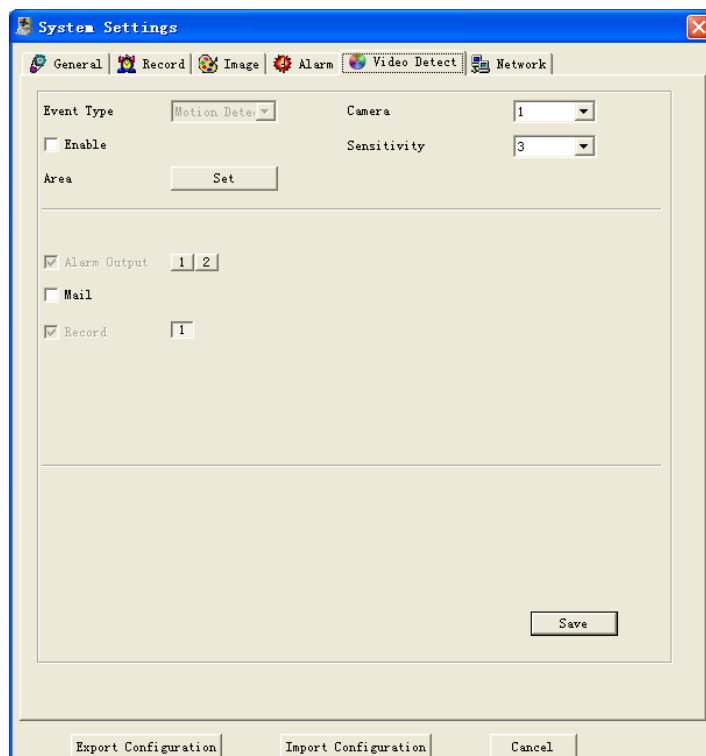


Figure 35

## 2.5.7 Network

Network interface is shown as in Figure 40.

### 2.5.7.1 PPPoE Connection

Set PPPOE as on, and then please input “PPPoE name” and “PPPoE password” you get from your ISP (Internet service provider).

After saving it, you need to restart to activate your configuration.

After rebooting, IP camera will connect to internet automatically. The IP in the PPPoE IP is the dynamic value.

### 2.5.7.2 Web visit via PPPoE

There are two ways.

#### a. visit through current IP

After IP camera connected with Internet by PPPoE, please get your device’s current IP. Now you can visit this IP camera via this IP.

#### b. Visit via DNS

You need a PC of fixed IP in the internet and there is the DDNS software running in this PC. In other words, this PC is a DNS (domain name server).

In network DDNS, input your PPPoE name you get from you IPS and server IP (PC with DDNS ). Click save and then reboot system.

Click save button, system prompts for rebooting to get all setup activated.

After rebooting, open IE and input as below:

http: //(DDNS server IP)/(virtual directory name)/webtest.htm

e.g.: http: //10.6.2.85/NVS\_DDNS/webtest.htm.)

Now you can open DDNSServer web search page.

### 2.5.7.3 FTP

You need to download or buy FTP service tool (such as Ser-U FTP SERVER) to establish FTP service.

Please install Ser-U FTP SERVER first. From “start” -> “program” -> Serv-U FTP Server -> Serv-U Administrator. Now you can set user password and FTP folder.

Please note you need to grant write right to FTP upload user. See Figure 36.

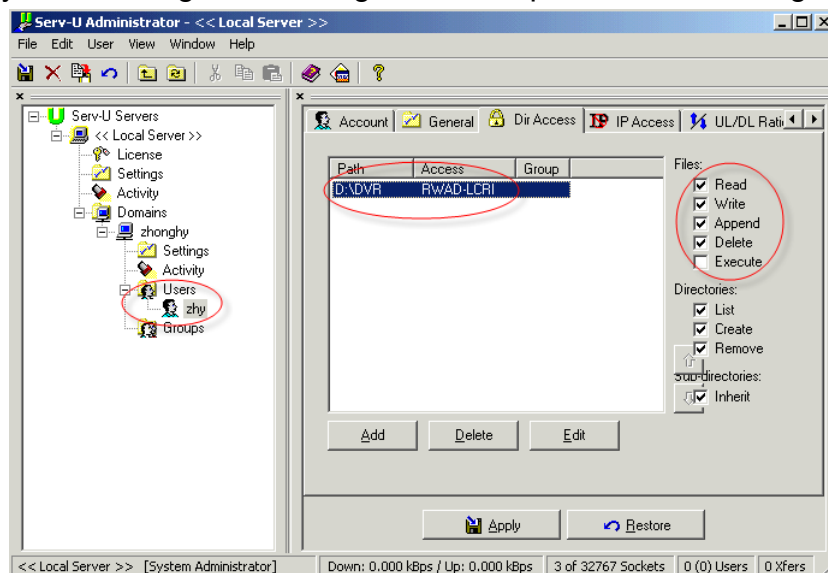


Figure 36

You can use a PC or FTP login tool to test setup is right or not. For example, you can login user ZHY to [FTP://10.10.7.7](ftp://10.10.7.7) and then test it can modify or delete folder or not. See Figure 37.

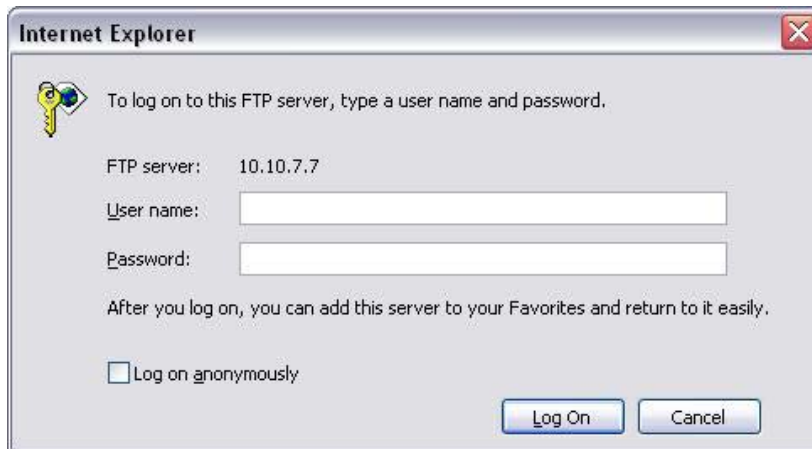


Figure 37

System also supports upload multiple IP cameras to one FTP server. You can create multiple folders under this FTP.

Enable FTP function. Now IP camera can upload alarm and motion detection video files. Please current upload channel shall be in motion detection or alarm record status, that is to say, IP camera local-end shall be in the corresponding type and has the content.

Set FTP server address, port and dir name. See Figure 38.

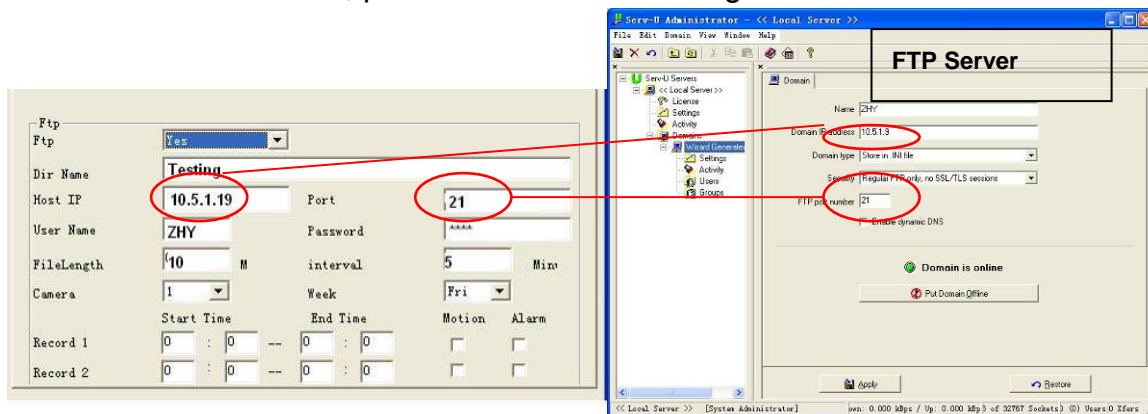


Figure 38

- File length: upload file length. When setup is larger than the actual file length, system will upload the whole file. When setup here is smaller than the actual file length, system only uploads the set length and auto ignore the left section.
- Interval: in each channel, system only uploads the first video file in accordance with video type (alarm/motion detection) during the same period. For example, when interval value is 5 minutes, system only uploads the first motion detection



or alarm file in each 5-minute. When interval value is 0, system uploads all corresponding files.

- Period 1 and period 2: you can set two periods for one each channel.
- System file name is shown as in Figure 39.



Figure 39

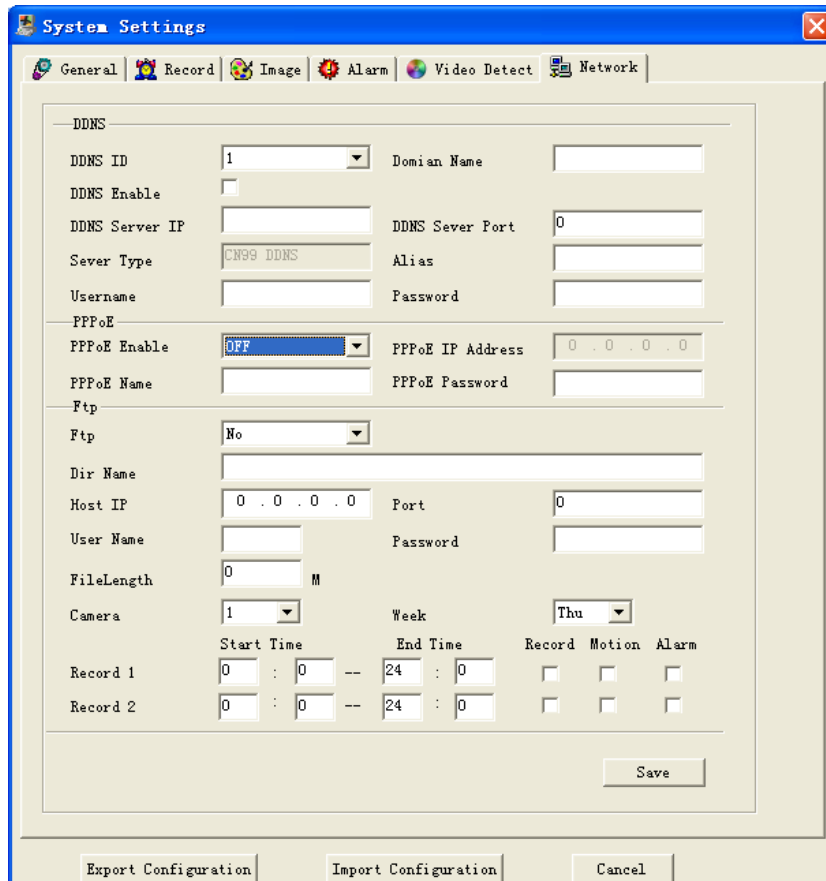


Figure 40

## 2.6 Assistant

Click assistant setting, the interface is shown as below. See Figure 41. There are thirteen function keys.

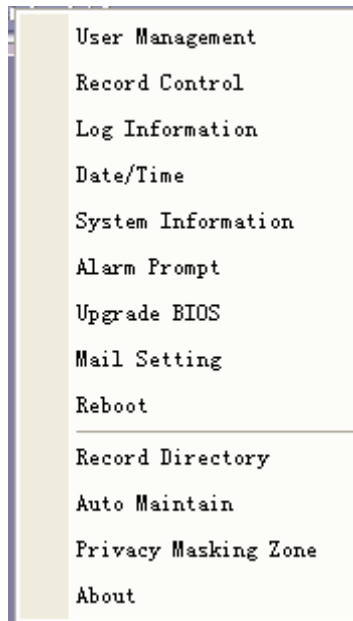


Figure 41

### 2.6.1 User Management

Here is for you to manage users and user groups. See Figure 42. You can click '+' to see the whole group list.

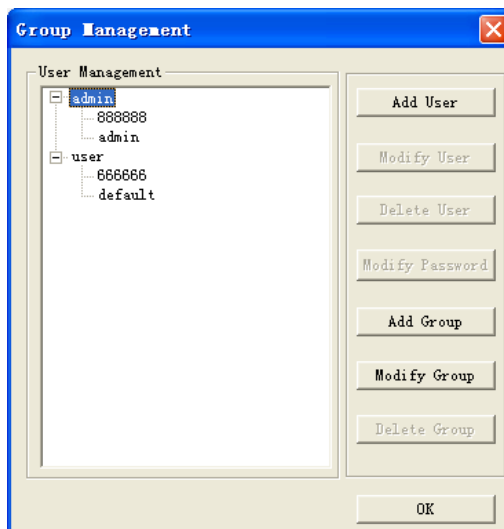


Figure 42

#### 2.6.1.1 Add Group

Click "add group" button to input group name. See Figure 43.

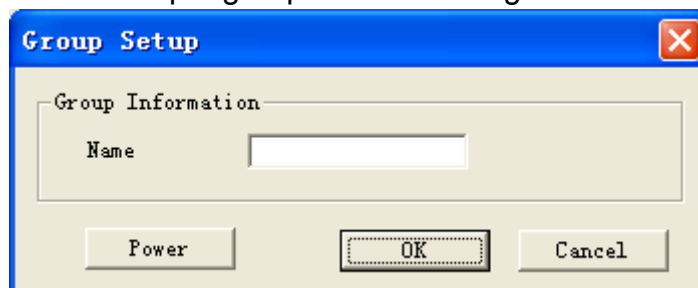


Figure 43

Click “Power” button to set group power.  
Click “Save” button to save configuration

#### 2.6.1.2 Delete Group

Click “Delete Group” button, the interface is shown as in Figure 44.

**Note: You can only delete empty group (E.g.: There is no user in current group).**

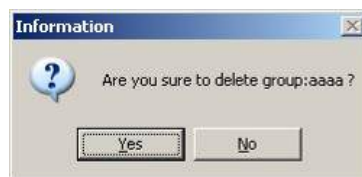


Figure 44

#### 2.6.1.3 Modify Group

Click modify group, the interface is shown as in Figure 45. You can modify group name and then click “power” button to set proper right for the whole group.

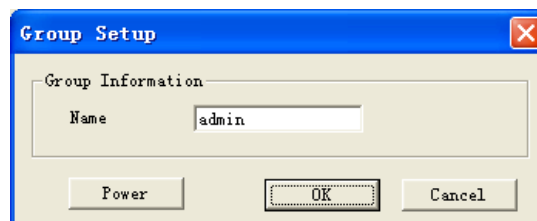


Figure 45

#### 2.6.1.4 Add User

Click “Add User” button the interface is shown as in Figure 46.

Input user name, password, and then input password again to confirm.

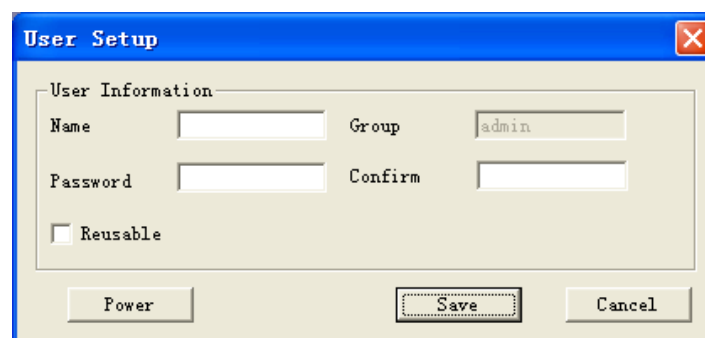


Figure 46

#### 2.6.1.5 Power

When you add new user or new group (such as in Figure 43, Figure 46), click “power” button, the interface is shown as in Figure 47. Here is for you to set user’s power.

There are three power groups: main control power/monitor power/playback power. You can draw a  $\checkmark$  before the checkbox to enable corresponding function.

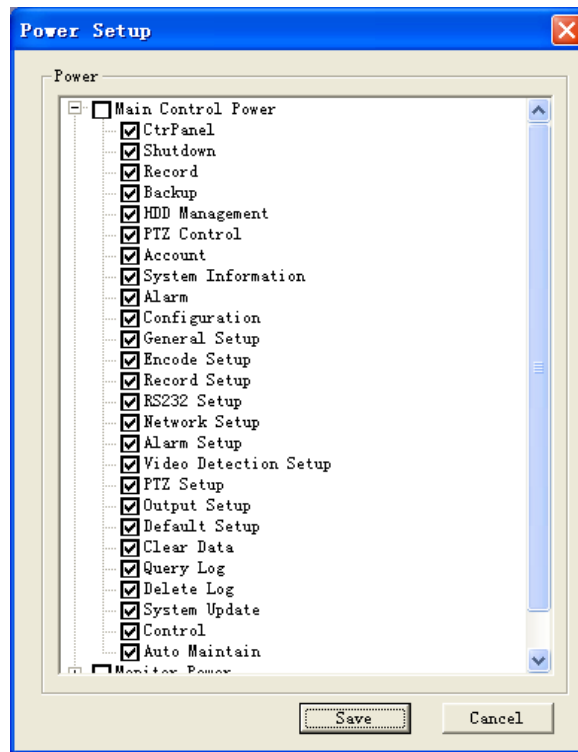


Figure 47

#### 2.6.1.6 Modify user

Select one user and then click modify user button, the interface is shown as in Figure 48. Here you can modify user name.

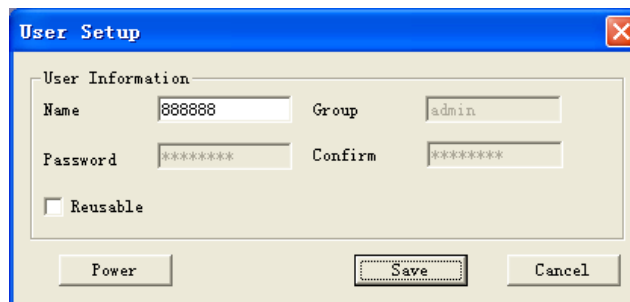


Figure 48

#### 2.6.1.7 Delete user

Select one user and then click “delete user” button, you can see the following dialogue box. See Figure 49. Click “Yes” to delete current user.

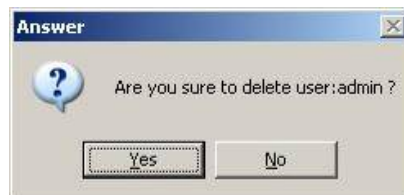


Figure 49

### 2.6.2 Record Control

Click “record control” button the interface is shown as below. See Figure 50. You can select mode for each channel.



Figure 50

### 2.6.3 Log Information

System can automatically backup all operation in log information.

You can click this button to view detailed information. See Figure 51.

Once you click save log button, the log files will be automatically saved in the root directory such as "C:\ as a text file (e.g.: C:\ 10.1.27.193-log.txt)

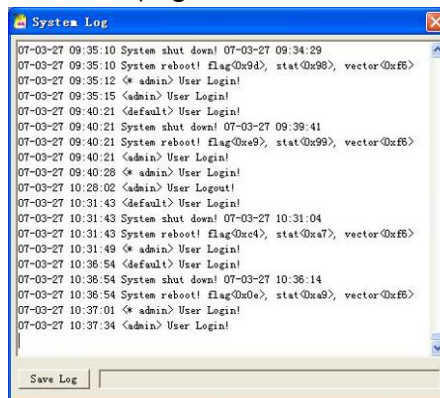


Figure 51

### 2.6.4 Date and Time

Here you can modify system date and time. See Figure 52.

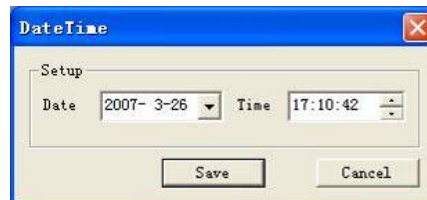


Figure 52

### 2.6.5 System Information

Here you can view basic information of the system. See Figure 53.

Here you can

- Turn on/off audio
- Close or open auto tour monitoring
- Set interval

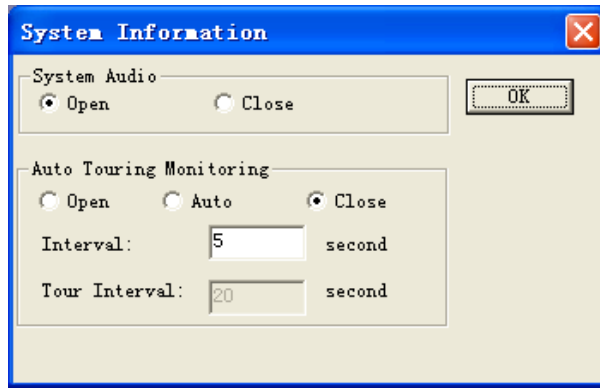


Figure 53

### 2.6.6 Alarm Prompt

Here is for you to choose different alarm audios. See Figure 54.

Here you can select system AlarmSound.wav file from folder system32 as your audio sound.

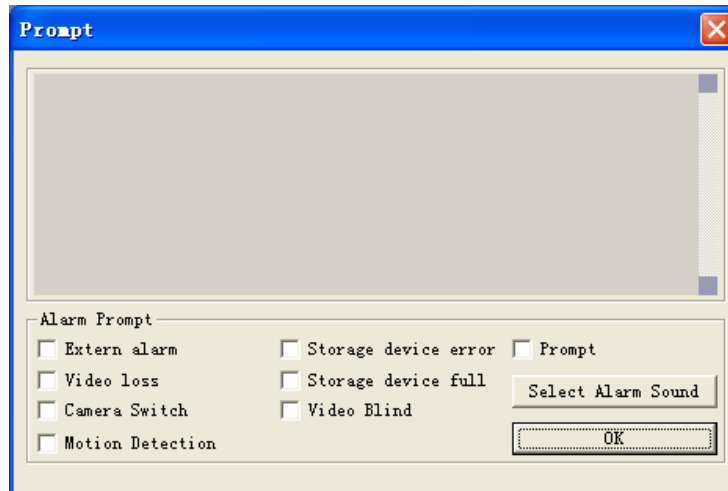


Figure 54

### 2.6.7 Upgrade BIOS

Click upgrade BIOS button, the interface is shown as below. See Figure 55.

Open the BIOS file (You can get from our local engineer or download from our web service) and then click send BIOS button.

During the upgrade process, there is a process bar for your reference.

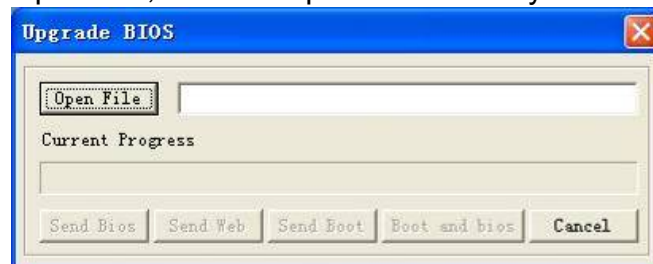
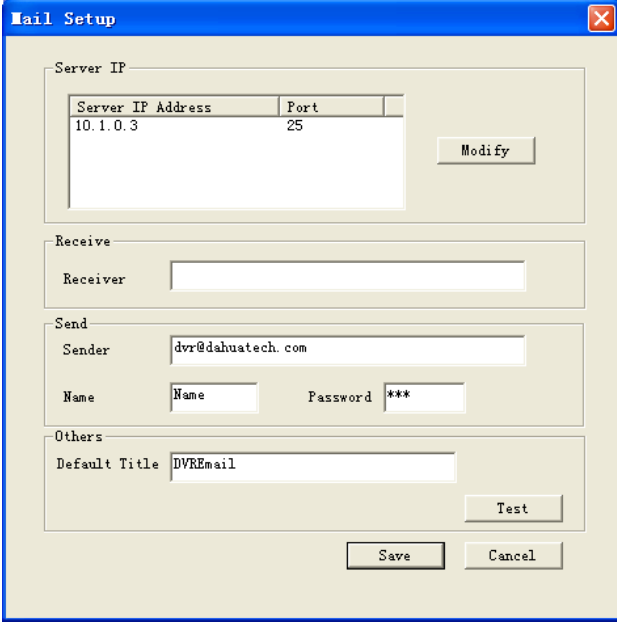


Figure 55

## 2.6.8 Mail Setting

In the assistant setup, select email function. You can see the interface is shown as in Figure 56.

Here you can input server IP, receiver, email title and etc.



The 'Mail Setup' dialog box contains the following sections:

- Server IP:** A table with columns 'Server IP Address' and 'Port'. The first row contains '10.1.0.3' and '25'. A 'Modify' button is to the right.
- Receive:** A 'Receiver' text input field.
- Send:** A 'Sender' text input field containing 'dvr@dhuatech.com'. Below it are 'Name' and 'Password' text input fields, with '\*\*\*' in the password field.
- Others:** A 'Default Title' text input field containing 'DVREmail'. A 'Test' button is to the right.

At the bottom of the dialog are 'Save' and 'Cancel' buttons.

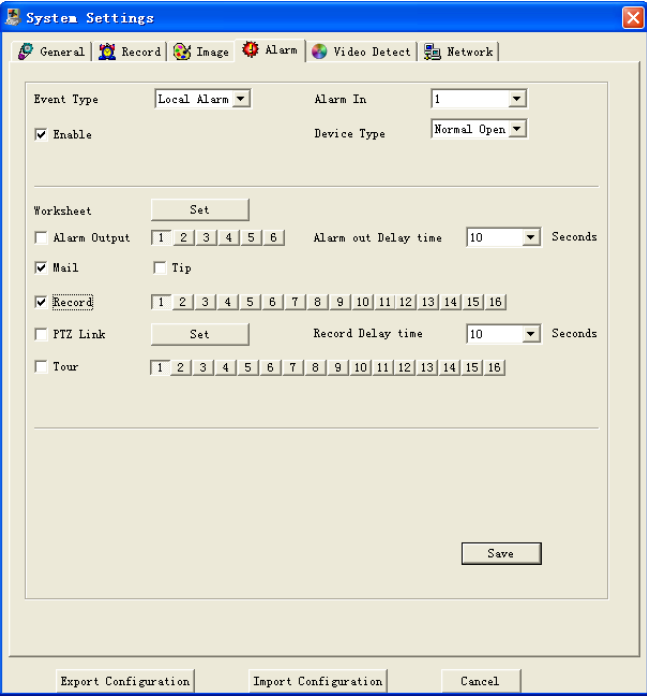
Figure 56

Now you can set alarm information for future upload.

For motion detection, you can enable email function in detection interface.

For external alarm, you can enable email function in alarm setup interface.

See



The 'System Settings' dialog box has tabs for 'General', 'Record', 'Image', 'Alarm', 'Video Detect', and 'Network'. The 'Alarm' tab is active.

Event Type: Local Alarm (dropdown) | Alarm In: 1 (dropdown)

Enable | Device Type: Normal Open (dropdown)

Worksheet: Set (button)

Alarm Output | 1 2 3 4 5 6 | Alarm out Delay time: 10 (dropdown) Seconds

Mail |  Tip

Record | 1 2 3 4 5 6 7 8 9 10 11 12 13 14 15 16 | Record Delay time: 10 (dropdown) Seconds

PTZ Link | Set (button)

Tour | 1 2 3 4 5 6 7 8 9 10 11 12 13 14 15 16

Save (button)

Export Configuration | Import Configuration | Cancel (button)

Figure 57.

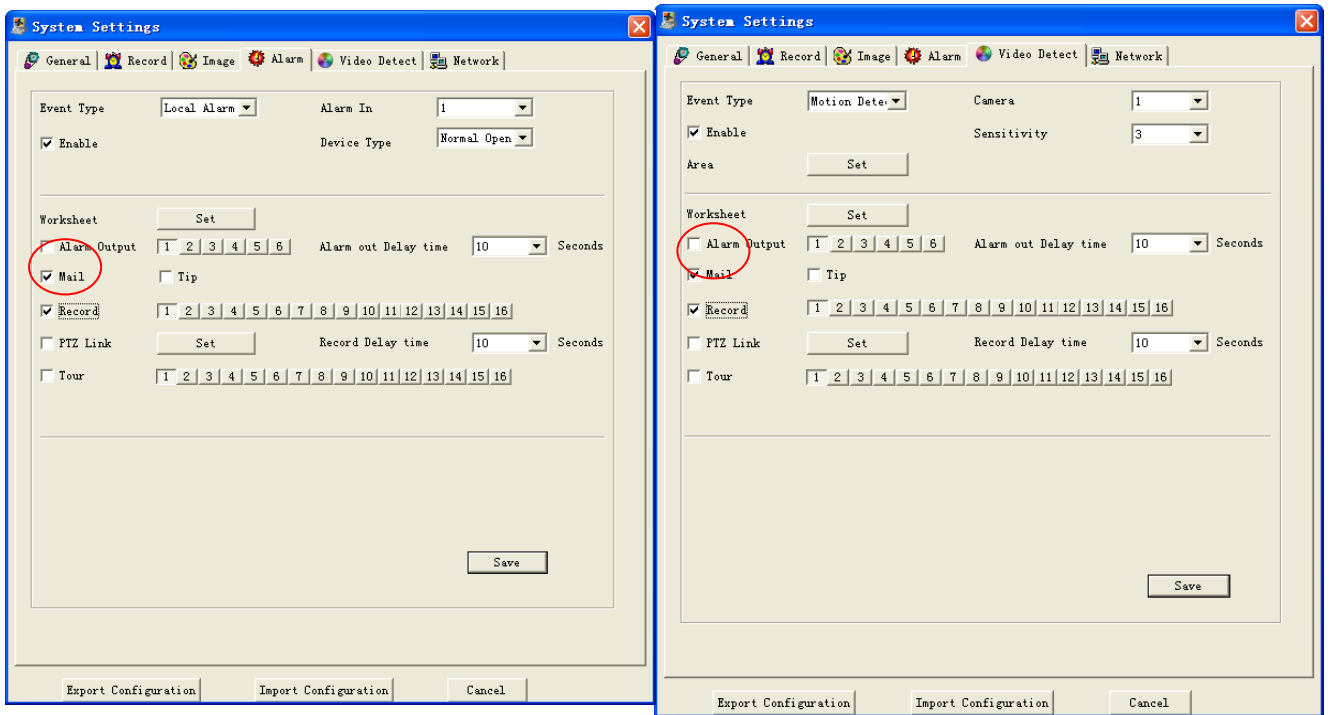


Figure 57

After setup, you can receive email from client end.

The email content is shown as below:

Alarm Matter: Email Test...  
 AlarmIn Channel: 255  
 Alarm Start Date(Day/Month/Year Hour:Minute:Second): 12/12/2006 16:30:20  
 Alarm Device Name: localhost  
 Mail\_Sender IP : 10.6.3.8

In motion detection mode, you can set email function (Enable/disable) for each channel.

The email content is shown as below.

Alarm Matter: Motion Detect  
 AlarmIn Channel: 2  
 Alarm Start Date(Day/Month/Year Hour:Minute:Second): 12/12/2006 15:5:36  
 Alarm Device Name: localhost  
 Mail\_Sender IP : 10.6.3.9

### 2.6.9 Reboot

Click reboot button, system pops up a warning dialogue box to alert you. See Figure 58.

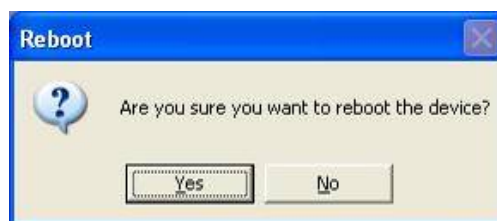


Figure 58



### 2.6.10 Record Directory

Path interface is shown as in Figure 59.  
Here is for you to modify save path in the pc.

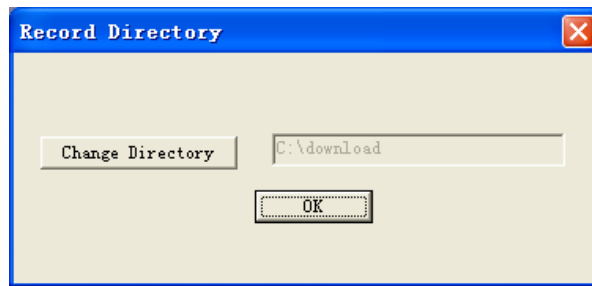


Figure 59

### 2.6.11 Auto Maintenance

Here allow you to set auto maintenance information. See Figure 60.  
You can set auto reboot time and auto delete file tile from the dropdown list

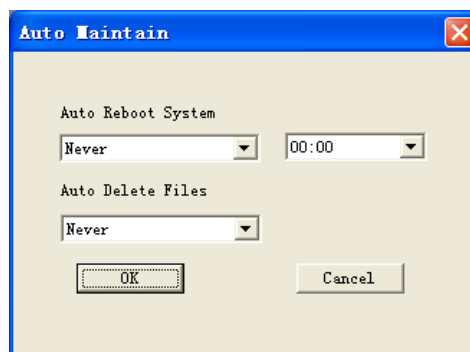


Figure 60

### 2.6.12 Privacy Mask Zone

Click privacy mask zone item, you can see an interface is shown as in Figure 61.  
Here you can set a privacy mask zone.



Figure 61

### 2.6.13 About

Here is for you to view basic system information. See Figure 62.

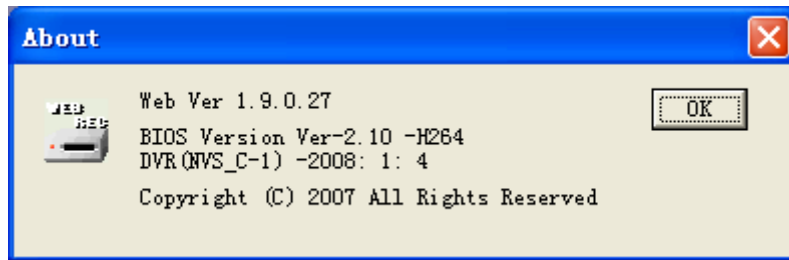


Figure 62

## 2.7 Un-install Web Control

There are two ways for you to un-install web control.

- From start, click run and then input order `regsvr32 -u WebRec.ocx`.
- Use web un-install tool “uninstall web.bat” to un-install web control.