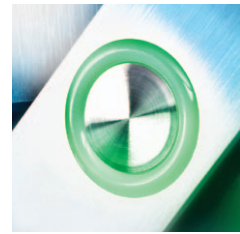










ACCESS CONTROL



MIFARE® PLUS S 2K SERIES

For use with O2S Reader series



	Part Number	Type	Technology	Prog. Mem. Size	Form Factor	Format	ID Printing
	AT-P2S-000-0000	Not Programmed	MIFARE Plus S	2K	ISO Card (PVC)	Not Formatted	No ID Printed
	RT-P2S-26A-3000	O2S – Rosslare Keys	MIFARE Plus S	2K	ISO Card (PVC)	Wiegand 26-Bit	Inkjet – FC & Card ID (decimal)
	RT-P2S-38A-3000	O2S – Rosslare Keys	MIFARE Plus S	2K	ISO Card (PVC)	Wiegand 38-Bit (Rosslare Proprietary)	Inkjet – FC & Card ID (decimal)
	AT-P2K-000-0SB0	Not Programmed	MIFARE Plus S	2K	Key Fob	Not Formatted	No ID Printed
	RT-P2K-26A-7SB0	O2S – Rosslare Keys	MIFARE Plus S	2K	Key Fob	Wiegand 26-Bit	Laser Engraving – FC & Card ID (decimal)
	RT-P2K-38A-7SB0	O2S – Rosslare Keys	MIFARE Plus S	2K	Key Fob	Wiegand 38-Bit (Rosslare Proprietary)	Laser Engraving – FC & Card ID (decimal)
	AT-P2K-000-0RB0	Not Programmed	MIFARE Plus S	2K	Key Fob	Not Formatted	No ID Printed
	RT-P2K-26A-7RB0	O2S – Rosslare Keys	MIFARE Plus S	2K	Key Fob	Wiegand 26-Bit	Laser Engraving – FC & Card ID (decimal)
	RT-P2K-38A-7RB0	O2S – Rosslare Keys	MIFARE Plus S	2K	Key Fob	Wiegand 38-Bit (Rosslare Proprietary)	Laser Engraving – FC & Card ID (decimal)
	AT-P2K-000-0TB0	Not Programmed	MIFARE Plus S	2K	Key Fob	Not Formatted	No ID Printed
	RT-P2K-26A-7TB0	O2S – Rosslare Keys	MIFARE Plus S	2K	Key Fob	Wiegand 26-Bit	Laser Engraving – FC & Card ID (decimal)
	RT-P2K-38A-7TB0	O2S – Rosslare Keys	MIFARE Plus S	2K	Key Fob	Wiegand 38-Bit (Rosslare Proprietary)	Laser Engraving – FC & Card ID (decimal)