



Cerberus®

Alarm buttons

AT11W
AT12W
FAT7

-
- For discreet alarm actuation in the event of hold-up
 - For the activation of cameras if counterfeit money is passed
 - Identification of actuated alarm buttons by means of paper seal
 - Visual signalling of alarm actuation
 - Models for recessed and surface mounting in the counter top as well as in the counter support

Alarm buttons AT11W, AT12W

For installation at the entrance to banks etc. in a desk or in a till.

- Elegant design which conforms with the usual counters and yet is clearly recognizable as an alarm button.
- Alarm button with one break contact each for the connection of an alarm and tamper line.
- White paper disc printed with „ALARM“ or „ALARM/CERBERUS“ which must be punctured to actuate an alarm. It can be replaced without the use of tools.
- LED indicator with self-hold for the signalling of alarm actuation or for acknowledgement.
- The alarm button is protected against unauthorized opening by cover switch.

AT11W

Surface-mounted and counter models. Two-section white-beige plastic housing.

AT12W

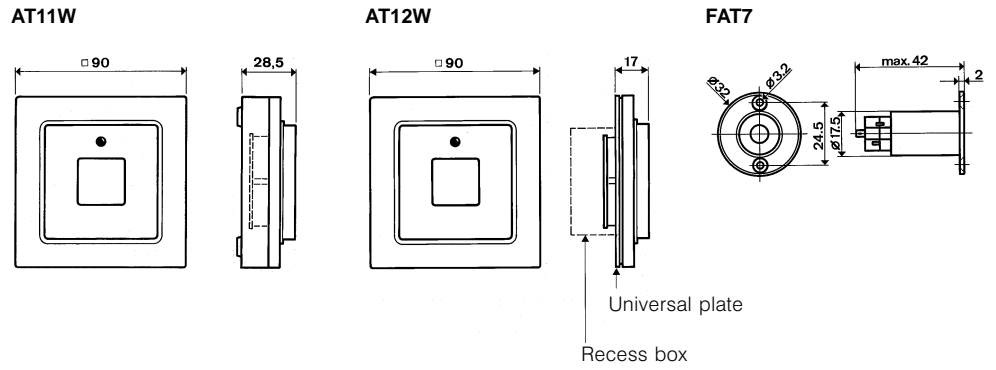
Recess-mounted model for installation in standard trade recess boxes, diameter 55mm, as well as in recess boxes UPR7. Colour white-beige. An universal plate is supplied with the unit.

Alarm button FAT7

For installation in desks, counters etc.

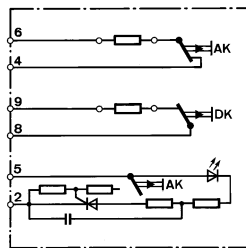
- Button with make and break contacts built into an anodized rosette.
- A 12V or 24V incandescent lamp can be inserted in the button to signal alarm actuation or acknowledgement.
- Replaceable with white paper disc printed with the word „ALARM“.

Dimensions

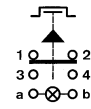


Connection diagram

AT11W, AT12W



FAT7



Technical data

Contact load	
- AT11W, AT12W	<30V _{dc} /25mA
- FAT7	<24V _{dc} /1A

Details for ordering

	Type	Part no	Designation	Weight
Alarm buttons	AT11W	388900	Alarm button	0.100kg
	AT12W	388913	Alarm button	0.085kg
	FAT7	293781	Alarm button	0.015kg
Accessories	UPR7	185475	Recess box for AT12W *	0.140kg
Spare parts	-	419824	Replacement paper disc for AT11W, AT12W (10 pieces)	-
	-	256650	Replacement paper disc for FAT7	-
	-	307143	Incandescent lamp 12V/0.5W	-
	-	307156	Incandescent lamp 24V/0.7W	-

* or standard trade recess box