



# Access control

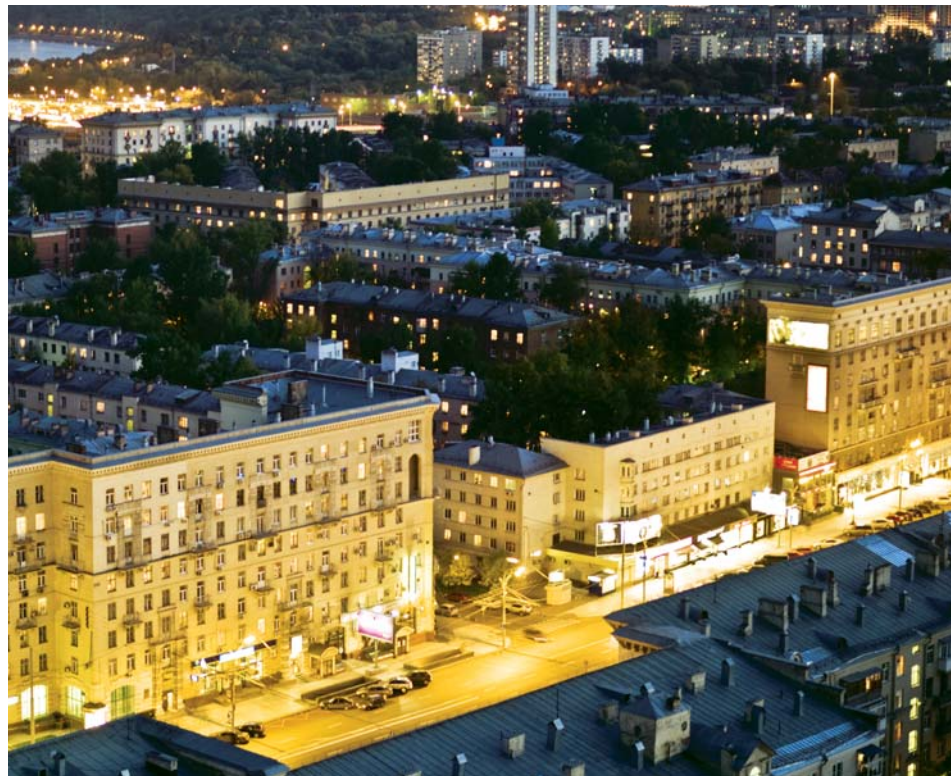
## SiPass Door Entry Phones

The smart way to manage visitor access



Answers for infrastructure.

**SIEMENS**



## SiPass Door Entry Phones – efficient access for visitors, employees, and tenants

To lock your main entrance is a pretty routine demand for companies and residential complexes. But at the same time you still want to comfortably let visitors, employees, and tenants have access. The easiest and most effective solution is to invest in a modern door entry phone system. SiPass® Door Entry Phones are composed of two systems: Bewatel and Bewacom, together they meet the demands that you have. Bewatel is the small system for up to four connection points and Bewacom connects directly to a company's internal telephone system (PABX).

All SiPass Door Entry Phones are designed to withstand harsh environments. They are robust in their design, with cast metal casing, and push buttons in stainless steel. If you prefer to have the door entry phone flush-mounted, just complement with our flush mounting kit. The keypad has lighting, an advantage in low-lit entrances and dark stairwells.

Commercial & office



# SiPass Door Entry Phones – convenient, cost-efficient and easy to install

■ SiPass Door Entry Phones simplify the lives of building owners, managers, employees, tenants, and visitors by making it very easy for visitors to place a call to someone inside the building and be granted access via the push of a button.

■ Organizations that already have an access control system installed will find that SiPass Door Entry Phones are the perfect complement to an access control system, since they quickly and easily overcome the challenge of managing access for non-cardholders.

■ **Application examples:**

- Residential entrances
- Office building entrances
- Warehouses
- Delivery bays
- Parking garages

■ Organizations that do not have an access control system installed will find that SiPass Door Entry Phones both manage visitor access and tenant/employee access in an efficient way via the integrated codelock function.

■ The SiPass Door Entry Phones portfolio includes two systems: Bewatel and Bewacom. SiPass® Bewatel is ideal for small organizations with up to four telephone extensions. Larger companies that have their own internal telephone switch (PABX) will find the SiPass® Bewacom to be a very smart and cost-efficient system.

## Highlights

- Robust and reliable
- Fast and easy installation
- Easy to use and maintain
- Integrated codelock
- Convenient and cost-efficient
- Can connect to video surveillance
- Perfect complement to an access control system

buildings



Loading bays and storage areas



Residential buildings





# Bewatel – door entry phones for smaller businesses and residential buildings

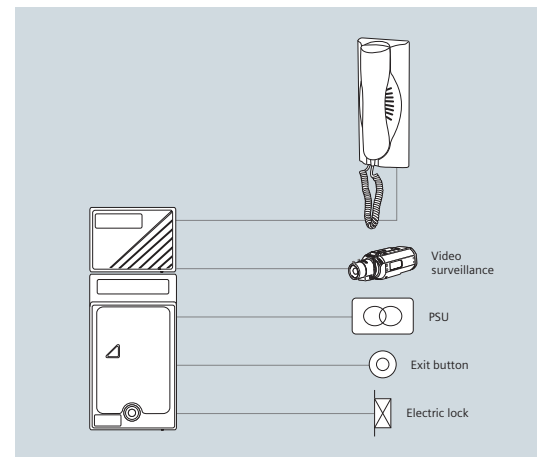
Bewatel is a perfect system for smaller companies or residential complexes. At every office or apartment a phone handset is placed where you can easily answer and open the main entrance door to let a visitor in – or leave the main entrance locked.

Bewatel works with 1 to 4 connection points. There are three different models available with or without a codelock. Bewatel can of course also be complemented with a separate codelock and/or a card reader. Choose the BT41 with one call button, BT44 with four call buttons, or BTK41 with one call button and an

integrated codelock. The built-in codelock can have up to 30 different codes (twenty 4-digit codes and ten 6-digit codes). Some or all of these codes can be set so that they are only valid during certain times of the day or week (when connected to an external timer). With the codelock you can easily provide access to employees/tenants, while keeping unwanted people securely out.

Additionally all Bewatel models include a tamper switch for extra security, and an output to a video surveillance system which can trigger recording when a visitor pushes a call button.

SiPass Bewatel



BT41



BT44



BTK41



V801





# Bewacom – door entry phones for companies with their own PABX

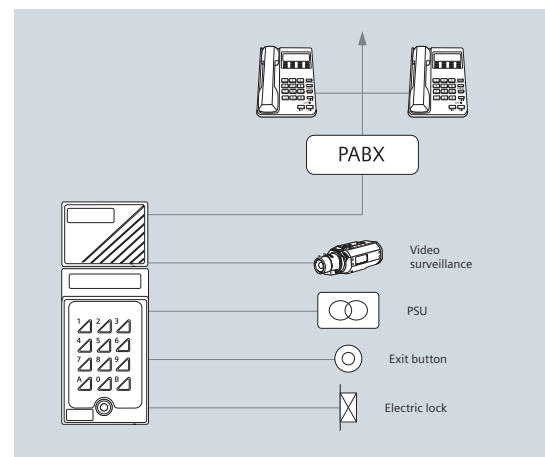
The Bewacom door entry phone works via the companies' PABX (Private Automatic Branch eXchange) internal phone system, and is connected as an extension. Not only does this allow for an efficient installation, it also offers more functionality.

A big advantage is that when the reception is closed, visitors can still call all phones that are connected to the PABX. The employees can then communicate directly with the visitor and open the main entrance from their regular office phone. Bewacom also has a built-in codelock with

up to four 4-digit codes, whereof two can be time-controlled (when using an external timer). With the codelock you can easily provide access to employees, while keeping unwanted people securely out.

Additionally all Bewacom models include a tamper switch for extra security, and an output to a video surveillance system which can trigger recording when a visitor pushes a call button.

SiPass Bewacom



BM31



BM3



# Accessories

Quality accessories to complement and enhance the SiPass Door Entry Phone range.

## NTFlex nameplate



The nameplate is made of rugged metal and unbreakable glass. It is available in gold or silver color. It is intended for use with complete laser printed sheets. The package includes a disc with ready-made templates in MS Word for 12, 21 or 30 rows.

## NTFlex profile



This metal profile has 16 rows designed for 13 mm text strips for contact name and number information. The package includes a disc with ready-made templates in MS Word and 20 sheets of paper.



Additional paper can be ordered separately. The package includes a disc with ready-made templates in MS Word and 20 sheets of paper for use with the NTFlex profile.

## Rain cover



The rain cover offers protection from the natural elements and is recommended with outdoor installations. The cover has pre-cut holes for cabling and mounting.

## Flush mounting kit



The flush mounting kit provides an unobtrusive and aesthetically pleasing installation. It has pre-cut holes for installation and mounting. Not shown in the picture is the cover piece which fits externally and aligns against the sides of the product.

## The SK5 security unit



The SK5 security unit is mounted indoors away from the door entry phone. If the unit's tamper switch is triggered then the SK5 cuts all power to the lock and activates the alarm output. The SK5 is designed for use with all SiPass Door Entry Phones products that have a tamper switch. It includes a buzzer with a reset button and an alarm output.



Technical information SiPass Door Entry Phone	Definition/ Details	SiPass Bewatel	SiPass Bewacom
<b>Basics</b>			
Number of doors		1	1
Number of users		Up to 4	Unlimited (PABX)
Number of codes	4-digit codes	20	4
Number of codes	6-digit codes	10	n/a
Time control codes	External timer, number of inputs/time channels	2	2
Door opening time		1-99 sec	1-99 sec
Calling time			1-99 sec
Exit request input		Yes	Yes
Tamper protected	Tamper output	Yes	Yes
<b>Architecture</b>			
Interface		5-wire cable to handsets	Two-wire analog to PABX
<b>Additional features</b>			
Possible to call to the door entry phone unit		Yes	Yes
"Hotline" function	Direct call to certain numbers	n/a	Yes
<b>Interoperability</b>			
Video surveillance integration	Output for video control	Yes	Yes

# Welcome to the world of innovative thinking

## ■ Innovation

For the last 160 years, Siemens has been investing a great deal in both manpower and research and development. This has ensured a constant stream of new insights, technologies and inventions that enable us to continuously improve the reliability of our products and systems to make them easier to install and operate.

Advances in digital technologies are creating a whole new world of possibilities. Siemens has been at the leading edge of progress in this field and continues to redefine both current and future technologies.

## ■ Interoperability

Interoperable systems are now supplied alongside such basic requirements as lighting, heating and water in a building. As a company, we know that integration supports the business environment through the interaction of products and systems. We break down the barriers between our access control, intrusion detection and video surveillance product lines in our security portfolio and listen to what the market actually wants. We then develop to deliver both fully integrated and interoperable security systems, based on our 30 years of know-how in security.



Siemens Switzerland Ltd  
Building Technologies Division  
International Headquarters  
Gubelstrasse 22  
6301 Zug  
Switzerland  
Tel +41 41 724 24 24  
Fax +41 41 724 35 22

Siemens Building Technologies  
A Division of Siemens Ltd (Australia)  
885 Mountain Hwy  
Bayswater, VIC, 3153  
Australia  
Tel +61 3 9721 2000  
Fax +61 3 9720 9966

Siemens Limited  
Building Technologies  
Units 1006-10  
10/F, China Resources Building  
26 Harbour Road  
Wanchai  
Hong Kong  
Tel +852 2870 7888  
Fax +852 2407 4457

Siemens Pte Limited  
Building Technologies  
The Siemens Center  
60 MacPherson Road  
348615  
Singapore  
Tel +65 6490 6000  
Fax +65 6490 6001

Siemens Building Technologies  
Security Products Limited  
Brecon House  
Llantarnam Park  
Cwmbran  
NP44 3AB  
United Kingdom  
Tel +44 871 386 0800  
Fax +44 871 386 0888

The information in this document contains general descriptions of technical options available, which do not always have to be present in individual cases. The required features should therefore be specified in each individual case at the time of closing the contract.

Subject to change • Order no. A6V10209447 •  
© Siemens Switzerland Ltd • Printed in Switzerland • 10805 Ah