

## CerPass - card readers

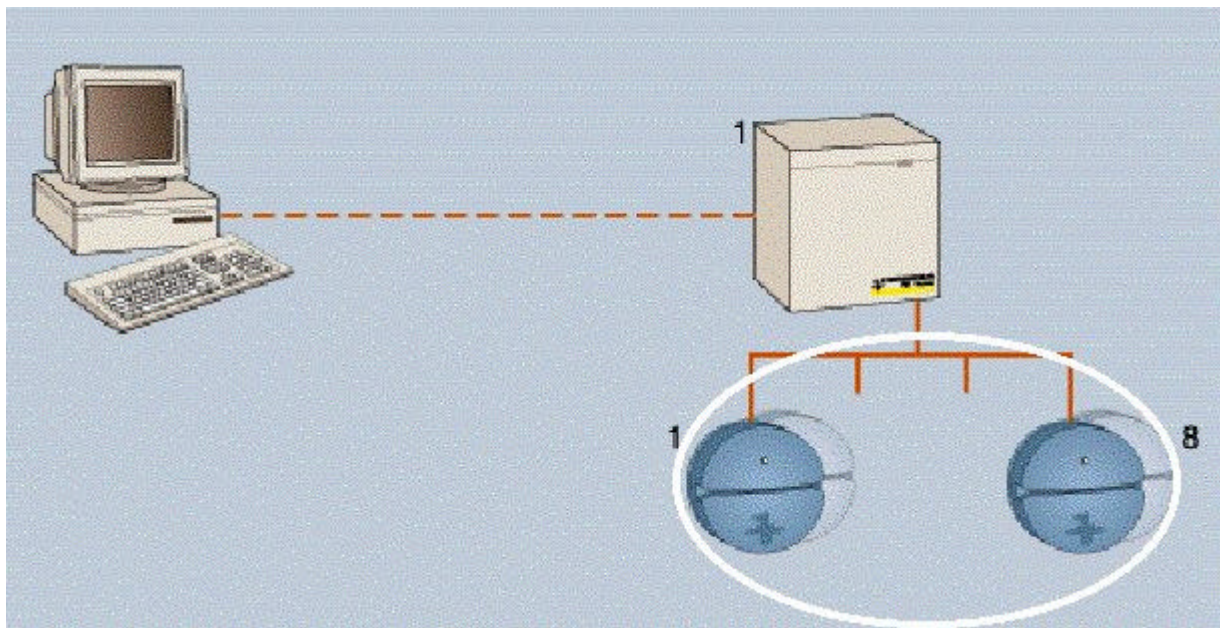
- for proximity cards (cards and key tags)
- for magnetic card as swipe or insert readers
- with or without PIN keypad



## CerPass-card readers

### Application

The CerPass readers are the interface between the access control system and the user. They read the card number stored on the card and sends it to the CC30XX door control unit, which makes the identification and decides whether to grant access. With any attempt to remove the read head, a tamper alarm is created. For higher security requirements, readers with PIN keypads are available. The power supply to the reader is normally provided through a two-wire cable with earth protection centrally from the door control unit. Local power supply is possible.



## Key features of the readers

### Operator-friendly

- Function display with a multicolour LED
- Acoustic signalling through buzzer

### Secure

- all card readers are monitored for tamper
- a special key is required to open them

## Design and construction of the readers

### Mechanical design:

The readers consist of:

- a basic module with electronics
- reader cover (various colours)
- accessories (e.g. heating, weather hood, additional base)

Depending on the card technology used, there is a difference between:

- Proximity Readers
- Magstripe insert readers
- Magstripe swipe readers

### Options

- additional PIN code keypads for higher security requirements
- Heating and protected cases for external use

## Advantages of the readers




- Proximity Readers:
  - simple and can be used without special handling instructions
  - reading is frictionless (so that the lifetime is longer)
  - there is no need for a card insert slot, so that there is better protection against manipulation and tampering
  
- Magstripe swipe readers:
  - can also read ABA coded badges
  - the badges can be swiped from both left and right
  - cheap badges

## Technical data\*

Proximity card reader	Type DA3022 Reading distance 20cm DA3023 Reading distance 12cm with PIN DA3020 Initialisation reader CC3011 Single door control unit 5cm
Type of reader	Proximity
Magstripe card reader	Type DA3001 Swipe readers DA3002 Insertion readers DA3003 Swipe readers with PIN DA3004 Insertion readers with PIN DA3000 Initialisation reader
Lifetime of magnetic head	min. 300.000 reads
Read direction	from left or right
Operating voltage	8.5 ... 15Vdc (normal 12Vdc)
Operating current: Proximity readers Readers	a maximum of 200 mA a maximum of 115 mA
Data cable to the door control unit	Standard interface RS485 a maximum of 1000m; twisted pair cable, shield recommended
State display	three-colour LED
State message	Buzzer
Monitoring of	faults, tamper and events
Messages of programmable events	e.g. Door open too long, Access not granted
Reader relays	Switch contact, non-voltage, a maximum of 0,8A / 24Vdc
Dimensions: Diameter (without PIN) Dimensions with PIN Height swipe/proximity Height magnetic insert reader Built in magstripe insert reader	150mm about 160 x 169mm 53mm 49mm diameter 60mm, insertion depth 66mm
Environmental conditions: Operating temperature Protection category according to IEC529	-10°... +55°C IP32
Colours: Basic module	RAL9005 (black)
Read cover	RAL7021 (black-grey) RAL5010 (blue)

\* The technical data relate to readers of the series DA30xx. The data for the reader CC3011 can be found in the description of CerPass500 in Section 3 of the Access Sales Manual Part II.

## Ordering details

	Order No.	Article
		<b>Proximity Chipcard reader</b>
	GBQ:506 397 GBQ:506 452 alternatively: GBQ:506 465	DA3022 Prox-reader; reading dist. 20cm Basic module DAZ3021 Reader cover Proximity blue  DAZ3022 Reader cover Proximity dark grey....
	GBQ:506 407 GBQ:506 452 alternatively: GBQ:506 465	DA3023 Prox-reader reading dist.12cm PIN Basic module DAZ3021 Reader cover Proximity blue  DAZ3022 Reader cover Proximity dark grey
	GBQ:491 554	DA3020 Proximity-Initialisation reader blue
	GBQ:506 504	CC3011 One door controller, Proximity
		<b>Magstipe readers</b>
	GBQ:506 300 GBQ:506 410 alternatively: GBQ:506 423	DA3001 Swipe readers Basic module DAZ3001 Reader cover Swipe blue  DAZ3002 Reader cover Swipe dark grey
	GBQ:506 313 GBQ:506 436 alternatively GBQ:506 449	DA3002 Insertion readers Basic module DAZ3011 Reader cover Insert blue  DAZ3012 Reader cover Insert dark grey
	GBQ:506 326 GBQ:506 410 alternatively: GBQ:506 423	DA3003 Swipe readers with PIN Basic module DAZ3001 Reader cover Swipe blue  DAZ3002 Reader cover Swipe dark grey
	GBQ:506 339 GBQ:506 436 alternatively GBQ:506 449	DA3004 Insertion readers with PIN Basic module DAZ3011 Reader cover Insert blue  DAZ3012 Reader cover Insert dark grey

	GBQ:491 538	DA3000 Initialisation reader Swipe blue
		<b>Accessories:</b>
	GBQ:506 478	DAZ3041 socket SP-inst.
	GBQ:506 481	DAZ3042 socket surface inst.
	GBQ:506 505	Assembly plate for one door controller CC3011
	GBQ:506 931	DAZ3100 Reader heating without PIN
	GBQ:515 935	DAZ3101 Reader heating with PIN
	GBQ:507 134	DAZ3150 Weather protection for insert and prox. readers
	GBQ:497 626	DZ3001 Magnetic card Hico Cerberus
	GBQ:507 008	DZ3002 Magnetic card Hico, blank
	GBQ:497 642	DZ3021 Proximity Chipcard ISO Cerberus
	GBQ:507 024	DZ3022 Proximity Chipcard ISO, blank
	GBQ:507 121	DZ3024 Proximity key tag
	GBQ:491 376	DAZ3000 reader tool
		<b>Spare parts:</b>
	GBQ:515 948	DAZ3116 cable clamp 4 pole, Mod. 5,0 (5 units)
	GBQ:515 951	DAZ3117 cable clamp 6 pole, Mod. 5,0 (5 units)
	GBQ:507 053	DAZ3110 safety screw
	GBQ:524 667	CCZ3012 Replacement front screen for CC3011