



## ASE5300-CB, ASE5300-CW CCTV (Closed Circuit Television)

SiPass®  
integrated

- Integration of CCTV functionalities within SiPass
- Configuration and control of CCTV operations from SiPass
- Display of the CCTV images directly from SiPass

Access control and CCTV –combination of systems, which not only belong together but also should be integrated in one system

SiPass CCTV offers an interface to a number of CCTV systems. The settings and configurations for cameras and monitors are directly made from SiPass system.

The image sequences are displayed from the SiPass GUI. Using the event control function camera sequences can be programmed, which are then started automatically with a specific system event.

This optional module allows you to upgrade your SiPass client to a CCTV station.

## Features

---



- Zoom (In / Out), Focus (Near / Far), Iris (Open / Close), Pan Tilt Speed
- Live image on-screen
- Ability to record, save and play presets and patterns directly from the SiPass GUI
- Define monitors, cameras and auxiliaries
- View specific CCTV images in response to system alarms and other status changes
- Configurable event task routines that generate CCTV activity
- CCTV actions directly from graphic maps

## Description

---

With the vast array of security applications available in the marketplace today, it makes sense to integrate these applications into one access control and security environment. The SiPass CCTV HLI (High Level Interface) was developed to seamlessly integrate CCTV operation within the SiPass access control and security solution.

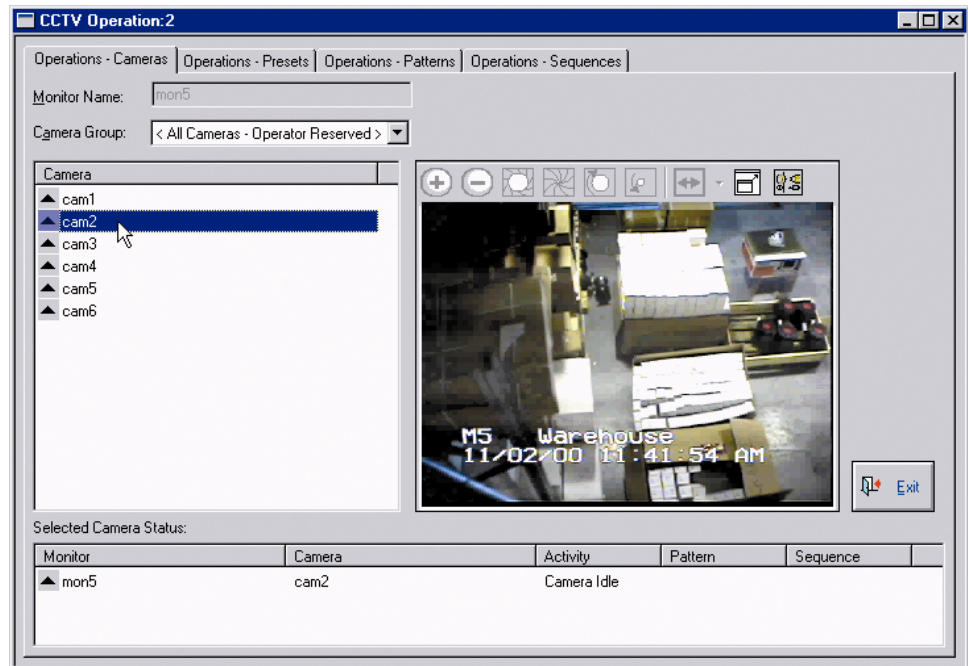
The SiPass CCTV HLI allows you to interface with a wide range of CCTV systems to transform your standard SiPass client into an interactive CCTV Station. This enables you to control the operation of CCTV components from the convenience of the SiPass GUI (Graphical User Interface).

Through the use of a Video Capture Card, you can display high quality CCTV images directly from the SiPass GUI. You can also switch camera images to different monitors, create and view presets, patterns and sequences. When used in conjunction with SiPass's advanced alarm handling mechanism, you can display presets, patterns, or sequences on any monitor when the security at your facility has been breached.

Using the database partitioning in SiPass, you can govern exactly which operators can use the CCTV functions and the level of control they have over each CCTV device.

To ensure that every facility using the CCTV HLI runs efficiently as possible, CCTV actions can be run directly from graphic maps.

## Specification



CCTV GUI

Supported Matrix Switchers:

SiPass supports the following systems:

- Pacom 2030
- Pelco 9760
- Pelco 9740
- Pelco CM6700
- Pelco CM6800

Note: Live images using the SiPass GUI are dependent upon a Windows compatible Video Capture Card being installed.

## System Requirements

---

One of the following core packages is required:

Type	Part no	Designation
ASL5000-SE	6FL7820-8AA10	SiPass Standard Edition
ASL5000-OA	6FL7820-8AA20	SiPass Optima

Also required is the following option:

Type	Part no	Designation
ASE5300-CB	6FL7820-8AE19	SiPass CCTV Matrix Switcher interface

## Details for ordering

---

Type	Part no	Designation
ASE5300-CW	6FL7820-8AE01	SiPass CCTV capability on a workstation

Issued by  
Siemens Building Technologies  
Fire & Security Products GmbH & Co. oHG  
D-76187 Karlsruhe

[www.sbt.siemens.com](http://www.sbt.siemens.com)

© 2004 Copyright by  
Siemens Building Technologies AG  
Data and design subject to change without notice.  
Supply subject to availability.

Printed in the Federal Republic of Germany  
on environment-friendly chlorine-free paper.

---

Document no. **A24205-A335-B120**

Edition 07.2004