

ASE5300-CW

SiPass®
integrated

SIMATRIX CCTV Interface

- **Integration of SIMATRIX CCTV functionalities within SiPass**
- **Configuration and control of CCTV operations from SiPass**
- **Display of CCTV images directly from SiPass**

Access Control and CCTV – combination of systems, which not only belong together but also should be integrated in one system.

SiPass SIMATRIX CCTV offers an interface to the SIMATRIX CCTV systems. The settings and configurations for cameras and monitors are made directly from SiPass Graphical User Interface (GUI).

The image sequences are displayed from the SiPass GUI. Using the event control function camera sequences can be programmed, which are then started automatically with a specific system event.

This integrated module allows you to upgrade your SiPass client to a CCTV station.

Features



- Zoom (In / Out), Focus (Near / Far), Iris (Open / Close), Pan Tilt Speed
- Live image on-screen
- Ability to record, save and play presets and patterns directly from the SiPass GUI
- Define monitors, cameras and auxiliaries
- View specific CCTV images in response to system alarms and other status changes
- Configurable event task routines that generate CCTV activity
- CCTV actions directly from graphic maps

Description

The SiPass SIMARTIX CCTV interface was developed to seamlessly integrate SIMATRIX CCTV operation within the SiPass access control and security solution.

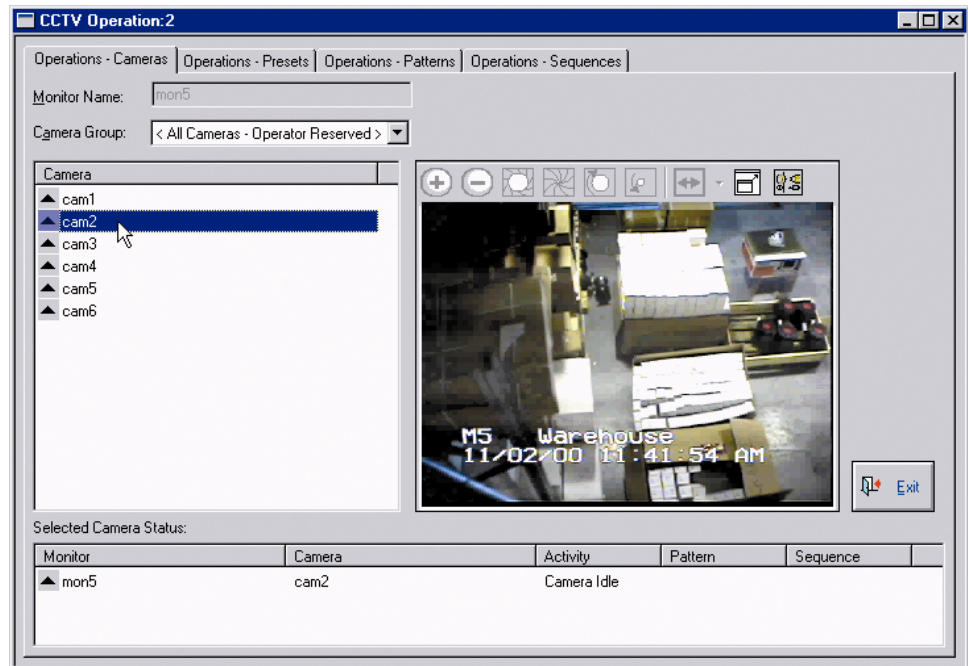
The SiPass SIMATRIX CCTV interface allows you to interface with SIMATRIX CCTV systems to transform your standard SiPass client into an interactive CCTV Station. This enables you to control the operation of CCTV components from the convenience of the SiPass GUI (Graphical User Interface).

Through the use of a Video Capture Card, you can display high quality CCTV images directly from the SiPass GUI. You can also switch camera images to different monitors, create and view presets, patterns and sequences. When used in conjunction with SiPass's advanced alarm handling mechanism, you can display presets, patterns, or sequences on any monitor when the security at your facility has been breached.

Using the database partitioning in SiPass, you can govern exactly which operators can use the CCTV functions and the level of control they have over each CCTV device.

To ensure that every facility using the CCTV runs efficiently as possible, CCTV actions can be run directly from graphic maps.

Specification



CCTV GUI

Supported Siemens Matrix Switchers:

- **SIMATRIX 164**
- **SIMATRIX 648**
- **SIMATRIX SYS**

Note: Live images using the SiPass GUI are dependent upon a Windows compatible Video Capture Card being installed.

System Requirements

One of the following core packages is required:

Type	Part no	Designation
ASL5000-SE	6FL7820-8AA10	SiPass Standard Edition ¹
ASL5000-OA	6FL7820-8AA20	SiPass Optima ¹

The interface, which enables the connection of Siemens SIMATRIX matrix switcher, is standard of the SiPass above mentioned core packages.

Details for ordering

Type	Part no	Designation
ASE5300-CW	6FL7820-8AE01	SiPass CCTV capability on a workstation ¹ Fehler! Textmarke nicht definiert.

¹ Requires SiPass MP2.1