



V3i Matrix

Uniclass L7626	EPIC M231
CI/SfB (64.11)	X

The Single Box Solution



V3i - The Single Box Solution



...all the quality and performance of big modular systems with all the simplicity of an off-the-shelf switcher



Town and City Centres



Retail & Commercial Buildings



Airports and Mass Transit



Public places & Buildings / Leisure Areas



Chemical and Petrochemical



High Security Buildings



Asset Surveillance



Crime Control

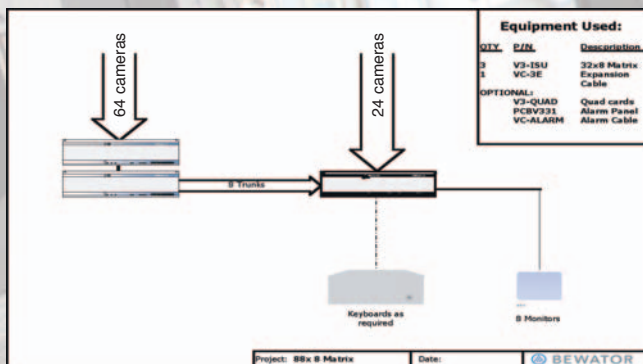


Public Security

The all-in-one matrix solution

V3i is a versatile building-block switcher with 32 inputs and 8 outputs: an installer can supply a single V3i for a small monitoring room, fully working out of the box; or, using a single expansion cable, quickly connect two V3i units together to form a full 64 by 16 matrix.

Multiple Integrated System Units (ISU) nodes can be interconnected using video trunks to form either larger networked systems or a larger video matrix. For example, by connecting five 64x16 ISU nodes together, a 256x16 full cross-point matrix can be created, with great savings on cabling costs compared with a single central matrix.



Detector activated CCTV (BS8418)

Up to 128 events can be programmed to take place on any day of the week, and at any time. Thus alarms can be disabled or enabled, e.g to allow fire exits to be used during the working day, or cameras can start to tour during the morning but return to home position at noon.

The system will automatically carry out these operations without the operator having to remember to do them manually. Other facilities include relay activation, video sequence operation, and alarm block enable / disable.

IP connectivity

V3i offers a smooth transition from the traditional analogue switching matrix to the digital products. Its IP connectivity allows V3i to be connected to an IP network (LAN/WAN) and allows remote control and image viewing over the network.

These unique features guarantee the product a longer life span than that of a traditional matrix and make integration with other products (from Bewator or 3rd party) easier.

3rd Party control

With comprehensive communication capabilities like configurable serial ports, V3i can control many 3rd party domes, pan-tilt heads, DVRs, VCRs, multiplexers and be controlled by 3rd party equipment. This makes systems expansions, upgrades or integration with 3rd party equipment seamless.

Supported domes:

Surcha Mini Dome, Kalatel CyberDome, Vista PowerDome, JVC TK-C675, Ultrak KD6, Dennard 2050, VCL Orbiter/Microsphere

Supported DVRs:

Dedicated Micros Digital Sprite, Columbus Triplex

Supported VCRs:

Panasonic AG-6730, Sony SVT-100P or Sanyo TLS-S8000P

Supported Multiplexers:

Panasonic WJ-FS616, Montage, Tecton Drax

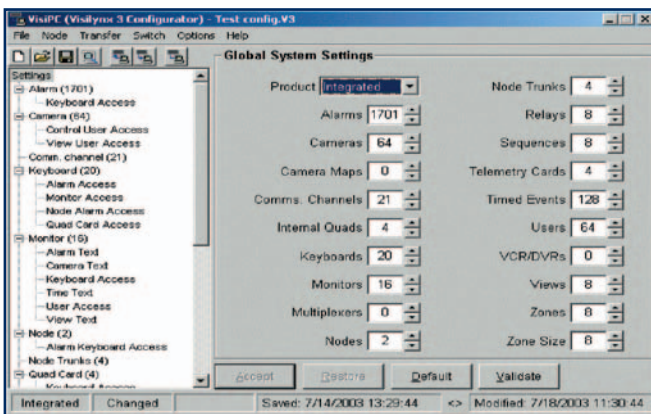
From 1 standard component

Each V3i unit features:

- 32 loop-through camera or dome inputs (PAL or NTSC)
- 8 monitor outputs
- C and D Telemetry control inputs
- Video Loss detection on all inputs + covered camera detection

- On-screen configurable text
- 128 alarm inputs (NC or NO)
- 4 programmable relay outputs
- 6 Software configurable serial ports
- Field replaceable PSU
- 2 internal expansion slots for optional quad cards

Easy Set up via VisiPC



A PC-based configuration program allows you to

- Customise V3i's personality,
- Carry out comprehensive self-tests
- Install software upgrades on site
- Install new screen display fonts on site.

The configuration can be saved and stored anywhere (disk, network, CD, etc), so that when keyboards get damaged or replaced, the installer or end-user do not have to entirely re-program the configuration. They can just download the previously saved version and the system is back up and running in no time.

Selectable by text description

V3i allows keyboard selection of cameras, views and zones from menus of text descriptions, allowing rapid selection without the need to remember numbers.

Presets

V3i supports up to 99 preset positions per camera with compatible telemetry receivers. Preset sequence and preset tour are both provided to give powerful camera patrol capabilities.

Views

Building on Visilynx 2's popular feature, V3i allows a combination of camera and preset position to be remembered as a 'view'. These can then be given text descriptions allowing them to be selected from a menu without the need to remember the camera or preset number. Up to 255 views can be programmed for display and selection from a menu. Views are presented in blocks of 8 on the keyboard enabling rapid selection of camera/preset combinations

Zones

Groups of up to eight cameras or views can be combined into zones and this zone can be given a text description. Thus, by selecting a zone called 'car park' from a menu, all the cameras covering the car park can be displayed in one operation, with cameras moving to preset views if required. Up to 255 zones can be programmed for display and selection from a menu. Zones are presented in blocks of 8 on the keyboard, and the system allows the zones to be presented in the order most appropriate to the way the system is used ie most frequently used zones first, with less common ones being presented in subsequent menus

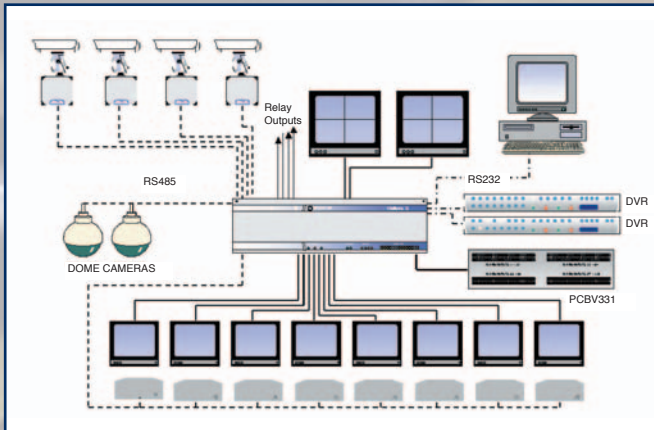
Video Sequences

Up to 64 video sequences can be programmed from the keyboard. Each sequence can contain up to 63 camera pictures with individually adjustable dwell time. A sequence can also include preset positions, and for DC pan-&-tilt units, the speed that the camera moves to this position can also be programmed. Thus creating a very powerful 'site tour' facility whereby cameras can automatically follow, in real time, actions such as cash runs, guard patrols etc., as they take place. The 'hold', 'stop' and 'reverse' facilities further enhance the system's flexibility.

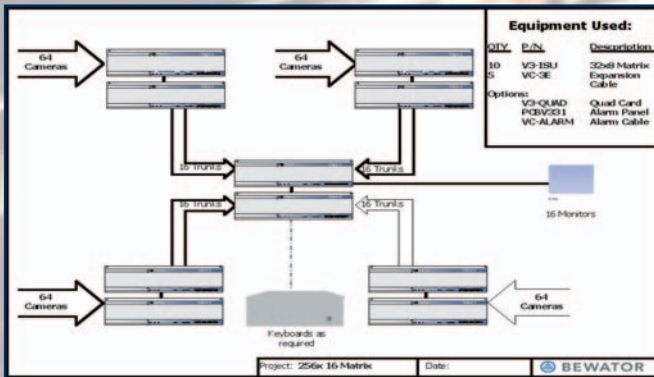


...To modular and distributed systems

Straightforward system integration



Cost-effective large or multi-site systems



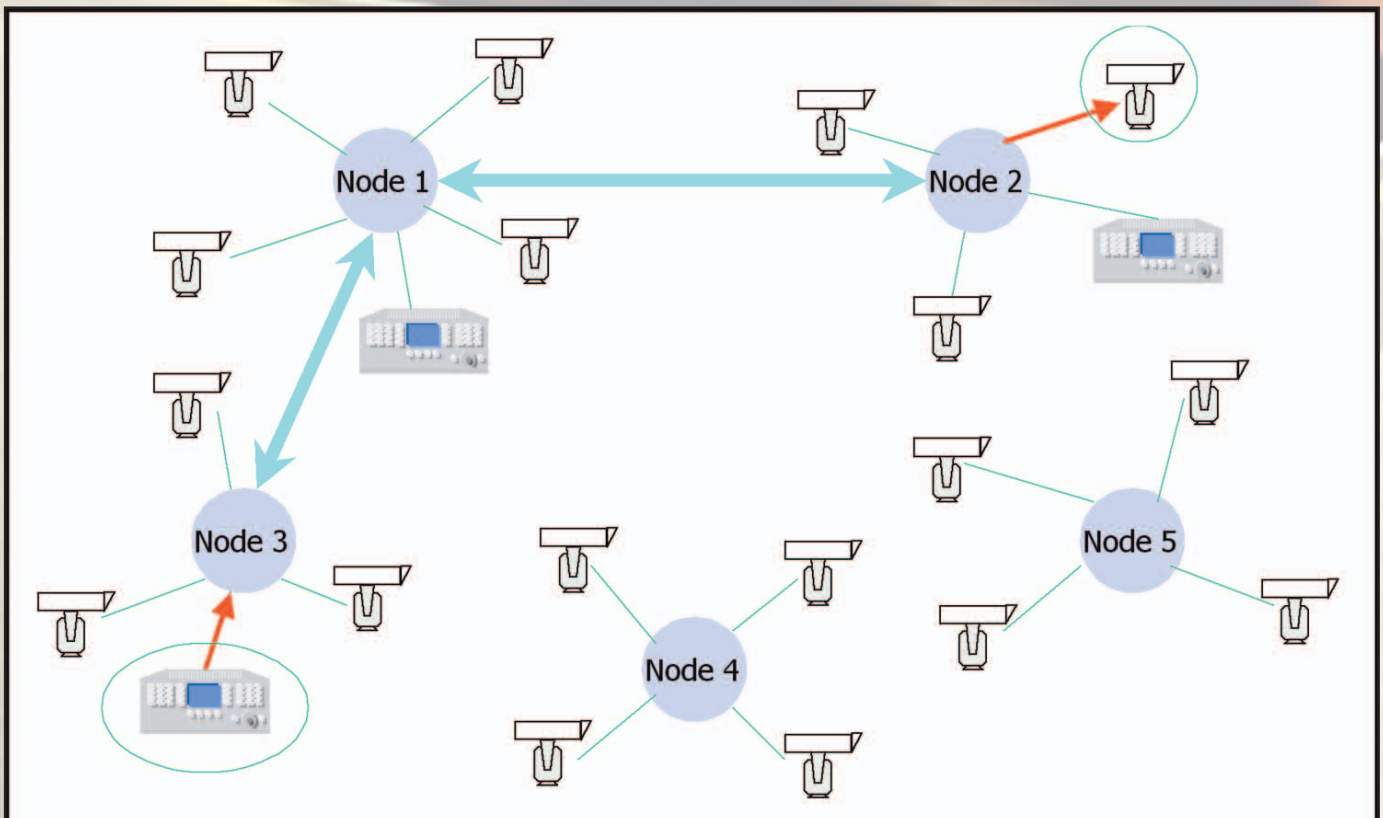
Visiwire network architecture

V3i's Visiwire™ network architecture allows two or more single-unit or double-unit V3i 'nodes' to be connected in a variety of different ways. Gone are the days of central control rooms with all that expensive cabling routed to one central location. For installations where the full power of a digital IP system is not required, V3i provides an economical answer.

V3i nodes are connected together using one or more video 'trunk' cables and one data cable. That's it. The data is passed in simple full-duplex serial format, allowing most data cabling from modems to twisted pair to fibre data channels to be used. The connection technology was deliberately kept simple to maximise the choice of video/data transport systems.

But the flexibility doesn't stop there. Remote switching nodes can indeed be connected to a central monitoring node, but with greatly reduced cabling compared with a fully-wired system; or they can be connected in series with no central station; or an any combination.

With appropriate interconnections, any node can view cameras from any other node, or respond to remote alarms, or control remote VCRs or DVRs. The closest analogy is with telephone exchanges: video is routed from a camera node through any intervening nodes to the controlling node, much as telephone calls are routed. In each case, the user only needs to know the camera name or number – as easy as dialling a phone. The Visiwire™ network takes care of the details.



Putting you in control at all times

User friendly functional LCD display

Camera selection by name **64 sequences up to 63 cameras**

Monitor selection by name

255 separate views

Control of local Quads

255 separate zones **Variable speed control**

V3i Operational Features

'Soft keys' assume control function, according to the current system status and mode of operation

Large status display and user control menus allow selection of function by name rather than number

Selection of camera, view and zone by name: no need to remember numbers. To select the car park camera, just press the button labeled 'car park'

Lens control and most commonly used telemetry functions have dedicated keys

Programme key to restrict unauthorised reprogramming

Numeric keypad allows conventional selection of camera, monitor and pre-sets

Unique trackball. Variable speed pan/tilt control, with zoom operation buttons adjacent for single-handed operation

On screen help facility to guide operators when first using the system

Matrix systems selection guide

		V3-ISU V3i unit	V-K Keyboard
Loop-through	Camera or dome inputs (PAL or NTSC)	32	
Monitor outputs	With on-screen display	8	
Telemetry	Bewator dome, P&T and camera control	Over the Coax	
	Bewator and 3rd party dome, P&T and camera control	Twisted Pair	
Video loss detection		•	
Alarm inputs	Alarm contacts into V3-ISU	128	
	Remote alarms via duplex receivers	•	
Programmable relay outputs		4	
Configuration	Non-volatile configuration	•	•
Software configurable ports	RS485/422 (keyboards)	1	
	RS232 (test/configuration)	1	
	RS232 (modem/DVR/MUX/VCR/PC-CON)	1	
	RS422/232 (DVR/MUX/VCR/PC-CON or networking V3i ISUs together)	3	
Preset support (per camera)		99	
Preset sequence		•	
Preset tour		•	
Expansion Capability	Maximum node size (using 2 V3-ISU)	64x16	
	Maximum number of ISU's in system	254	
Quad card		option (up to 2 per ISU)	
Configuration and Fault diagnosis software	VisiPC Windows software on CD-ROM	•	
Numeric keypad	Conventional selection of camera/presets		•
Selection of cameras	By name or number		•
Views	Named combination of a camera and preset		255
Dedicated keys	For key functions		•
Programme key	Unauthorised reprogramming restriction		•
PIN code	Unauthorised operation restriction		•
Video Sequences	Up to 63 camera pictures / presets per sequence		64
Warranty		5 years*	5 years* <small>*Extended Warranty. Conditions apply</small>

For systems requirements outside V3i capabilities, please contact Bewator for advice.

Accessories

V3-QUAD	Visilynx 3 quad card. Provide a colour quad screen video output from the V3-ISU in composite and Y-C format with on-screen text. Up to 2 quad cards may be fitted into each ISU. (Covered by 5 years extended warranty*)
VC-3E	ISU expansion cable. Allows two ISU units to be linked forming a full cross-point switching 64x16 video matrix
V3-CONF	Configuration and fault diagnosis software for Visilynx 3i
PCBV331	Alarm panel (accepts 128 pairs of contacts)
VC-3K	Keyboard cable, 3m (between V3/V3i and keyboard)
VC-ALARM	Alarm cable between PCBV331 and V3-ISU
VC-PCCON	RS232 cable used for remotely controlling the system from a PC (using PC-CON protocol)
VC-3CONFIG	Configuration cable (between Visilynx 3/3i and PC)



Bewator Ltd, Albany Street, Newport, South Wales, UK. NP20 5XW
Tel: 01633 821000, Fax 01633 850893

www.bewator.co.uk • E-mail: sales@bewator.co.uk

