

Quick Start Guide

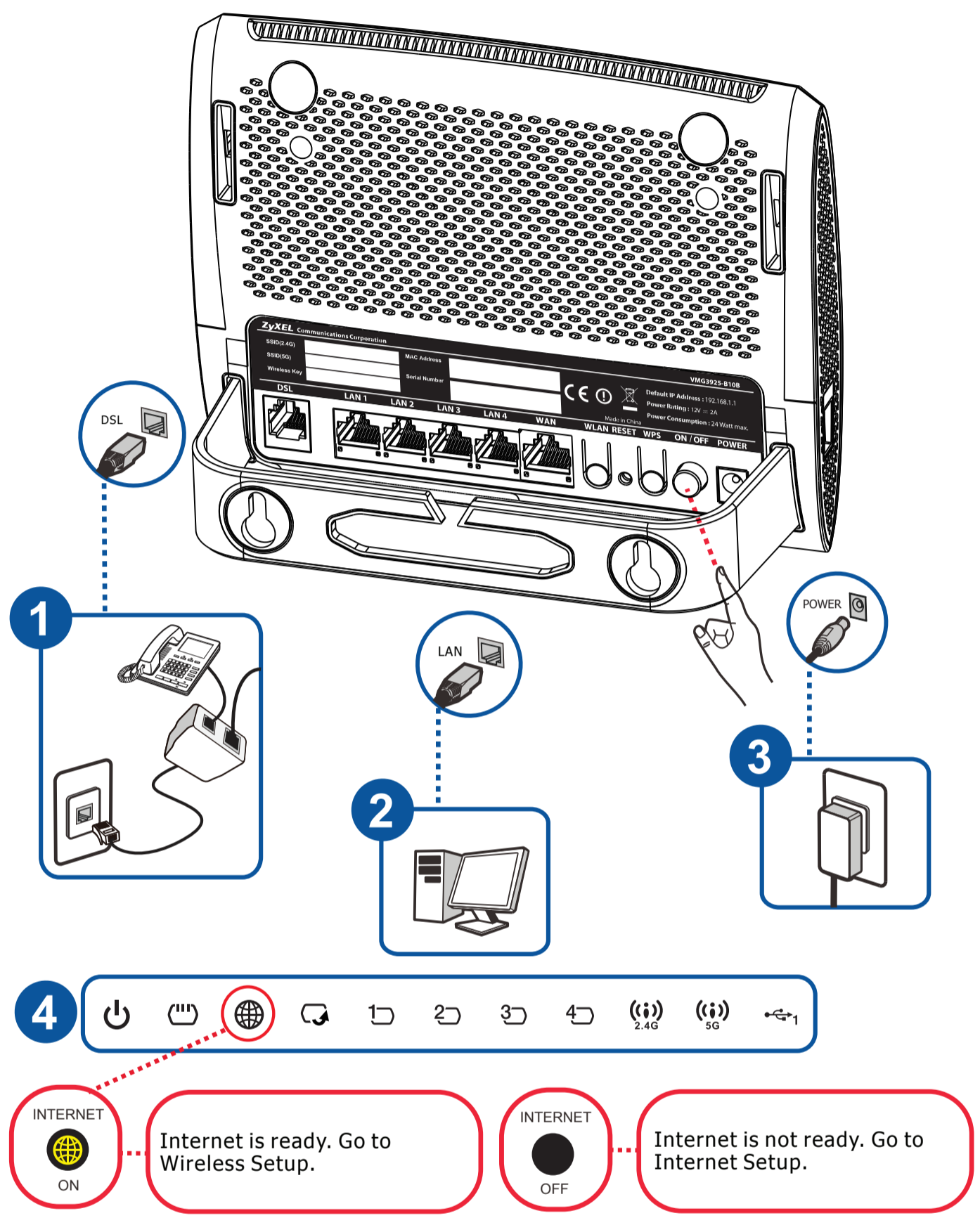
Hardware Connections

1 Connect DSL port to a DSL splitter using the gray telephone cable. Otherwise, connect WAN port to an existing modem or router.

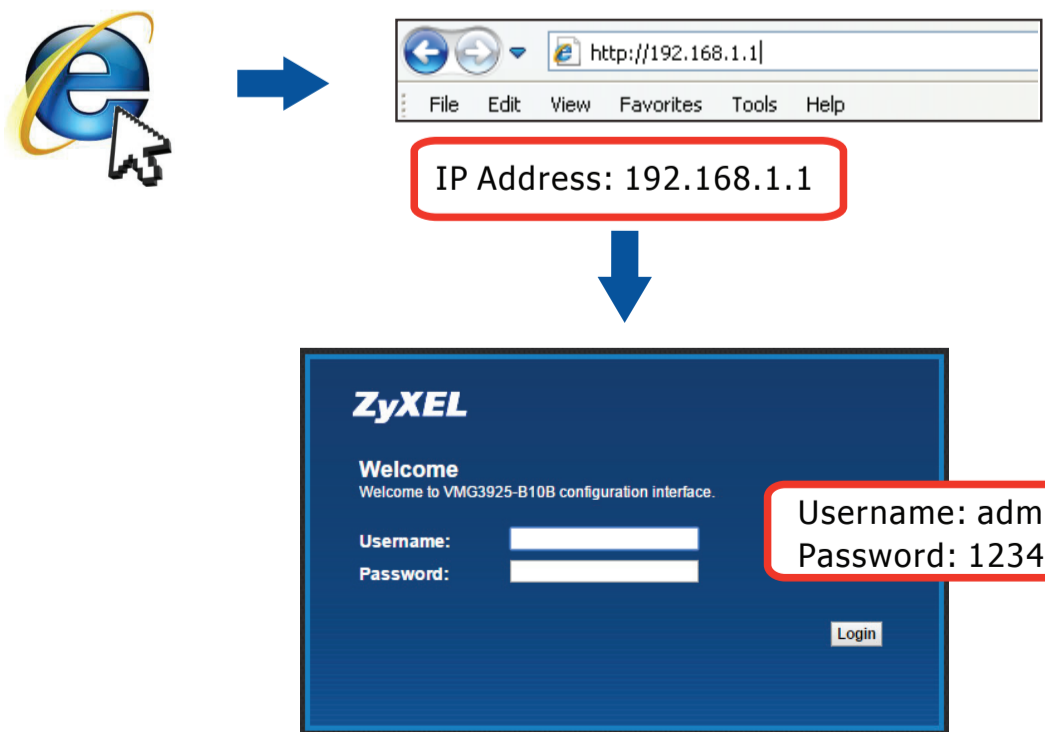
2 Connect computer using the yellow Ethernet cable.

3 Connect power and press the power button.

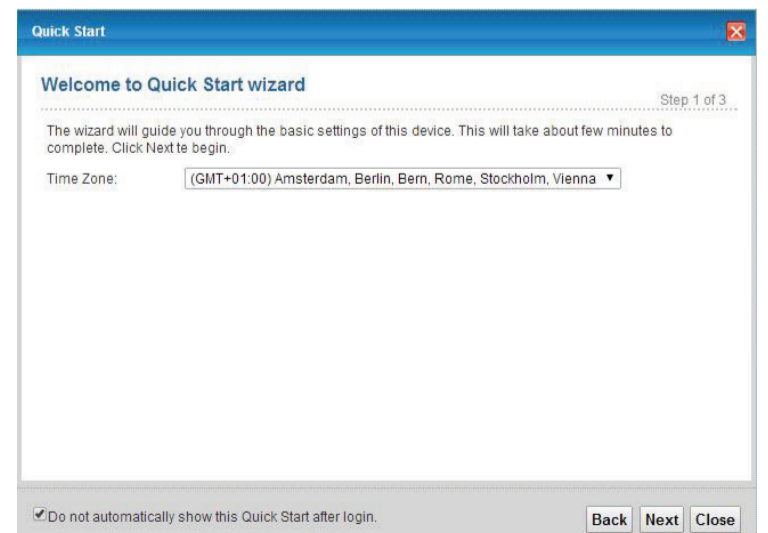
4 Check LEDs.



Internet Setup

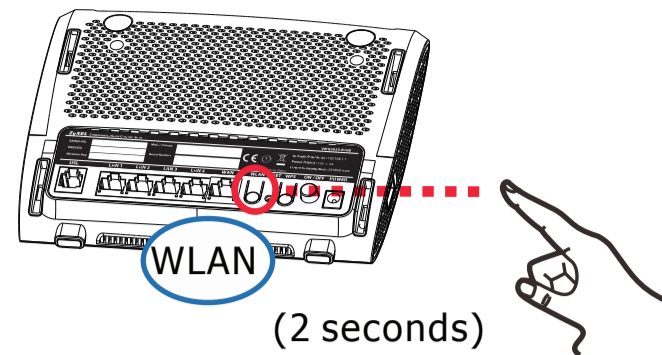


Quick Start



Wireless Setup

Check WLAN LED is on  If not, turn it on

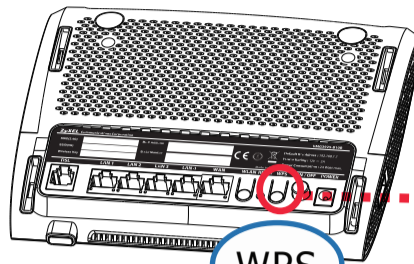


Secure Wi-Fi with WPS

1

Press the WPS button until the WLAN/WPS LED blinks orange.

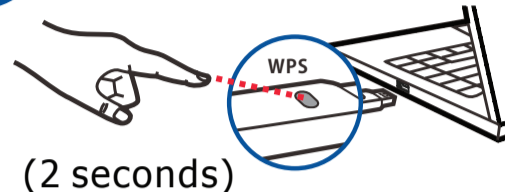
1



(2 seconds)
(Until...)



2



(2 seconds)



(Within 2 Minutes)

2

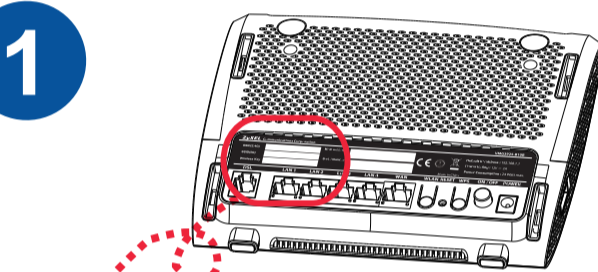
Press the WPS button on the client.

No WPS

1

The SSID and Wireless key are on the device sticker.

1



2



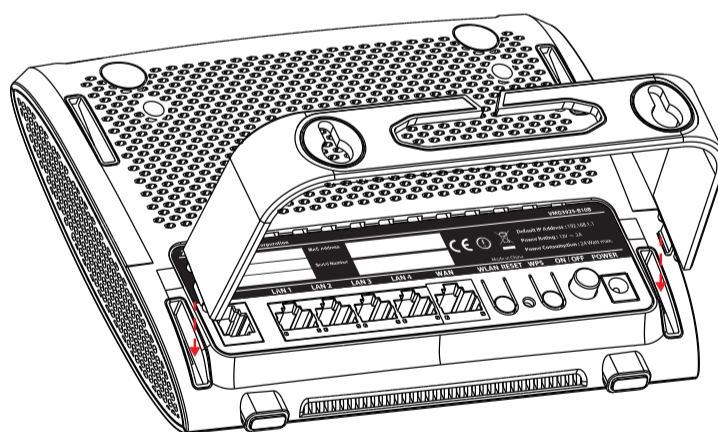
2

Find the device with this SSID. Enter Wireless key to connect.

Freestanding Installation

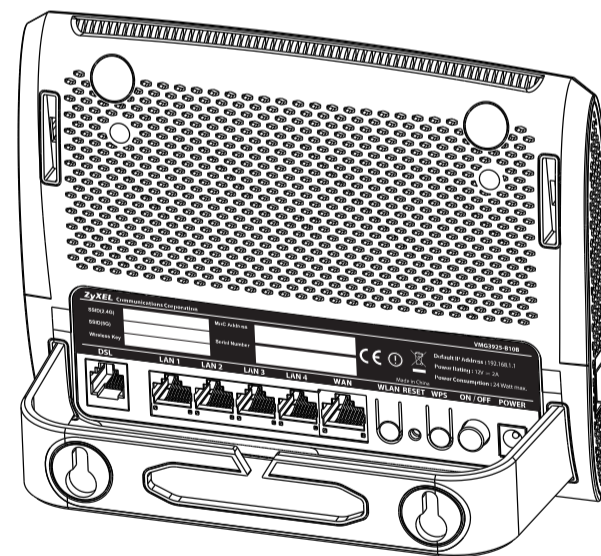
1

Connect the stand carefully as shown.



2

Place the device vertically on a smooth level surface.



Declarations

European Union - Disposal and Recycling Information

The symbol below means that according to local regulations your product and/or its battery shall be disposed of separately from domestic waste. If this product is end of life, take it to a recycling station designated by local authorities. At the time of disposal, the separate collection of your product and/or its battery will help save natural resources and ensure that the environment is sustainable development.



ZyXEL Declaration of Conformity	
We herewith declare that this declaration is issued under our sole responsibility.	
Product	: Dual Band Wireless AC/N Combo WAN Gigabit Gateway with USB
Model	: VMG3925-B108
MANUFACTURED BY AND TCF FILE LOCATED AT:	
Company	: ZyXEL Communications Corporation
Address	: 1. No. 2, Gongye E. 3th Road, Hsinchu Science Park, Hsinchu, Taiwan, R.O.C. 2.No. 6, Innovation Road 6, Hsinchu Science Park, Hsinchu, Taiwan, R.O.C. 3. Generstorvej 8D, 2860 Søborg, Denmark
complies with essential requirements of the following EU harmonization legislation and in conformity with the following presumption of conformity:	
Essential requirements	Presumption of conformity
Directive 2006/95/EC (LVD)	EN 60950-1:2006+A11:2009+A1:2010+A12:2011+A2:2013
Directive 2004/108/EC (EMC)	EN 55022:2010+AC:2011 EN 61000-3-2:2014 EN 61000-3-3:2013 EN 55024:2010 EN 301 488-1 V1.9.2 EN 301 488-2 V1.9.2.1
Directive 1999/5/EC (R&TE)	EN 300 328 V1.9.1 EN 301 893 V1.8.1
Directive 2011/65/EU (RoHS)	EN 50518:2012
Directive 2009/128/EC (ErP)	EN 50564:2011 EN 50563:2011
Recommendation 1999/519/EC (EMF)	EN 62311:2008 EN 50388:2002
ZyXEL Communications Corporation	
2015-10-14	
Date of issue	Richard Hsu / Senior Manager Quality Management Division