

RVi

IP-

RVi-IPC52DN20



:

,

:

,



,

/



(),

,

-

,

.

,

.

,

,

,

.

,

.

,

,

,

.

.

.

.

1.

2.

(-10°)

(50°)

3.

4.

5.

6.

,)

(;

7.

1.

1

	1/2.8" 2 MP progressive scan Exmor CMOS
	1920 1080
	f=4.7 ~ 94 (20 x zoom)
	55,4°-2,9°
/	>50
	1,8 /F1.6 (); 0,02 /F1,6 (/)
	H.264, MPEG4
	25 / (1920 1080)
()	: 0.1°~300°/ , : 0.1°~150°/
()	: 0.1°~400°/ , : 0.1°~300°/
	TCP/IP, HTTP, DDNS, DHCP, FTP, PPPoE, NTP, SMTP, ONVIF
WEB	Microsoft Internet Explorer 6
	SD/SDHC 32
	1.0Vp-p, 75
PTZ	RS485 Pelco-D, Pelco-P
/ .	7/2
	AC 24V/3A(±10%) 15W (), 50W ()
	IP67
	-40° - 60°
	Ø222 324
	5

2. ,

2 3

2

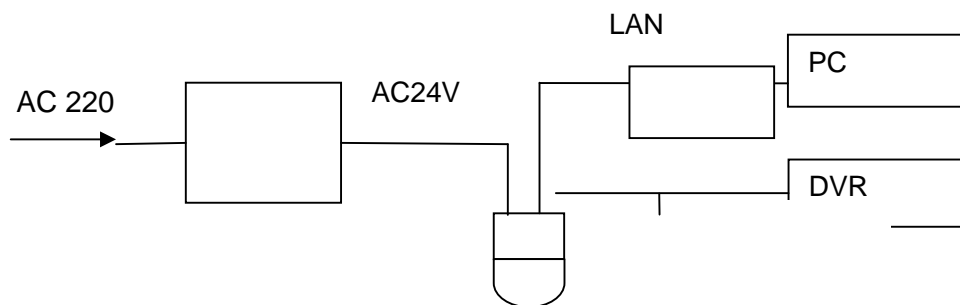
485	A	485 – A (+).
	B	485 – B (-).
	GND	
VIDEO	GND	
	OUT	
AC24V		AC 24V
EARTH		
LAN		RJ 45

3

: 1-2	<ul style="list-style-type: none"> • • • NO : • NC : 	
GND		
: 1-7	<ul style="list-style-type: none"> • • 	

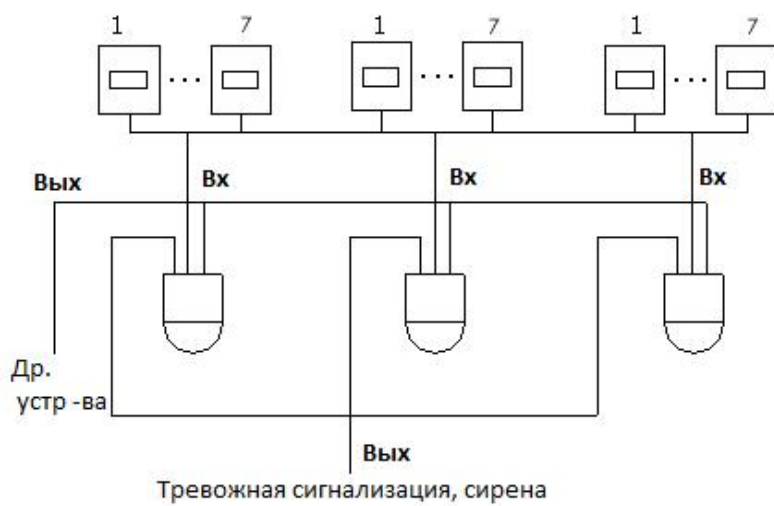
3.
3.1

. 1



. 3.1-1

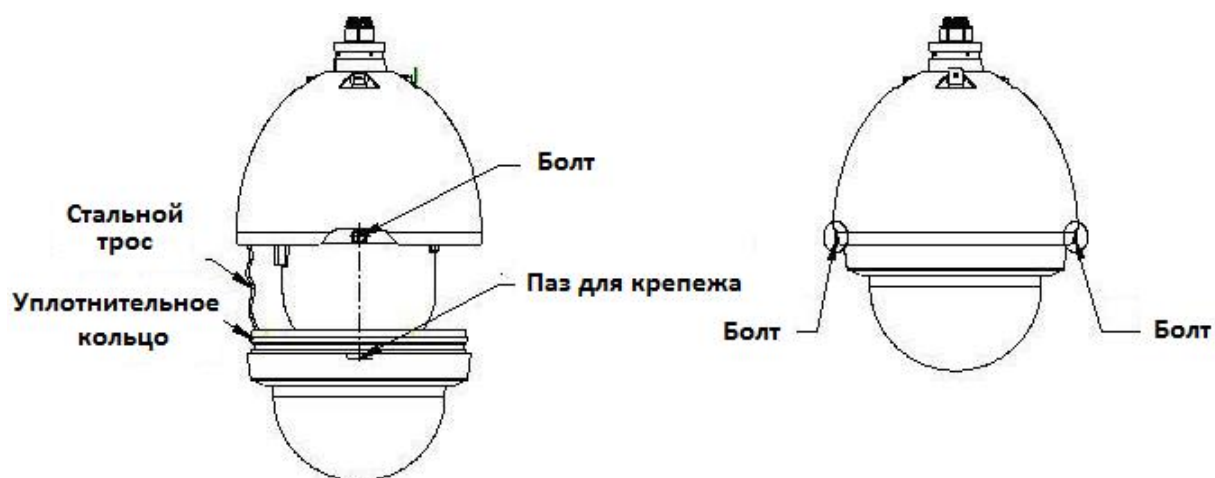
. 2



. 3.1-2

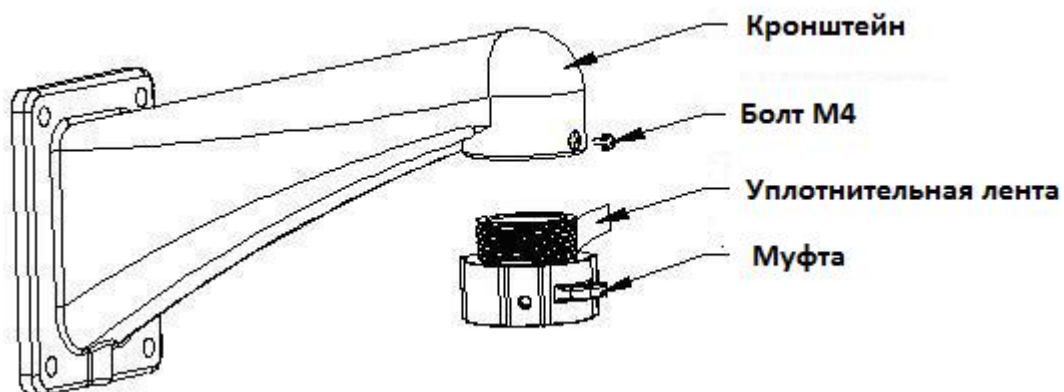
3.2

. 3.2-1



. 3.2-2

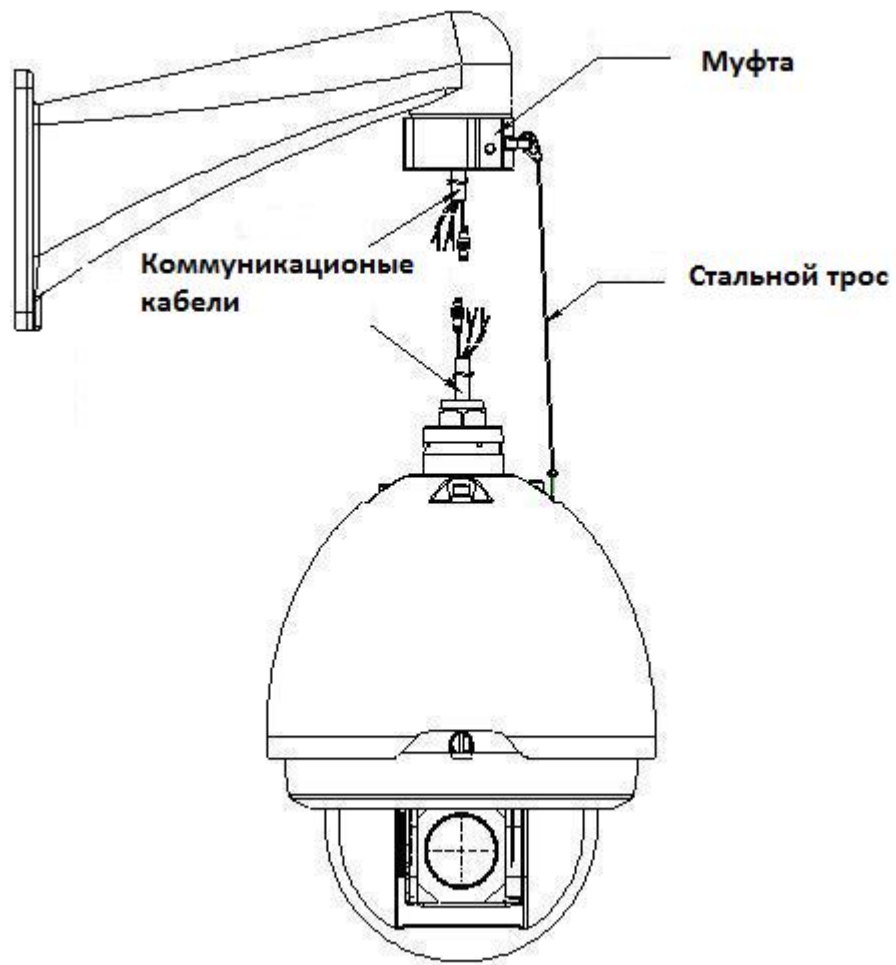
. 3.2-1



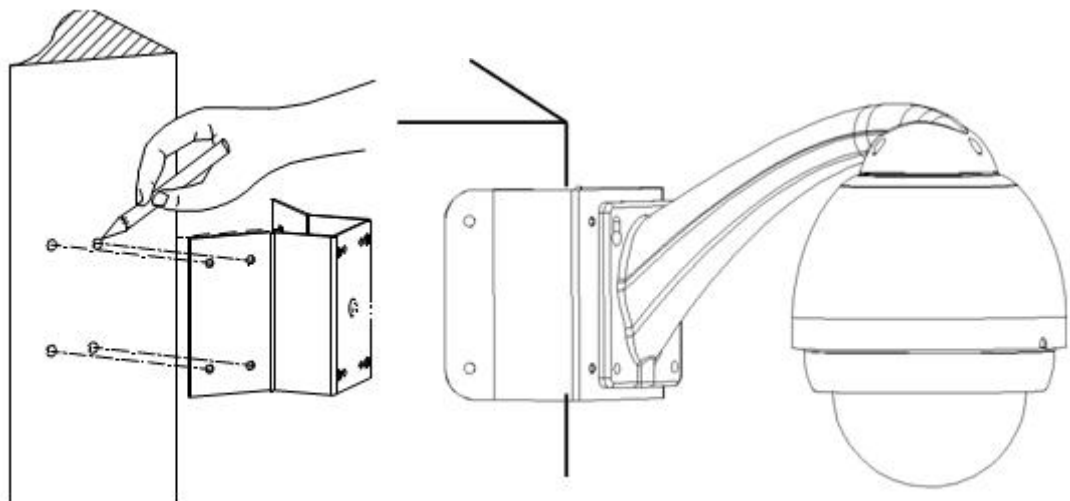
. 3.2-2

(. . . 3.2-3).

!



. 3.2-3

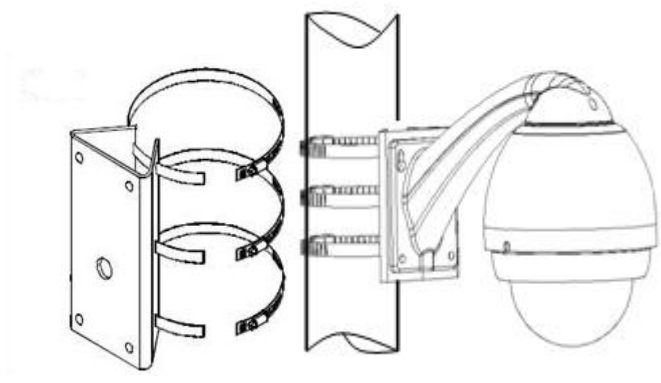


. 3.2-4

(. . 1.3-7).

•

(. . . 1.3-8).
: 59-82 ; 84-108 ; 103-127 ; 130-152 ;
155-178 ; 180-203 ; 194-216 .



. 3.2-5

4.

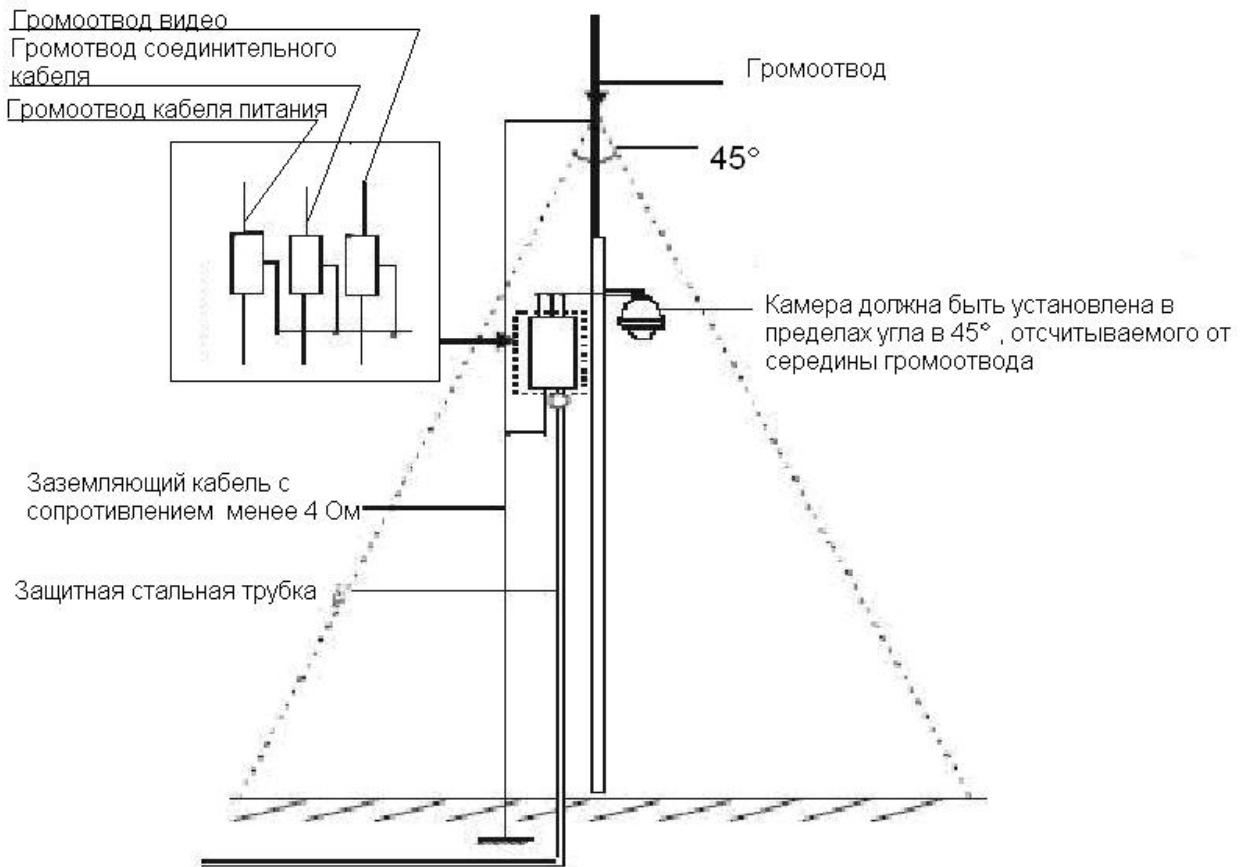
TVS.

4000 , . . .

50 .

()

. 4-1

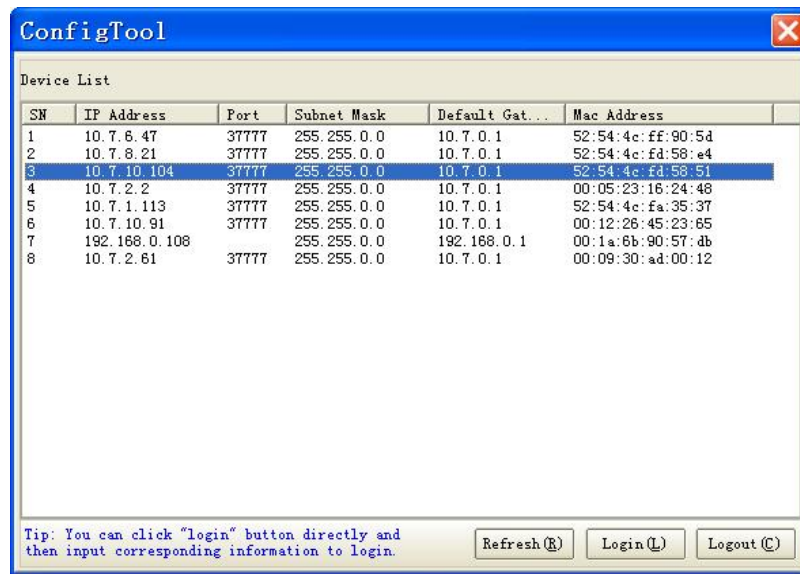


. 4-1

5.

IP : ConfigTool , IP , ConfigTool ,

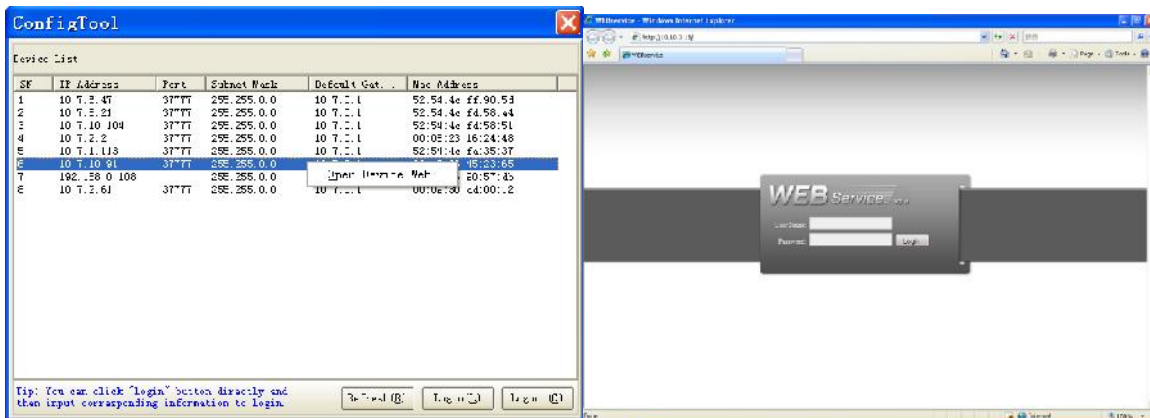
5-1 : IP , , , MAC .



. 5-1

3).

(. 5-



. 5-2

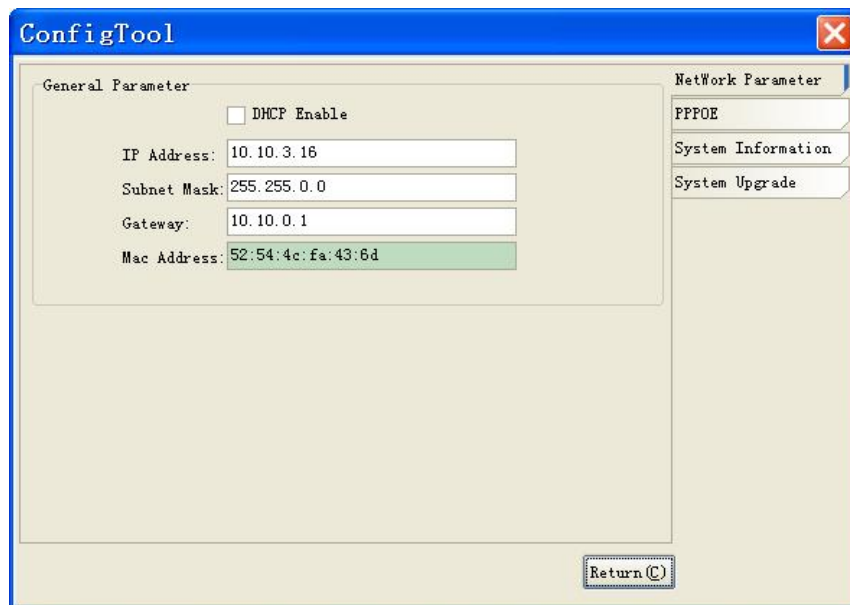
web-

(. 5-3)



. 5-3

(. . 5-4)



. 5-4

WEB

PSS,

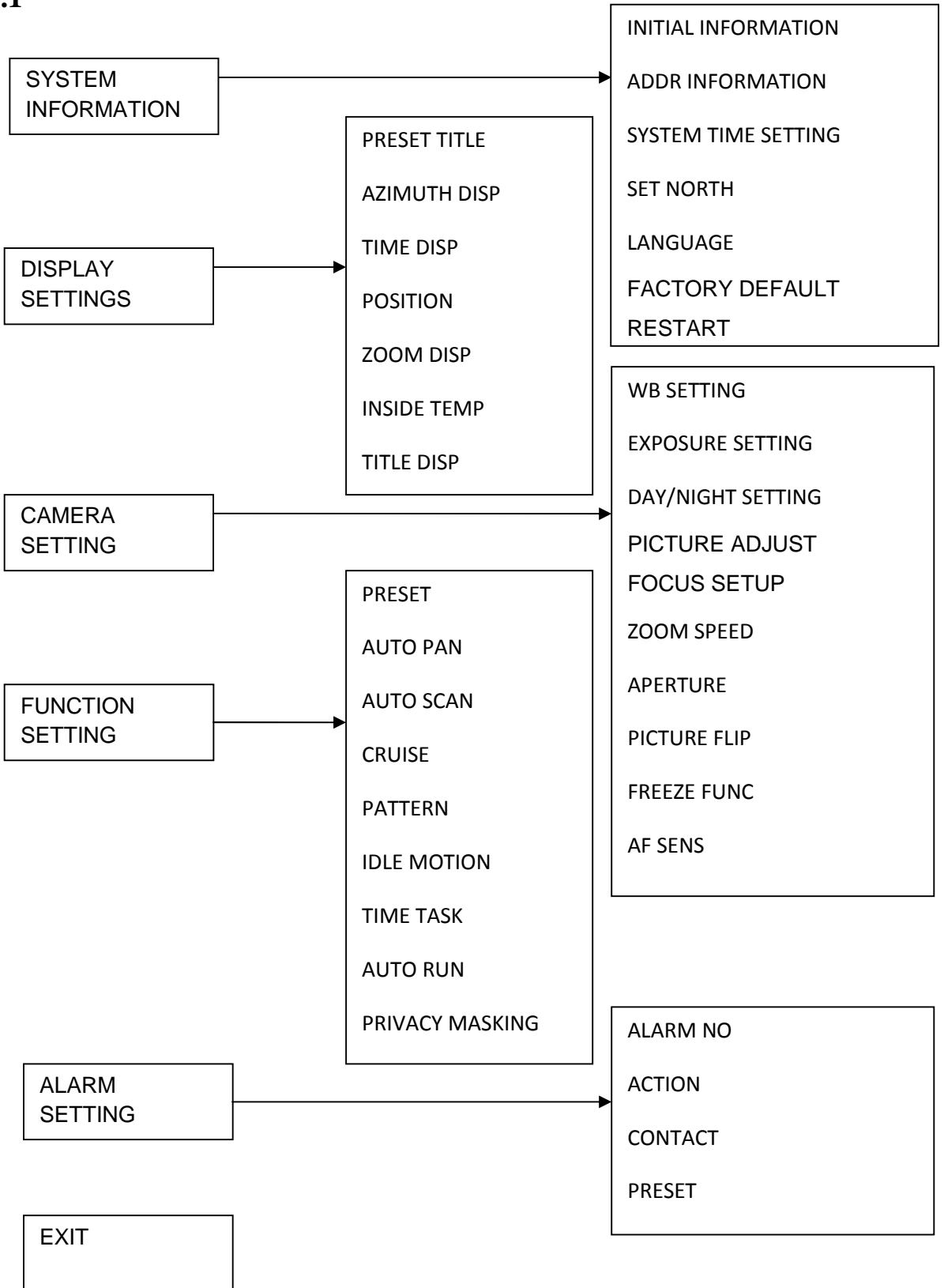
CD

<http://www.rvi->

cctv.ru/

6.

6.1



6.2 (System Information)

6.2.1 (Initial information)

:

- Addr ()
- Baud rate ()
- Parity ()
- Protocol ()
- Model ()
- Temp ()
- Software ()

6.2.2 (addr information)

- Addr type (): Hard ()/ Soft ()
- Addr-hard:
- Addr-soft:

6.2.3 (System time setting)

- Year ()
- Month()
- ()
- Week ()
- Hour ()
- Min (.)

6.2.4 (Set North)

6.2.5 (Language)

OSD .

6.2.6 C (Factory default)

6.2.7 (Restart)

6.3

6.3.1 Preset title ()

: /

6.3.2 Azimuth disp ()

: /

6.3.3 Time Disp ()

.

6.3.4 Position ()

. . 5.2.4.

6.3.5 Zoom disp ()

6.3.6 Inside temp ()

: ./ F/ C

6.3.7 Outside temp ()

: ./ F/ C

6.3.8 Outside T&H ()

: / F,% / C,%

6.3.9 Title Disp ()

6.4 (Camera setting)

6.4.1 WB setting ()

- (WB balance mode)
- R gain: 0 254
- B gain: 0 254

6.4.2 Exposure setting ()

- AE mode:
 1. Auto: (BLC, , WDR).
 2. Manual: (, , WDR)
 3. AV: (, WDR)
 4. TV: (, , WDR)
- Gain setting ()
- Shutter ():
- Iris setting (): 1(.) 18(.)
- Slow AE: .
- Exposure com: 1() 16(.)
- Slow shutter (): 1 15
- BLC:
- WDR: .

6.4.3 Day/Night

(/)

6.4.4. Focus mode ()

:

6.4.5 Focus limit ()

6.4.6 Zoom speed ()

1() 8(.)

6.4.7 Digital zoom ()

6.4.8 Aperture ()

1 () 32 ()

6.4.9 Picture flip ()

/

180

6.4.10 Freeze func ()

./

6.4.11 Camera factory default setting ()

6.4.12 Camera restart ()

6.5 (Function setting)

6.5.1 Preset ()

- Preset No:
- Title:
- Setting:
- Call:

.

/

/

«setting».

«OK»

Call.

6.5.2 Auto Pan ()

- Pan speed:
- Run:
- Stop:

6.5.3 Auto Scan ()

- Set left limit:
- Set right limit:
- Scan speed:
- Run:
- Stop:

6.5.4 Auto cruise ()

- Cruise No:
- Cruise setting:
- Delete cruise:
- Run:
- Stop:

1 8. Cruise setting

(5)

32

«Run».

«Stop».

6.5.5 Auto pattern ()

- Pattern No:
- Program start:
- Program stop:
- Run:
- Stop:

1 5.

« / »

/ /

».
« ».
« »

6.5.6 Idle Motion ()

- Idle func: ./
- Idle Time:
- Idle action:
- Preset No:
- Auto scan No:
- Cruise No:
- Pattern No:

6.5.7 Time task ()

- Task No:
- Time task: /
 1. Week:
 2. Start time:
 3. End time:
 4. Task action:
 5. Action No:
- Task setting:
- Task information:
- Delete task:

6.5.8 Privacy Masking ()

1 8.
«RESIZE»

«SAVE».

6.5.9 PTZ speed ()

1 (.)

5 (.)

6.5.10 Set zero ()

6.5.11 Power up ()

- Action ():
- Parameter:

6.5.12 Menu password (OSD)

OSD

6.5.13 Menu idle ()

6.5.14 PTZ Autostop (PTZ)

PTZ

6.6 Alarm setting ()

6.6.1 Alarm No ()

6.6.2 Action ()

6.6.3 Contact ()

:

6.6.4 Preset ()

6.6.5 Autoscan ()

6.6.6 Cruise ()

6.6.7 Relay out ()

- 1-5S 2-5S:

5

5

- 1&2-5S:

5

5

6.6.8 Reset delay ()

6.7 Exit ()

OSD